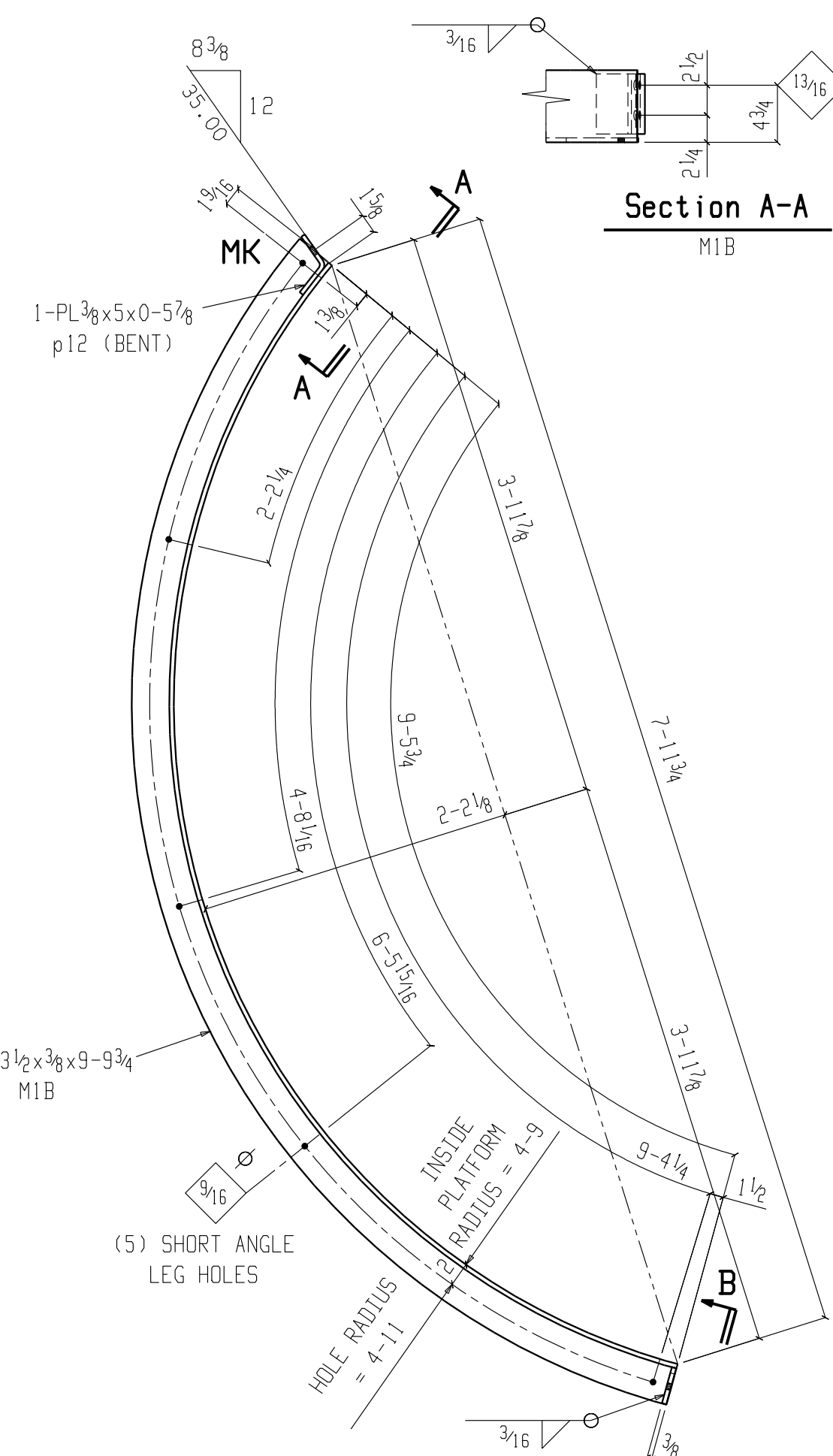
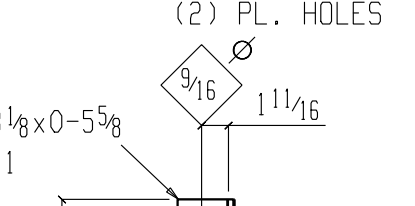


Section A-A
MIA

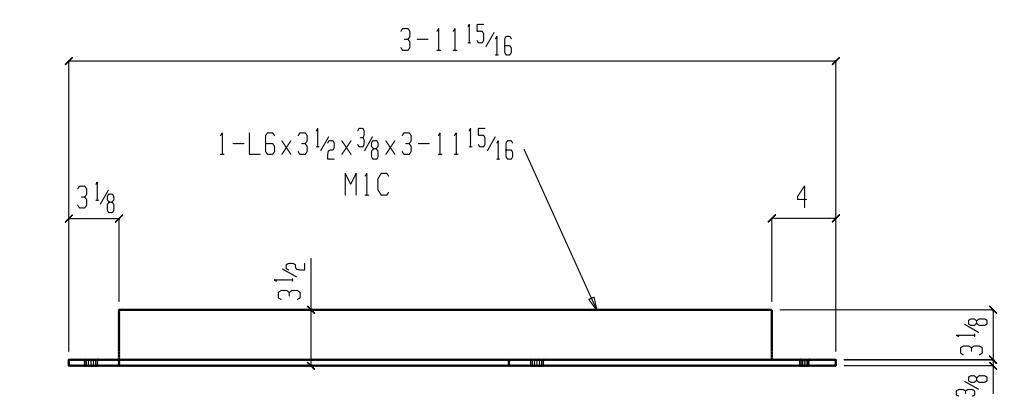


ONE INSIDE BASE ANGLE M1B

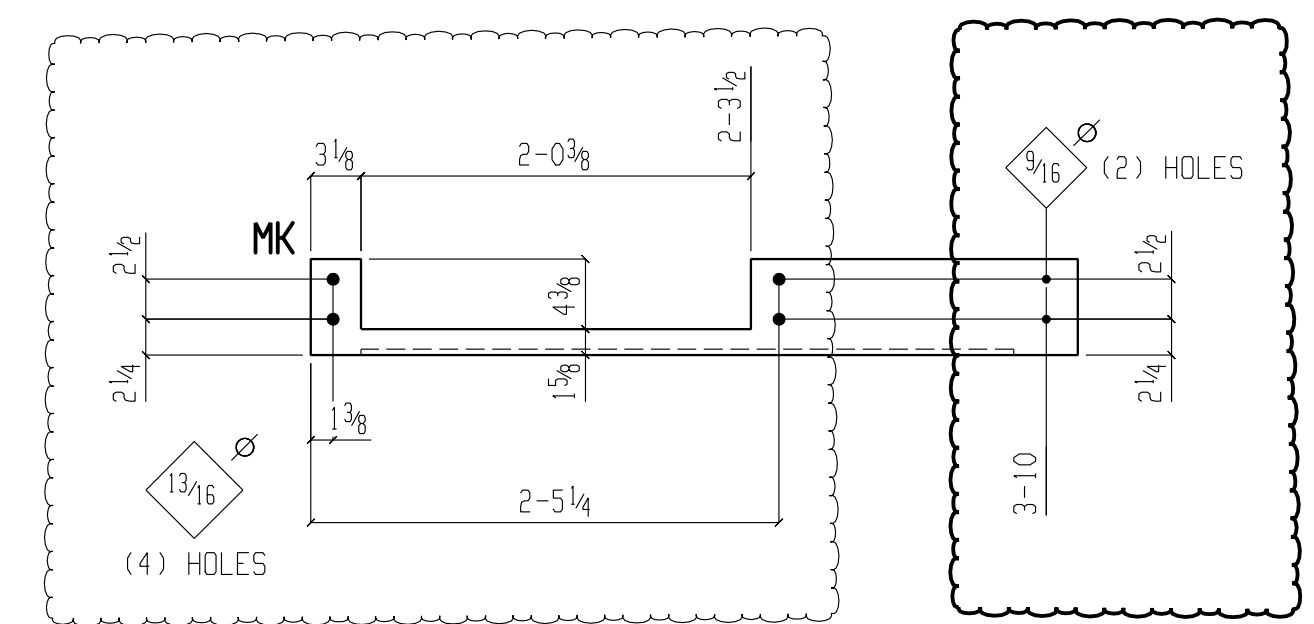
FIELD BOLTS:
4-1/2 x 2 A325 w/1BVL, 1HD WASH [total=4]



Section B-B
M1B



TOP VIEW
MIC



ONE CURB ANGLE M1C

FIELD BOLTS:
2-1/2 x 1 3/4 A325 w/1HD WASH [total=2]
2-3/4 x 2 A325 w/1HD WASH [total=2]
2-3/4 x 2 1/2 A325 w/2HD WASH [total=2]

ONE MIA	OUTSIDE BASE ANGLE			220	
1 MIA	L6 x 3 1/2 x 3/8	18	5 1/2	A36	216
1 p9	PL 3/8 x 3/4	0	5 5/8	A36	2
1 p1	PL 3/8 x 3/4	0	5 5/8	A36	2

FIELD BOLTS
5 1/2 Dia A325 0 2 1BVL, 1HD WASH

ONE M1B	INSIDE BASE ANGLE			120	
1 M1B	L6 x 3 1/2 x 3/8	9	9 3/4	A36	115
1 p12	PL 3/8 x 5	0	5 7/8	BENT A36	3
1 p1	PL 3/8 x 3/4	0	5 5/8	A36	2

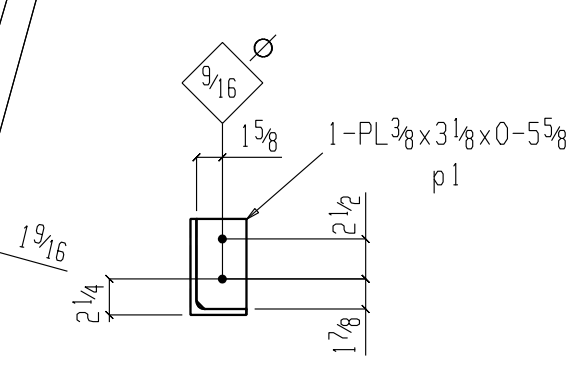
FIELD BOLTS
4 1/2 Dia A325 0 2 1BVL, 1HD WASH

ONE MIC	CURB ANGLE			47	
1 MIC	L6 x 3 1/2 x 3/8	3	11 5/16	A36	47

FIELD BOLTS
2 3/4 Dia A325 0 2 1/2 2HD WASH
2 3/4 Dia A325 0 2 1HD WASH
2 1/2 Dia A325 0 1 3/4 1HD WASH

ONE OUTSIDE BASE ANGLE M1A

FIELD BOLTS:
5-1/2 x 2 A325 w/1BVL, 1HD WASH [total=5]



Section B-B
M1A

GENERAL SHOP FABRICATION NOTES:

- ALL WIDE FLANGE MEMBERS ("W" SHAPES) SHALL BE ASTM A572 GRADE 50 (w/ SPECIAL REQUIREMENTS PER AISC TECHNICAL BULLETIN #3 DATED '89) OR ASTM A992 GRADE 50. Fy = 50 ksi.
- ALL STEEL PIPE TO BE ASTM A53 U.N.O.
- ALL STEEL PLATES, ANGLES, CHANNELS, BARS, ETC. TO BE ASTM A36, (Fy=36 KSI)
- ALL STRUCTURAL TUBE STEEL TO BE ASTM A500, GRADE B, (Fy=46 KSI), U.N.O.
- ALL HOLES TO BE 1/16" DIA., U.N.O.
- ALL WELDED CONNECTIONS TO BE ELECTRIC ARC WELDED w/ AWS SERIES E70 ELECTRODES.
- ALL BOLTED CONNECTIONS TO BE w/ ASTM A-325 H.S. BOLTS w/ HARD NUTS & WASHERS.
- ALL WELDS (SEAL WELDED) TO BE 1/8" LESS THAN MATERIAL THICKNESS U.N.O.
- ALL ADDITIVES (DOUBLE ARROWS) ARE REF. TO CUT END OF MEMBER OR TOP OF COL. BASE PL. U.N.O.
- PRIME & PAINT PER FABRICATORS STANDARD RUST INHIBITING RED PRIMER, LEAD FREE, UNLESS NOTED OTHERWISE.
- ERECTION PLAN PER SHEET E1.

DRAWING REVIEW / APPROVAL
NEW CENTURY ENGINEERING HAS MADE EVERY EFFORT TO CORRECTLY AND COMPLETELY INCORPORATE THE INTENT OF THE CONTRACT DOCUMENTS. APPROVAL BY THE CLIENTS REPRESENTATIVE SHALL CONSTITUTE ACCEPTANCE. ANY POST-APPROVAL CHANGES WILL BE CONSIDERED TO BE CONTRACT CHANGES.

 3106 E. VANTAGE PT. DR. MIDLAND, MICH. 48640 serskine@newcenturyeng.com	FOR: company name project name city, state	START DATE: REVISIONS NO. DATE	NCEC JOB NO. DWG. NO.
	TITLE: STRUCTURAL STEEL DETAILS project name xxxxx	DRAWN BY: CKD BY: DATE:	X