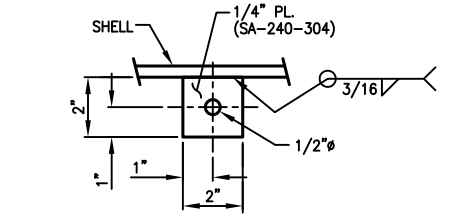
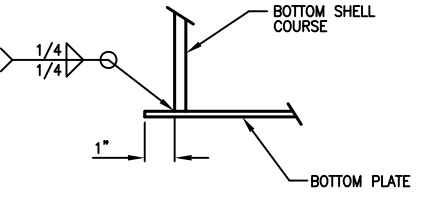


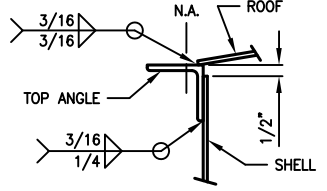
**ANCHOR CHAIR DETAIL**  
SCALE: 4X  
(12) REQ'D



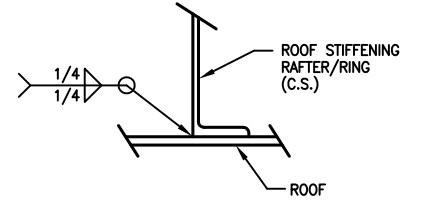
**GROUND LUG DETAIL**  
SCALE: 8X  
(2) REQ'D



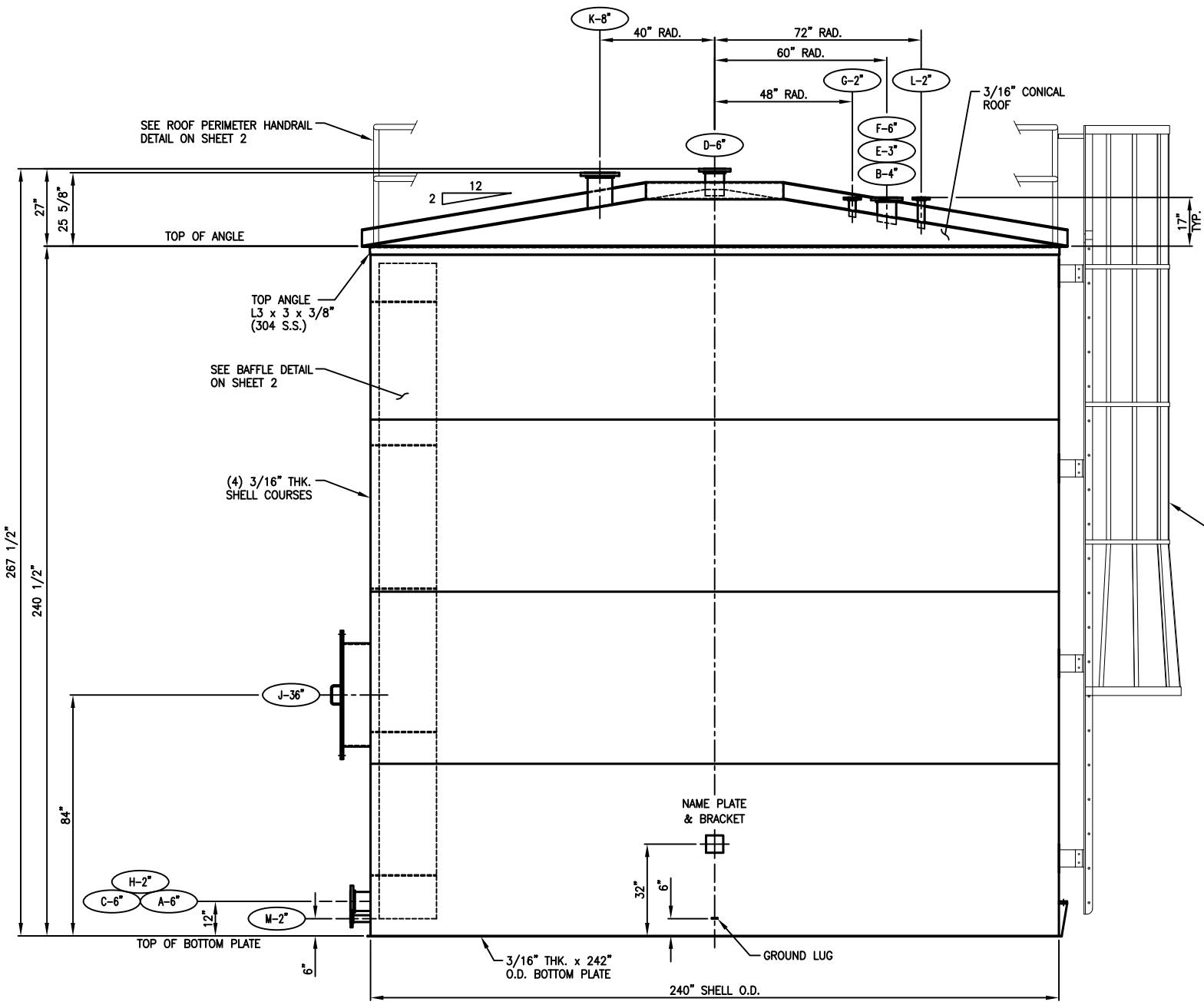
**BOTTOM PLATE WELD DETAIL**



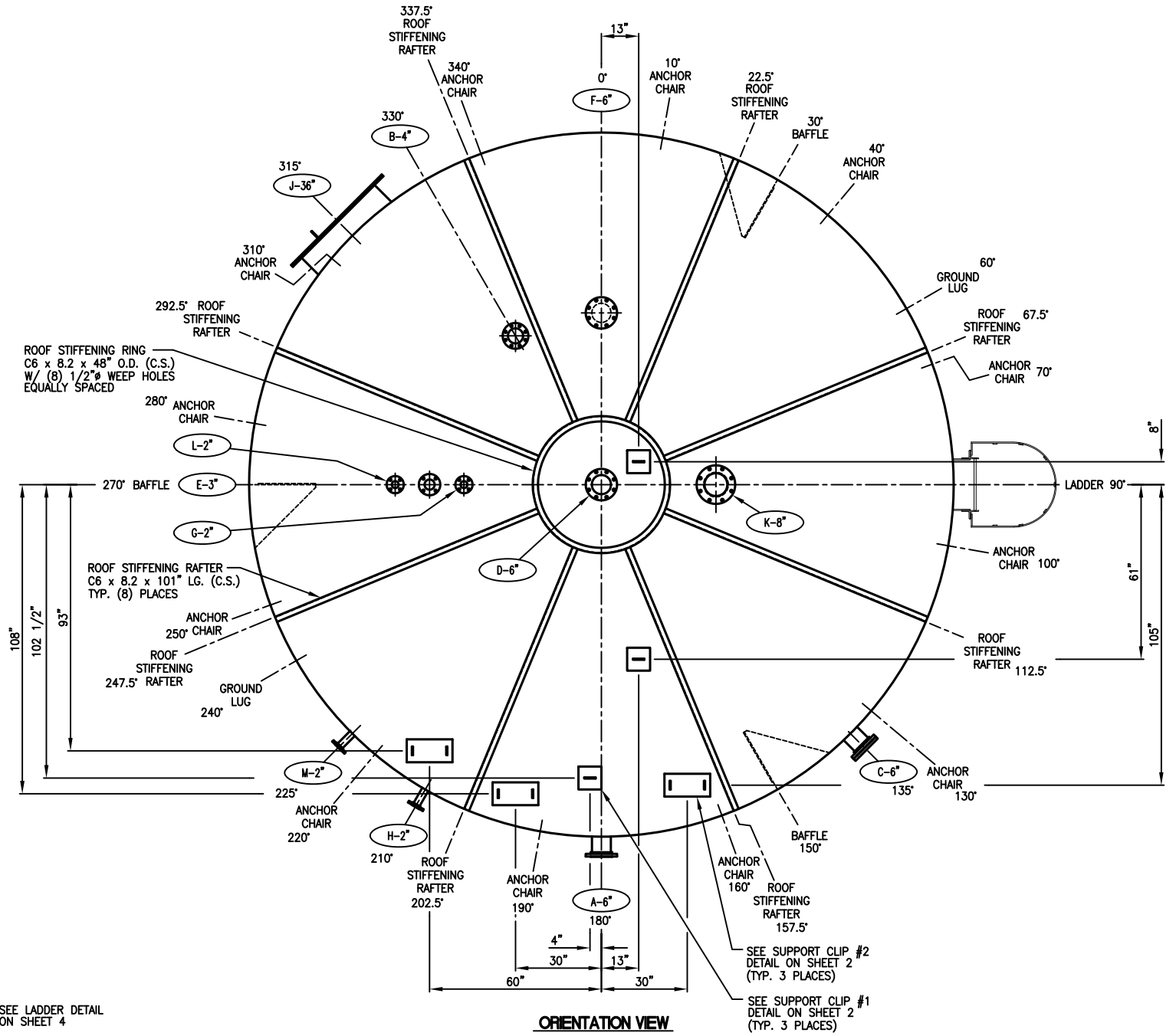
**TOP ANGLE DETAIL**



**TYPICAL ROOF SUPPORT WELD DETAIL**



**ELEVATION VIEW**

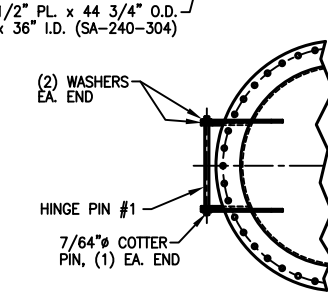
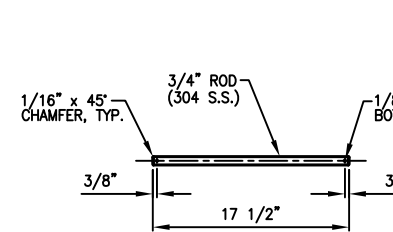
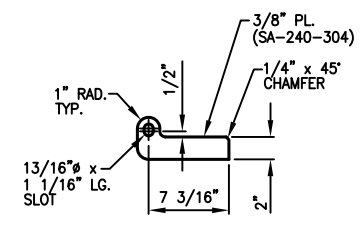
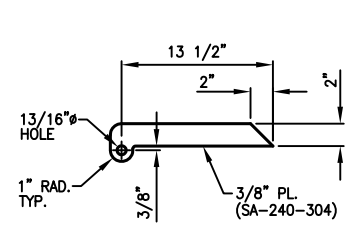
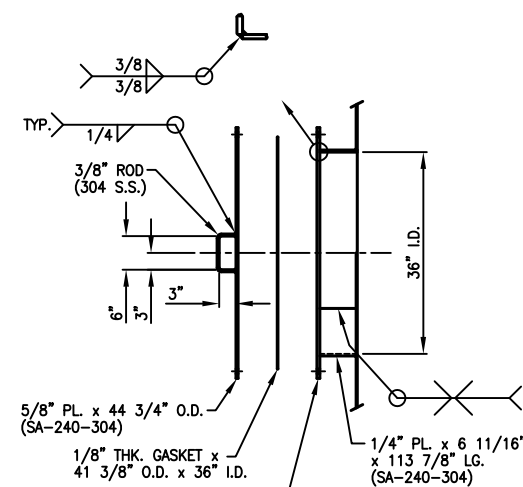
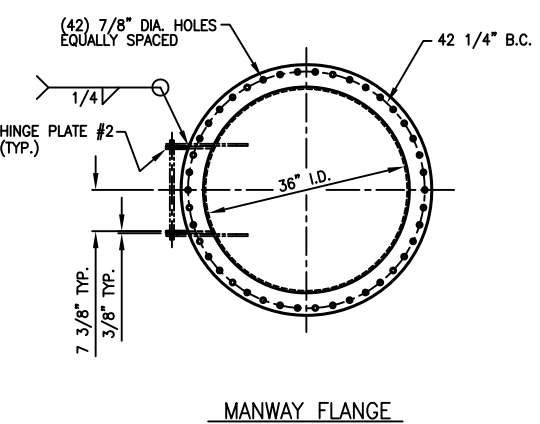
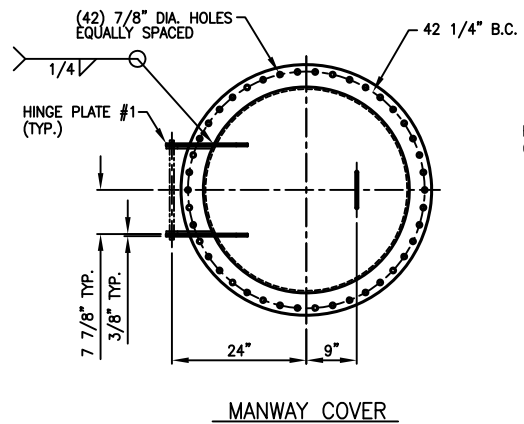


**ORIENTATION VIEW**

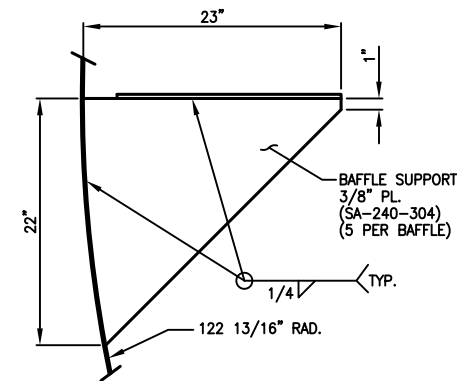
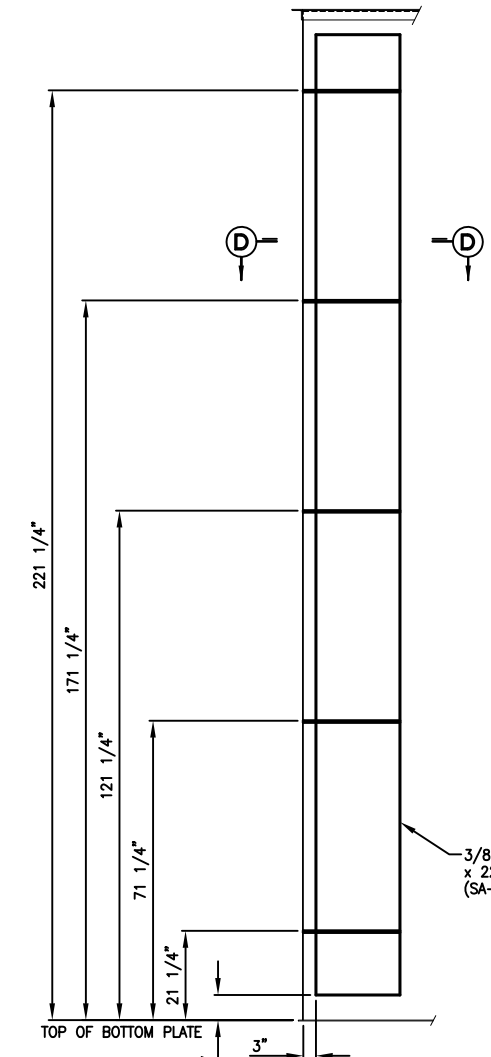
- GENERAL NOTES:**
1. THIS VESSEL IS DESIGNED AND CONSTRUCTED PER API 650, 10th EDITION.
  2. ALL NOZZLE BOLT HOLES ARE TO STRADDLE THE MAJOR VESSEL CENTERLINES UNLESS SPECIFICALLY NOTED OTHERWISE.
  3. ALL NOZZLE GASKET SURFACES REQUIRE A SERRATED SURFACE FINISH OF 125 TO 250 RMS.
  4. SCRIBING OR CENTER PUNCHING OF WORKLINES IS PROHIBITED.
  5. BREAK ALL SHARP EDGES.
  6. HANDRAIL AND LADDER TO BE PAINTED SAFETY YELLOW PER TORAY REQUIREMENTS.

THIS VESSEL CONFORMS TO API 650, 10th EDITION AND UNDER NO CIRCUMSTANCES SHALL THE SAFETY DEVICES BE SET AT GREATER THAN THE MAXIMUM ALLOWABLE WORKING PRESSURE.

PRESSURE VESSEL DATA			
	VESSEL	JACKET	COIL
MAWP (PSIG) @ DESIGN TEMP (°F)	ATM @ 200	-	-
MDMT (°F) @ MAWP (PSIG)	-20 @ ATM	-	-
HYDROSTATIC TEST PRESSURE (PSIG)	FULL OF WATER	-	-
CORROSION ALLOWANCE (IN.)	NONE	-	-
STRESS RELIEF	NONE	-	-
STRENGTH LIMITING VESSEL PART	-	-	-
EMPTY/FULL WEIGHT OF SG 1.00	15,392#/409,757#	-	-
FULL VOLUME (GALLONS)	46,855	-	-
WIND DESIGN/SPEED	100 MPH	-	-
SEISMIC DESIGN	ZONE 1	-	-
GENERAL DATA			
HEAD PLATE MAT'L, ASME	SA-240-304	-	-
SHELL PLATE MAT'L, ASME	SA-240-304	-	-
BOLT MAT'L, ASME	SA-193-B8	-	-
NUT MAT'L, ASME	SA-194-Gr. 8	-	-
SHIPPING GASKET MAT'L	-	-	-
SERVICE GASKET MAT'L	GORE GR	-	-

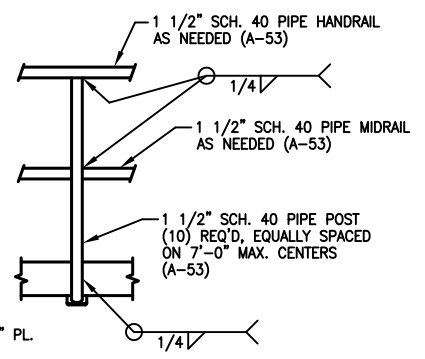
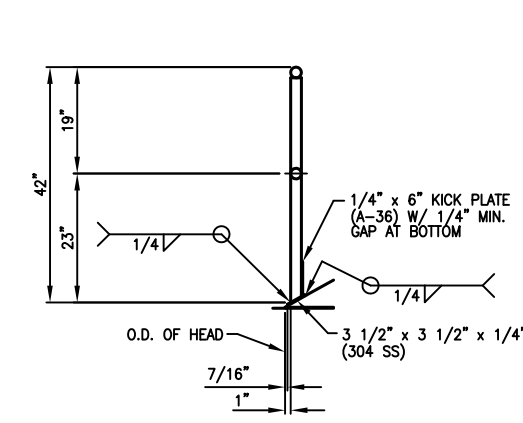


**DETAIL OF 36" SHELL MANWAY J**  
SCALE: 2X

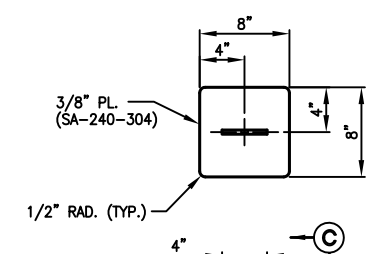


**BAFFLE DETAIL**  
SCALE: 1.5X  
(3) REQ'D

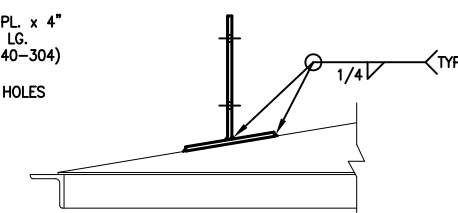
**SECTION D-D**  
SCALE: 4X



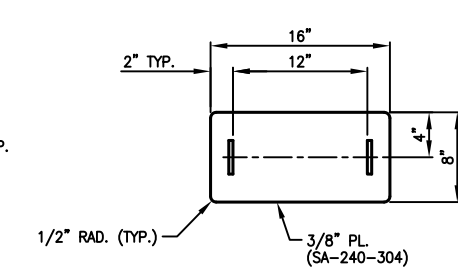
**ROOF PERIMETER HANDRAIL DETAIL**  
SCALE: 2X



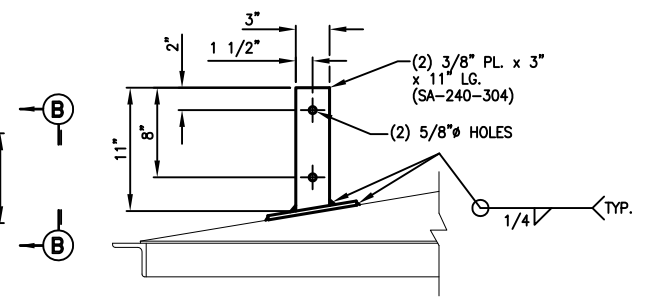
**SUPPORT CLIP #2 DETAIL**  
SCALE: 4X  
(3) REQ'D



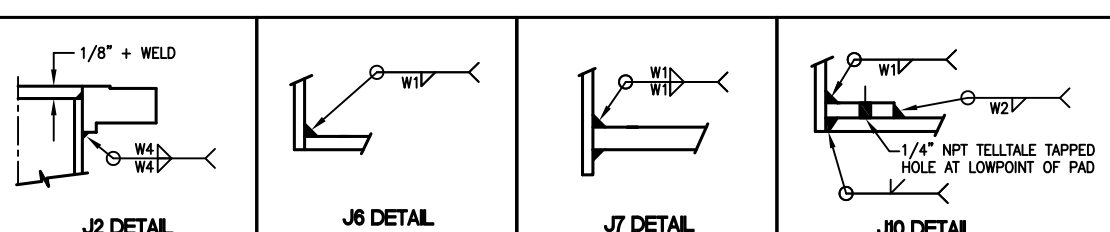
**SECTION C-C**  
SCALE: 4X



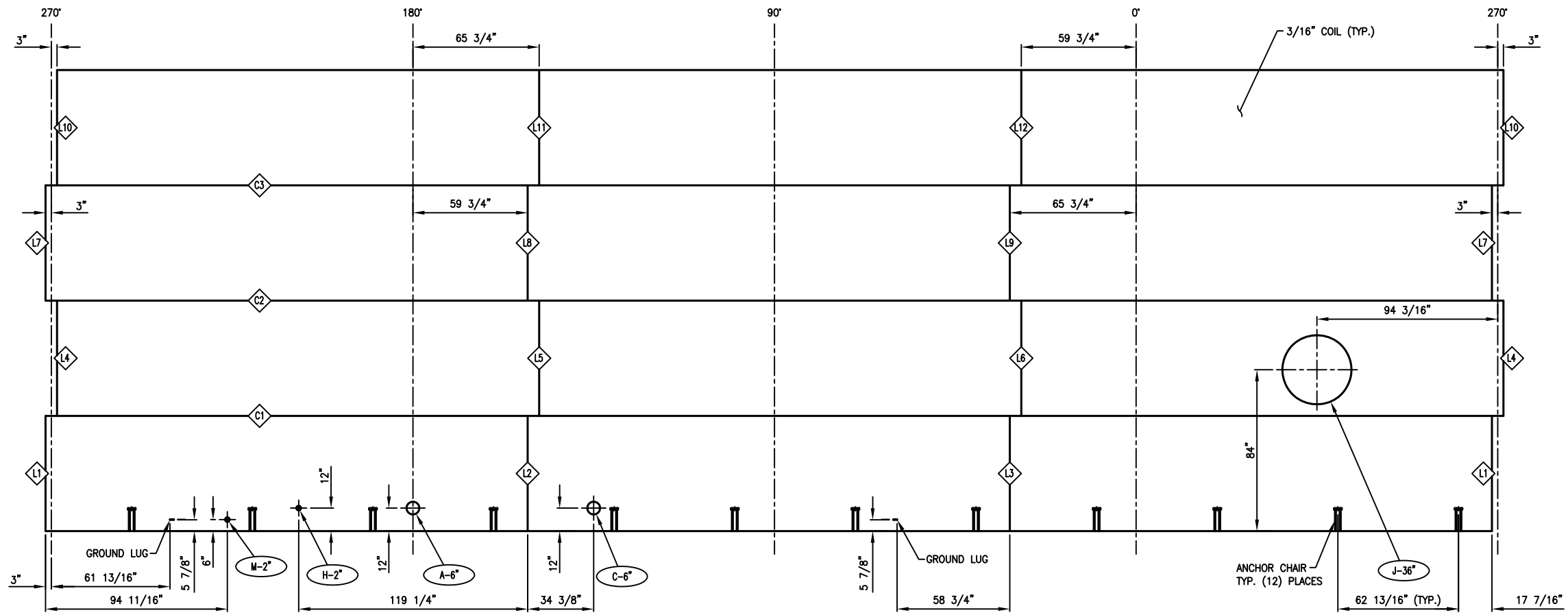
**SUPPORT CLIP #1 DETAIL**  
SCALE: 4X  
(3) REQ'D



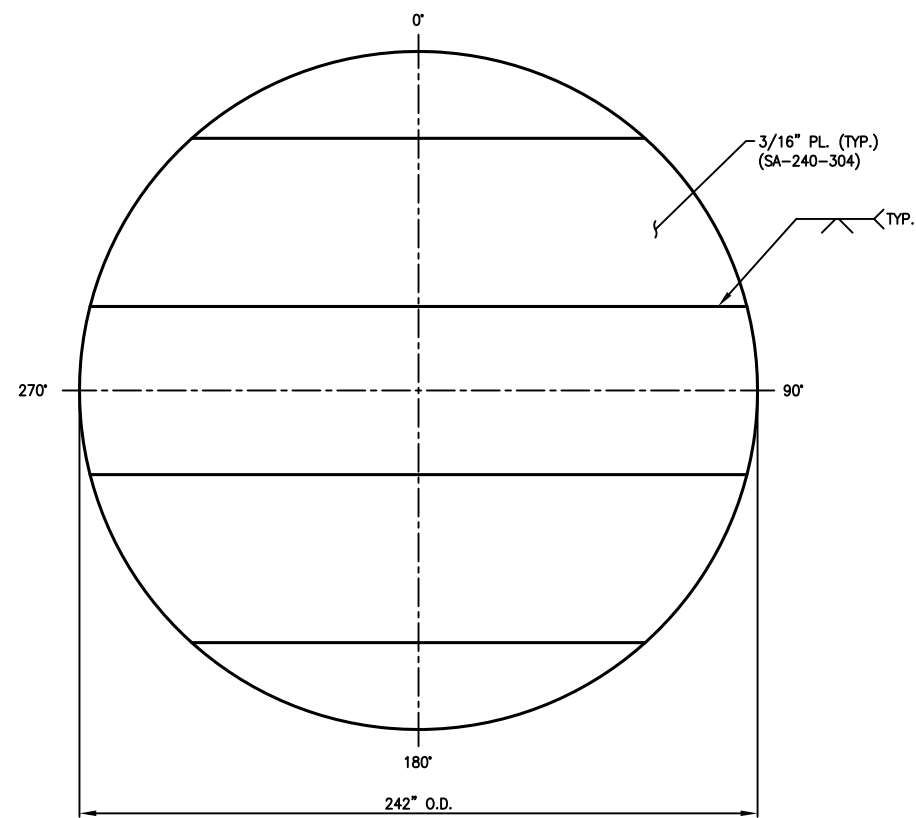
**SECTION B-B**  
SCALE: 4X



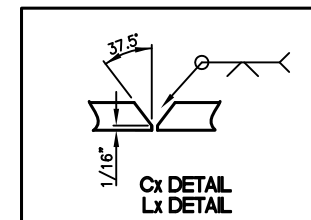
MARK	QUAN	SIZE	MATERIAL	RATING	TYPE	MATERIAL	TH'KN	LENGTH	MATERIAL	TH'KN X WIDTH	BLIND/HIGH HUB	HH BORE	#BOLTS	#STUDS	DESCRIPTION	#NUTS	#SHIP	#SERV.	FLANGE	NECK	W1	W2	W3	W4	D1	EXTERNAL	INTERNAL	MARK	COMMENTS	
DRAIN	M	1	2"	SA-182-F304	150#	RFSO	SA-312-TP304	SCH. XS	6 15/16"	-	-	-	-	-	-	-	-	-	-	J2	J6	-	-	-	1/4"	-	7"	FLUSH	M	-
INLET	L	1	2"	SA-182-F304	150#	RFSO	SA-312-TP304	SCH. XS	10 11/16"	-	-	-	-	-	-	-	-	-	-	J2	J7	1/4"	-	-	1/4"	-	8 11/16"	2" +/-	L	-
MIXER	K	1	8"	SA-182-F304	150#	RFSO	SA-312-TP304	STD. WT.	12 5/16"	SA-240-304	3/16" x 4"	-	-	-	-	-	-	-	-	J2	J10	1/4"	3/16"	-	1/4"	-	12"	FLUSH	K	-
MANWAY	J	1	36"	SA-240-304	SEE DETAIL	SEE DETAIL	SA-240-304	SEE DETAIL	-	-	SA-240-304	-	42	-	3/4" x 3"	42	-	1	DET.	J6	-	-	-	1/4"	-	7"	FLUSH	J	-	
INSTRUMENT	H	1	2"	SA-182-F304	150#	RFSO	SA-312-TP304	SCH. XS	8 15/16"	-	-	-	-	-	-	-	-	-	-	J2	J7	1/4"	-	-	1/4"	-	7"	2" +/-	H	-
INLET	G	1	2"	SA-182-F304	150#	RFSO	SA-312-TP304	SCH. XS	6 11/16"	-	-	-	-	-	-	-	-	-	-	J2	J7	1/4"	-	-	1/4"	-	4 11/16"	2" +/-	G	-
SPARE	F	1	6"	SA-182-F304	150#	RFSO	SA-312-TP304	STD. WT.	9 3/16"	-	-	SA-182-F304	-	8	3/4" x 3 3/4"	16	-	1	J2	J7	1/4"	-	-	1/4"	-	6 11/16"	2" +/-	F	-	
RECIRC.	E	1	3"	SA-182-F304	150#	RFSO	SA-312-TP304	STD. WT.	8 15/16"	-	-	-	-	-	-	-	-	-	-	J2	J7	1/4"	-	-	1/4"	-	6 11/16"	2" +/-	E	-
VENT	D	1	6"	SA-182-F304	150#	RFSO	SA-312-TP304	STD. WT.	9 1/2"	-	-	-	-	-	-	-	-	-	-	J2	J7	1/4"	-	-	1/4"	-	7"	2" +/-	D	-
SPARE	C	1	6"	SA-182-F304	150#	RFSO	SA-312-TP304	STD. WT.	9"	-	-	SA-182-F304	-	8	3/4" x 3 3/4"	16	-	1	J2	J7	1/4"	-	-	1/4"	-	7"	2" +/-	C	-	
INLET	B	1	4"	SA-182-F304	150#	RFSO	SA-312-TP304	STD. WT.	9"	-	-	-	-	-	-	-	-	-	-	J2	J7	1/4"	-	-	1/4"	-	6 11/16"	2" +/-	B	-
SUCTION	A	1	6"	SA-182-F304	150#	RFSO	SA-312-TP304	STD. WT.	9"	-	-	-	-	-	-	-	-	-	-	J2	J7	1/4"	-	-	1/4"	-	7"	2" +/-	A	-

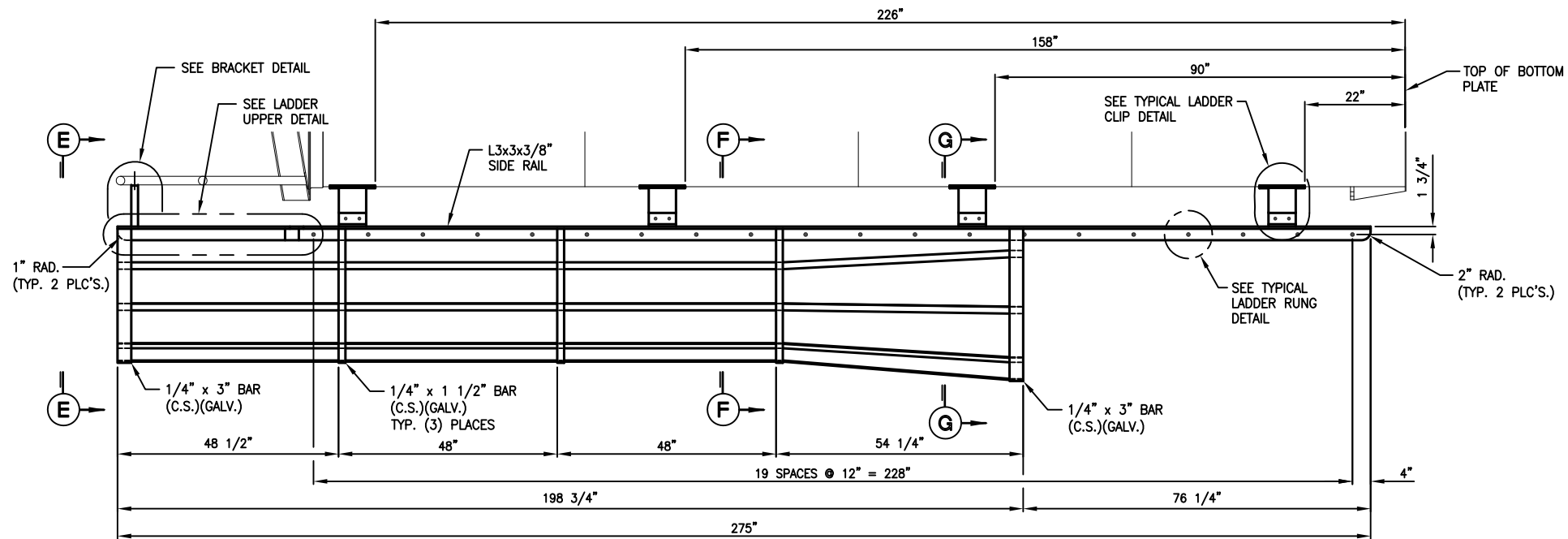


**SHELL DEVELOPMENT DETAIL**

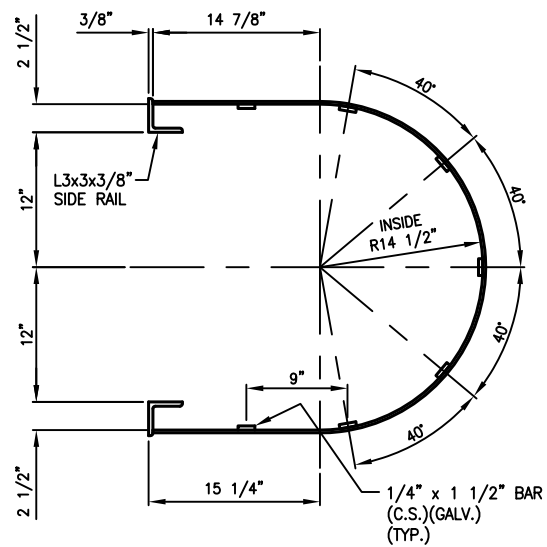


**BOTTOM PLATE DETAIL**

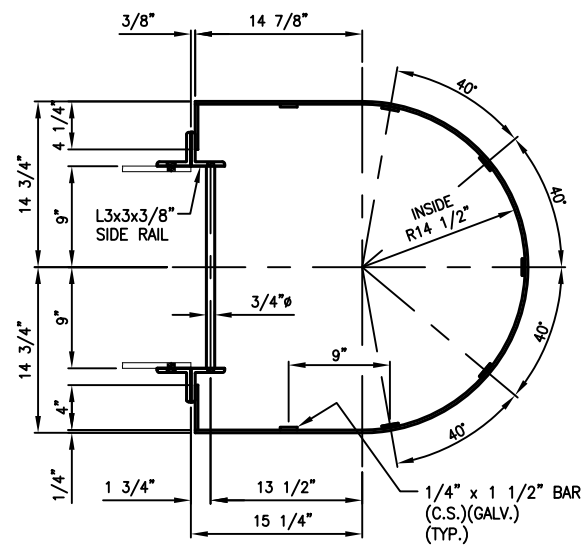




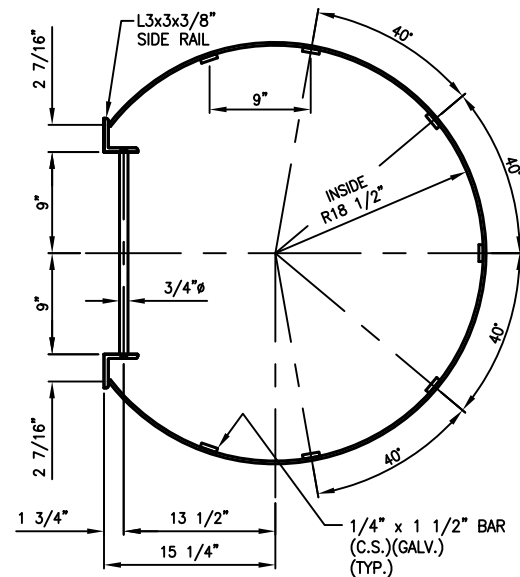
**LADDER DETAIL**



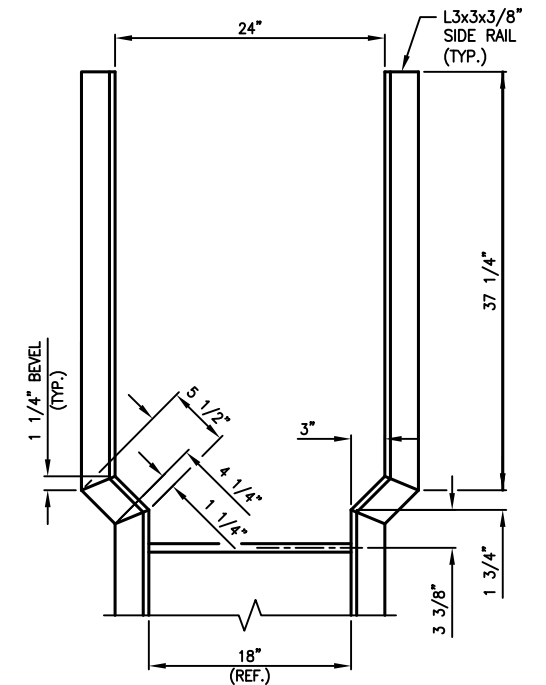
**SECTION E-E**  
SCALE: 2X



**SECTION F-F**  
SCALE: 2X

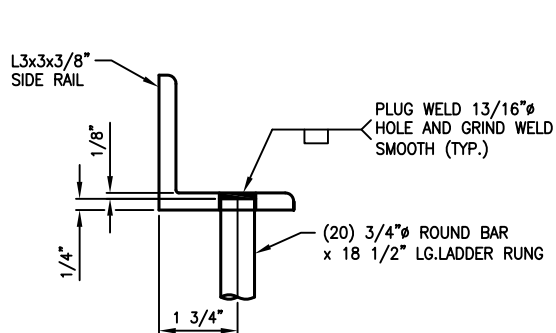


**SECTION G-G**  
SCALE: 2X

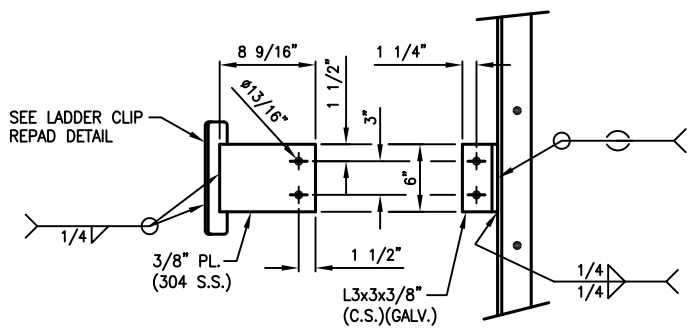


**LADDER UPPER DETAIL**  
SCALE: 2X

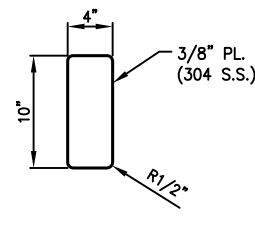
**ALL C.S. ITEMS TO BE HOT DP GALV.**



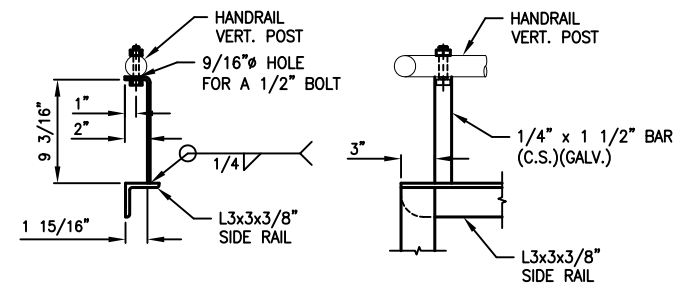
**TYPICAL LADDER RUNG DETAIL**



**TYPICAL LADDER CLIP DETAIL**



**LADDER CLIP REPAD DETAIL**  
SCALE: 2X  
(8) REQ'D



**BRACKET DETAIL**  
SCALE: 2X  
(2) REQ'D