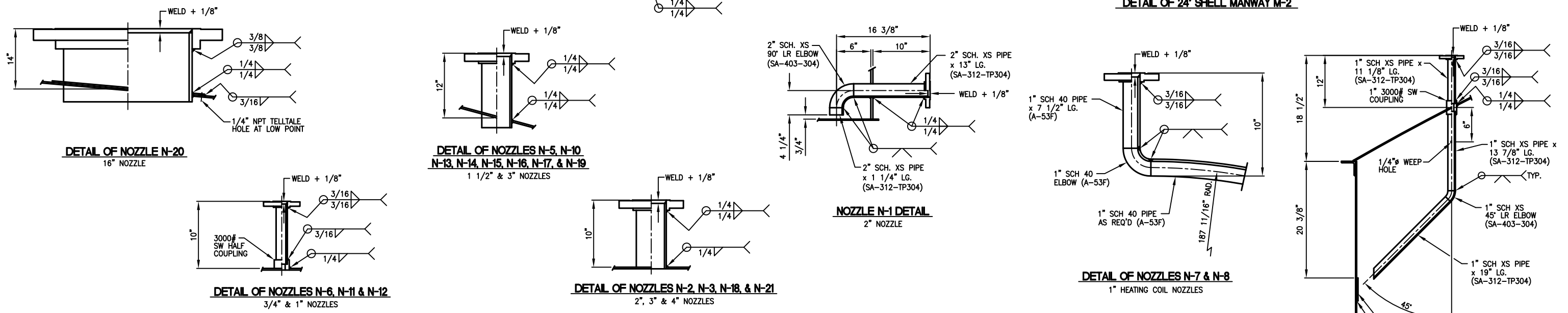
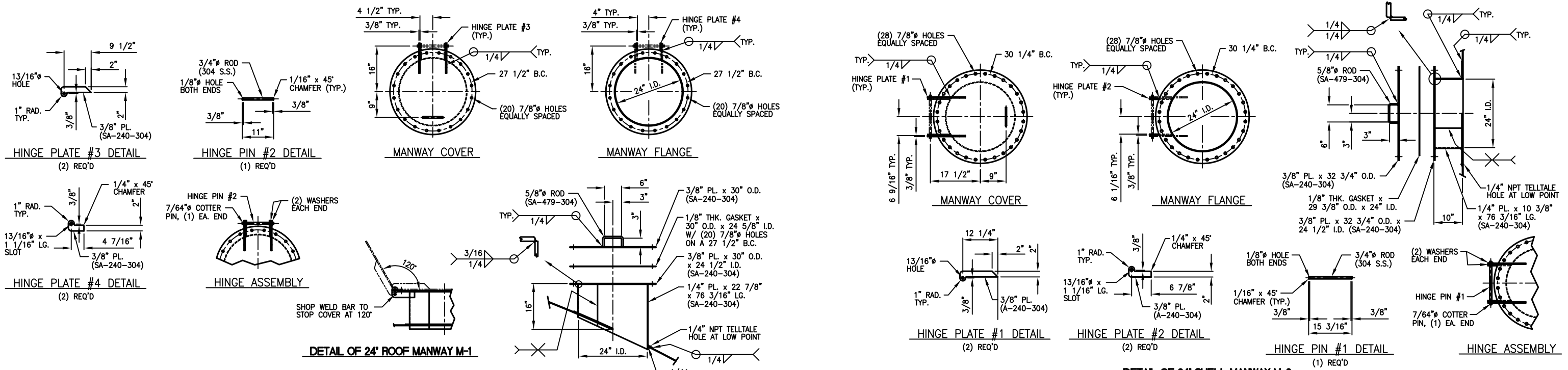


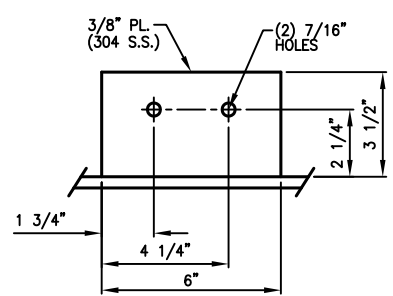
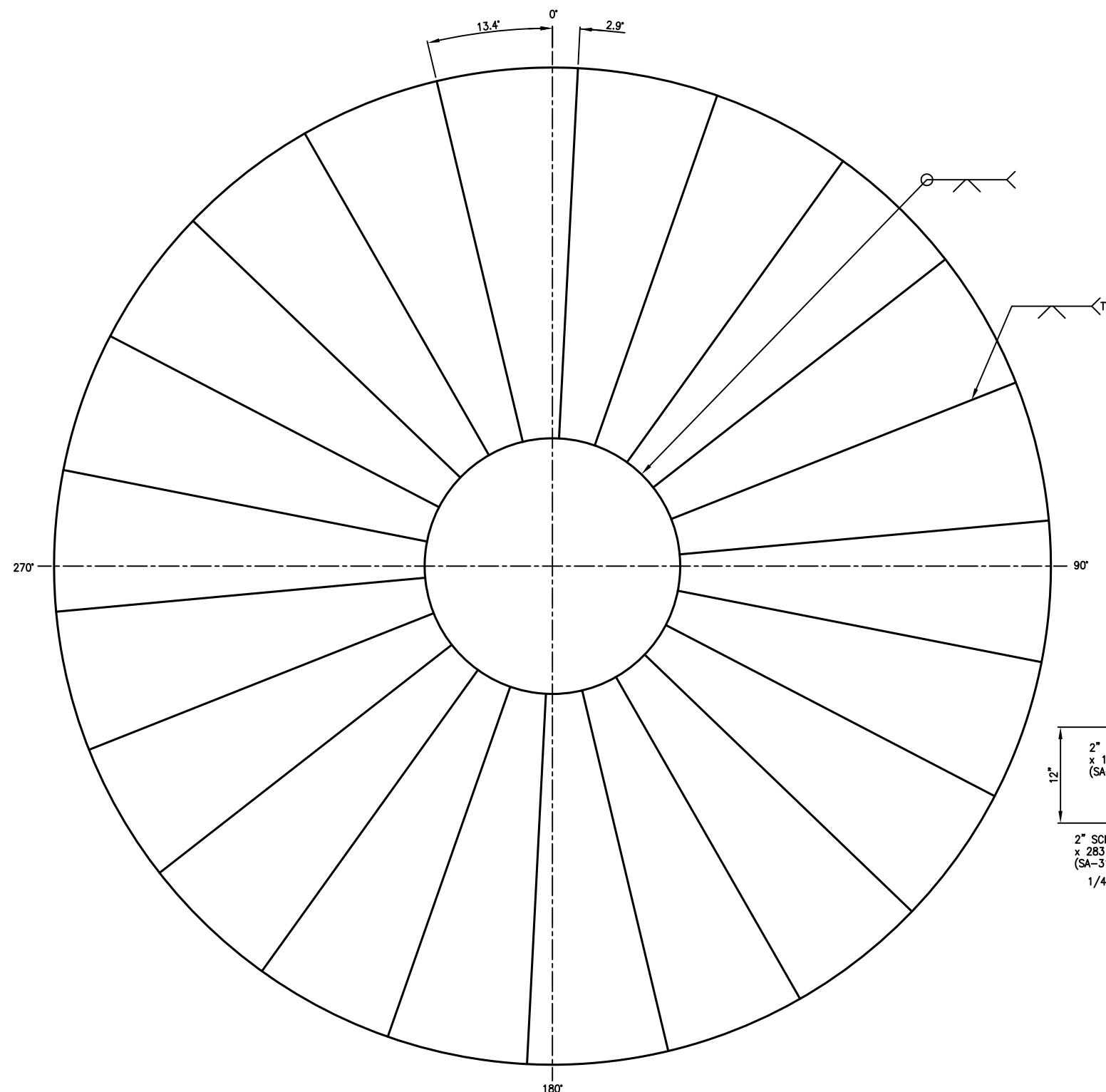
- GENERAL NOTES:**
1. THIS VESSEL IS DESIGNED AND CONSTRUCTED PER API 650, 10TH EDITION.
  2. ALL NOZZLE BOLT HOLES ARE TO STRADDLE THE MAJOR VESSEL CENTERLINES UNLESS SPECIFICALLY NOTED OTHERWISE.
  3. ALL NOZZLE GASKET SURFACES REQUIRE A SERRATED SURFACE FINISH OF 125 TO 250 RMS.
  4. SCRIBING OR CENTER PUNCHING OF WORK LINES IS PROHIBITED.
  5. BREAK ALL SHARP EDGES.
  6. INTERNAL SURFACES TO BE NEUTRALIZED WITH CITRIC ACID SOLUTION AND WASHED WITH CLEAN WATER.
  7. INSIDE WELDS TO BE BRUSHED CLEAN.
  8. ALL INTERNAL NOZZLES SHOULD BE CHECKED FOR INSIDE CLEANING BEFORE INSTALLATION.

THIS VESSEL CONFORMS TO API 650, 10TH EDITION AND UNDER NO CIRCUMSTANCES SHALL THE SAFETY DEVICES BE SET AT GREATER THAN THE MAXIMUM ALLOWABLE WORKING PRESSURE.

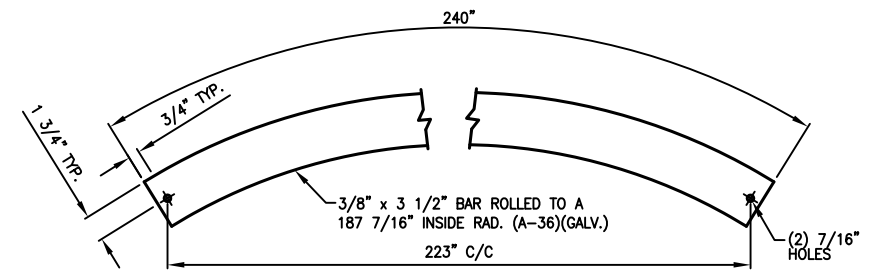
PRESSURE VESSEL DATA			
	VESSEL	JACKET	COIL
MAWP (PSIG) @ DESIGN TEMP (°F)	1.574/-0.077 @ 212	-	-
MDMT (°F) @ MAWP (PSIG)	-20 @ 1.574/-0.077	-	-
HYDROSTATIC TEST PRESSURE (PSIG)	.906	-	-
CORROSION ALLOWANCE (IN.)	NONE	-	-
STRESS RELIEF	NONE	-	-
STRENGTH LIMITING VESSEL PART	-	-	-
EMPTY/FULL WEIGHT OF SG 1.43	34,091#/1,635,134#	-	-
FULL VOLUME (GALLONS)	132,615	-	-
WIND DESIGN/SPEED	100 MPH	-	-
SEISMIC DESIGN	ZONE 1	-	-
GENERAL DATA			
HEAD PLATE MAT'L, ASME	SA-240-304	-	-
SHELL PLATE MAT'L, ASME	SA-240-304	-	-
BOLT MAT'L, ASME	SA-193-B8	-	-
NUT MAT'L, ASME	SA-193-B8	-	-
SHIPPING GASKET MAT'L	-	-	-
SERVICE GASKET MAT'L	GYLON 3510	-	-



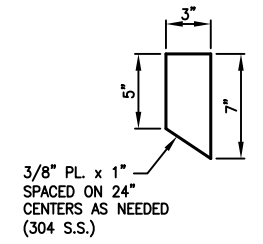
MANWAY	M-2	1	24"	SA-240-304	SEE DETAIL	SA-240-304	SEE DETAIL	SA-240-304	1/4" x 3"	-	-	20	-	3/4" x 3"	20	-	1	10"	FLUSH	M-2	-																	
MANWAY	M-1	1	24"	SA-240-304	SEE DETAIL	SA-240-304	SEE DETAIL	SA-240-304	1/4" x 2"	-	-	28	-	3/4" x 3"	28	-	1	16"	1" +/-	M-1	-																	
SPARE	N-21	1	2"	SA-182-F304	150#	RFSO	SA-312-TP304	SCH XS	10 7/16"	-	-	4	-	5/8" x 3"	8	-	1	10"	FLUSH	N-21	-																	
VALVE	N-20	1	16"	SA-182-F304	150#	RFSO	SA-312-TP304	STD WT	19"	SA-240-304	3/16" x 1 1/2"	-	-	-	-	-	-	14"	1" +/-	N-20	-																	
SPARE	N-19	1	3"	SA-182-F304	150#	RFSO	SA-312-TP304	STD WT	13 13/16"	-	-	-	-	4	5/8" x 3 1/2"	8	-	1	12"	1" +/-	N-19	-																
INLET	N-18	1	4"	SA-182-F304	150#	RFSO	SA-312-TP304	STD WT	10 7/16"	-	-	-	-	-	-	-	-	10"	FLUSH	N-18	-																	
SPARE	N-17	1	3"	SA-182-F304	150#	RFSO	SA-312-TP304	STD WT	13 13/16"	-	-	-	-	4	5/8" x 3 1/2"	8	-	1	12"	1" +/-	N-17	-																
SPARE	N-16	1	3"	SA-182-F304	150#	RFSO	SA-312-TP304	STD WT	13 13/16"	-	-	-	-	4	5/8" x 3 1/2"	8	-	1	12"	1" +/-	N-16	-																
LS	N-15	1	1 1/2"	SA-182-F304	150#	RFSO	SA-312-TP304	SCH XS	13 1/2"	-	-	-	-	-	-	-	-	12"	1" +/-	N-15	-																	
VALVE	N-14	1	3"	SA-182-F304	150#	RFSO	SA-312-TP304	STD WT	13 13/16"	-	-	-	-	-	-	-	-	12"	1" +/-	N-14	-																	
VALVE	N-13	1	3"	SA-182-F304	150#	RFSO	SA-312-TP304	STD WT	12 15/16"	-	-	-	-	-	-	-	-	12"	FLUSH	N-13	-																	
TE	N-12	1	1"	SA-182-F304	150#	RFSO	SA-312-TP304	SCH XS	10 1/2"	-	-	-	-	-	-	-	-	10"	FLUSH	N-12	W/ 1" 3000# SW HALF COUPLING																	
RETURN	N-11	1	3/4"	SA-182-F304	150#	RFSO	SA-312-TP304	SCH XS	11 1/4"	-	-	-	-	-	-	-	-	10"	FLUSH	N-11	W/ 3/4" 3000# SW HALF COUPLING																	
LIT	N-10	1	3"	SA-182-F304	150#	RFSO	SA-312-TP304	STD WT	13 13/16"	-	-	-	-	-	-	-	-	12"	1" +/-	N-10	-																	
INLET	N-9	1	1"	SA-182-F304	150#	RFSO	SA-312-TP304	SCH XS	SEE DET.	-	-	-	-	-	-	-	-	12"	SEE DET.	N-9	W/ 1" 3000# SW COUPLING																	
INLET	N-8	6	1"	SA-105	150#	RFSO	A-53F	SCH 40	SEE DET.	-	-	-	-	-	-	-	-	10"	-	N-8	HEATING COIL																	
INLET	N-7	6	1"	SA-105	150#	RFSO	A-53F	SCH 40	SEE DET.	-	-	-	-	-	-	-	-	10"	-	N-7	HEATING COIL																	
SPARE	N-6	1	1"	SA-182-F304	150#	RFSO	SA-312-TP304	SCH XS	11 5/16"	-	-	-	-	4	1/2" x 2 1/2"	8	-	1	10"	FLUSH	N-6	W/ 1" 3000# SW HALF COUPLING																
INLET	N-5	1	3"	SA-182-F304	150#	RFSO	SA-312-TP304	STD WT	13 13/16"	-	-	-	-	-	-	-	-	12"	1" +/-	N-5	-																	
INLET	N-4	1	2"	SA-182-F304	150#	RFSO	SA-312-TP304	SCH XS	SEE DET.	-	-	-	-	-	-	-	-	12"	284 5/16"	N-4	W/ 2" 3000# SW COUPLING																	
LIT	N-3	1	3"	SA-182-F304	150#	RFSO	SA-312-TP304	STD WT	10 7/16"	-	-	-	-	-	-	-	-	10"	FLUSH	N-3	-																	
OUTLET	N-2	1	2"	SA-182-F304	150#	RFSO	SA-312-TP304	SCH XS	10 7/16"	-	-	-	-	-	-	-	-	10"	FLUSH	N-2	-																	
DRAIN	N-1	1	2"	SA-182-F304	150#	RFSO	SA-312-TP304	SCH XS	SEE DET.	-	-	-	-	-	-	-	-	10"	SEE DET.	N-1	-																	
SERVICE	MARK	QUAN	SIZE	MATERIAL	RATING	TYPE	MATERIAL	TH'KN	LENGTH	MATERIAL	TH'KN X WIDTH	MATERIAL	HH BORE	#BOLTS	#STUDS	DESCRIPTION	#NUTS	#SHIP	#SERV.	EXTERNAL	INTERNAL	MARK	COMMENTS															
				FLANGE					NECK					REPAD					BLIND/HIGH HUB					BOLTS/STUDS/NUTS					GASKETS					PROJECTIONS				



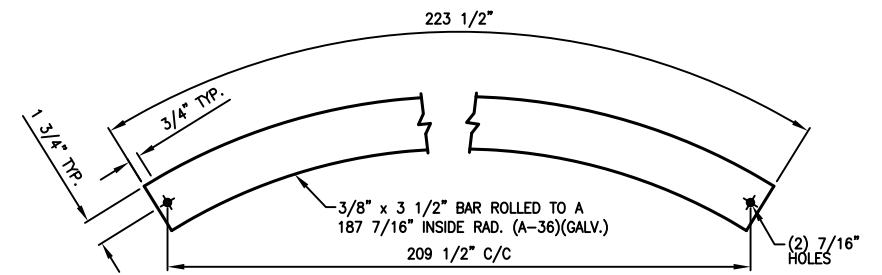
**INSULATION SUPPORT MOUNT**  
SCALE: 8X  
(10 REQ'D)



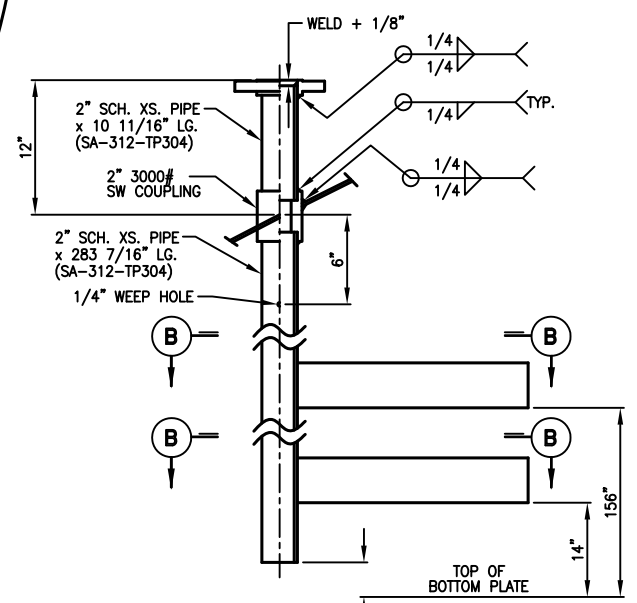
**INSULATION SUPPORT BAR #1**  
SCALE: 4X  
(8 REQ'D)



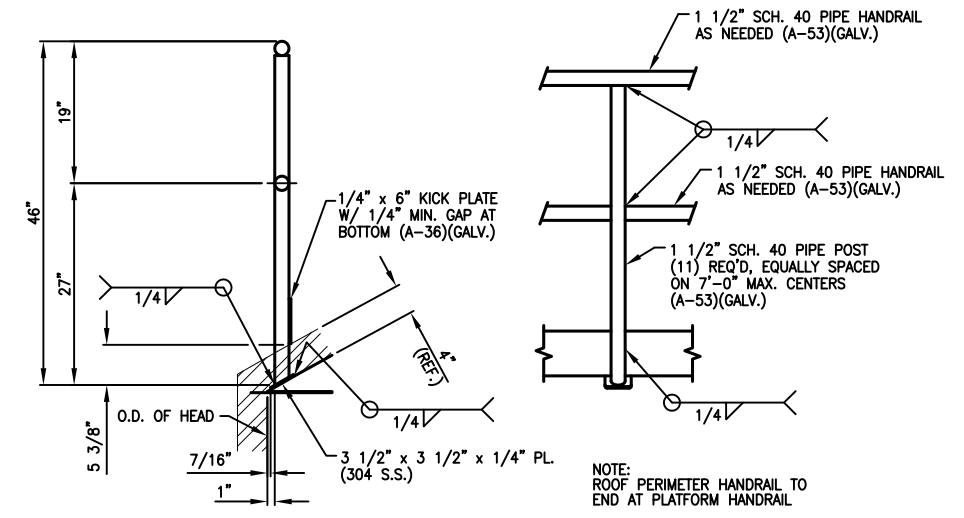
**INTERMEDIATE SUPPORT PLATE**  
SCALE: 4X  
(90 REQ'D)



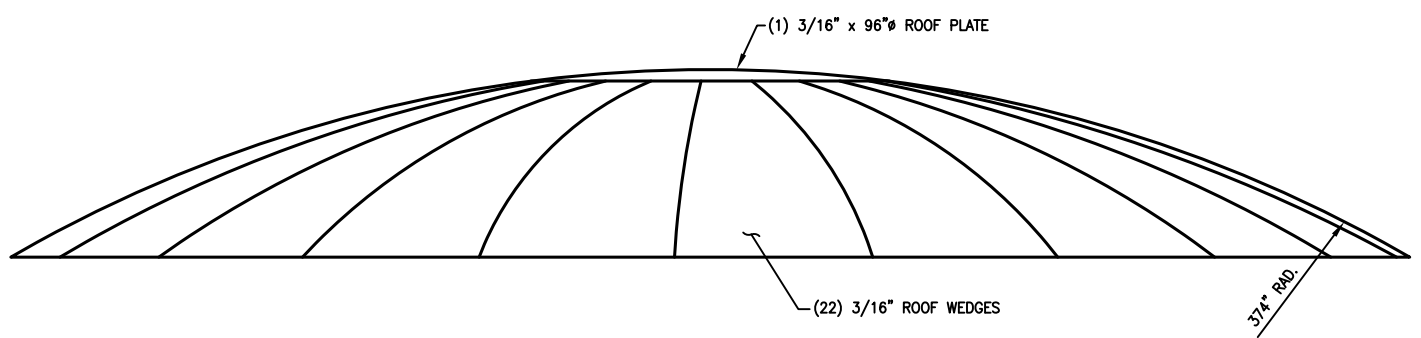
**INSULATION SUPPORT BAR #2**  
SCALE: 4X  
(2 REQ'D)



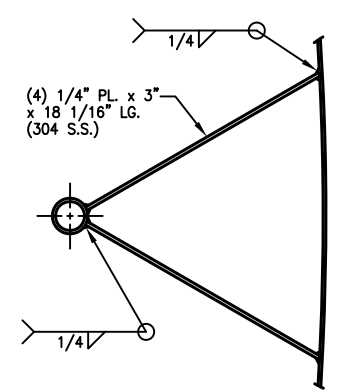
**NOZZLE N-4 DETAIL**  
2\"/>



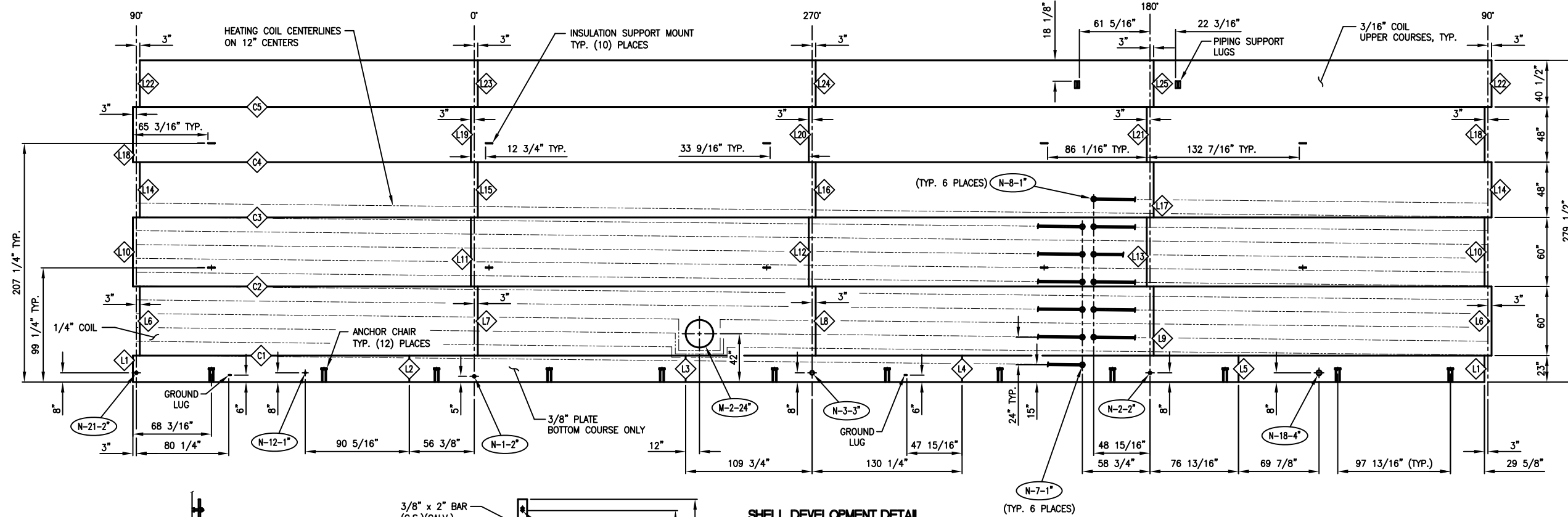
**ROOF PERIMETER HANDRAIL DETAIL**  
SCALE: 2X



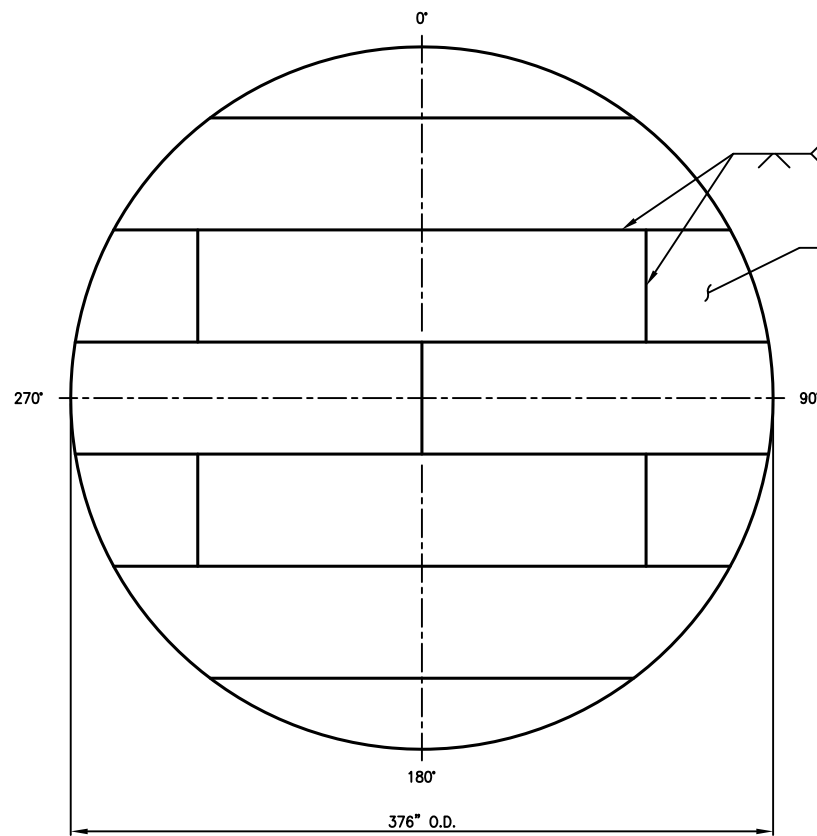
**ROOF DETAIL**



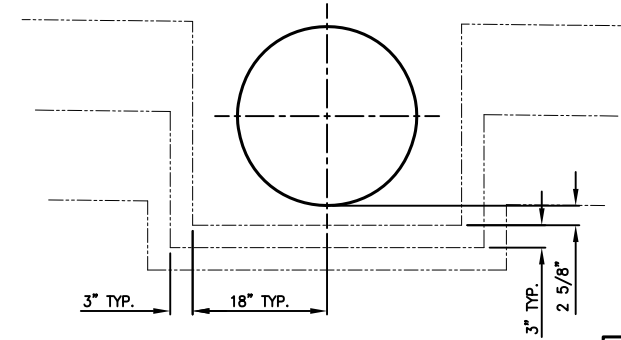
**SECTION B-B**



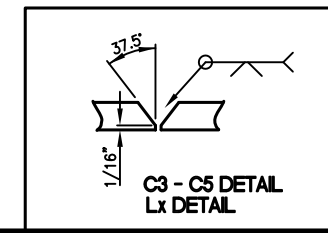
**SHELL DEVELOPMENT DETAIL**



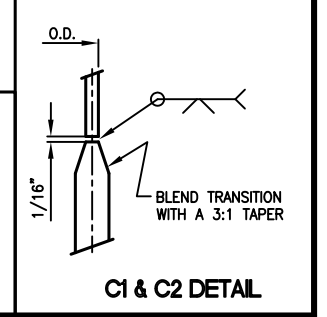
**BOTTOM PLATE DETAIL**



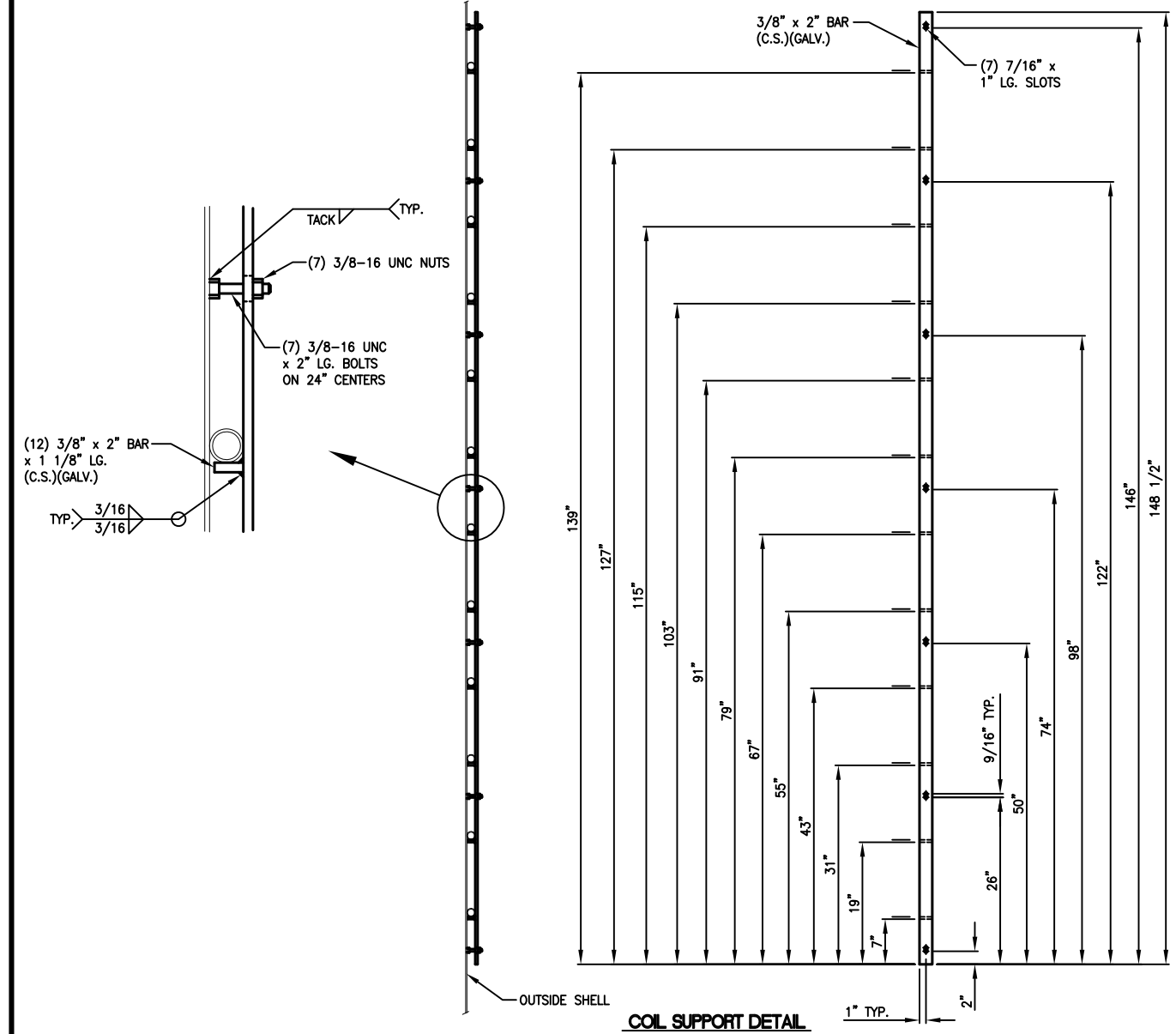
**HEATING COIL DETAIL AT NOZZLE M-2**



**C3 - C5 DETAIL Lx DETAIL**

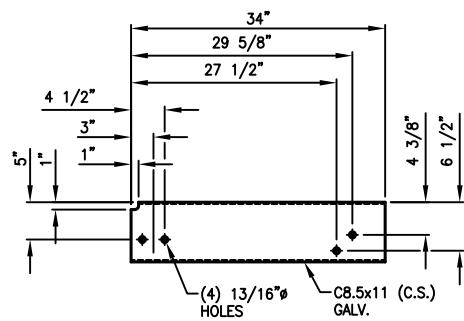


**C1 & C2 DETAIL**



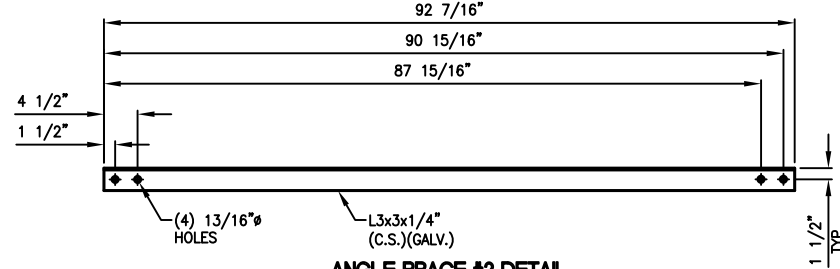
**COIL SUPPORT DETAIL**

SCALE: 4X  
(13) REQ'D



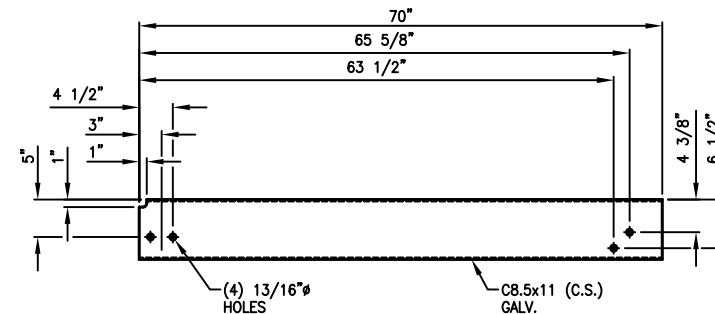
**PLATFORM CHANNEL #1 DETAIL**

SCALE: 2X  
(3) REQ'D AS SHOWN  
(1) REQ'D OPP. HAND



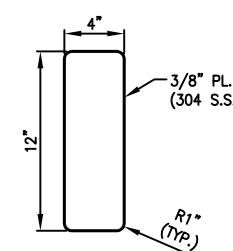
**ANGLE BRACE #2 DETAIL**

SCALE: 2X  
(3) REQ'D



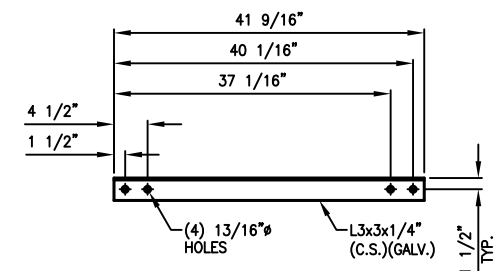
**PLATFORM CHANNEL #2 DETAIL**

SCALE: 2X  
(3) REQ'D AS SHOWN



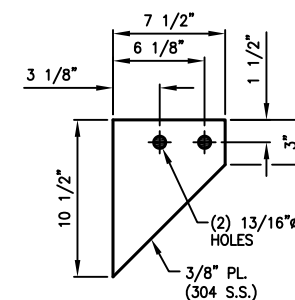
**PLATFORM CLIP REPAD DETAIL**

SCALE: 4X  
(14) REQ'D



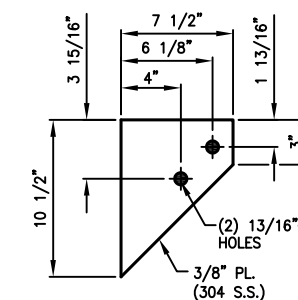
**ANGLE BRACE #1 DETAIL**

SCALE: 2X  
(4) REQ'D



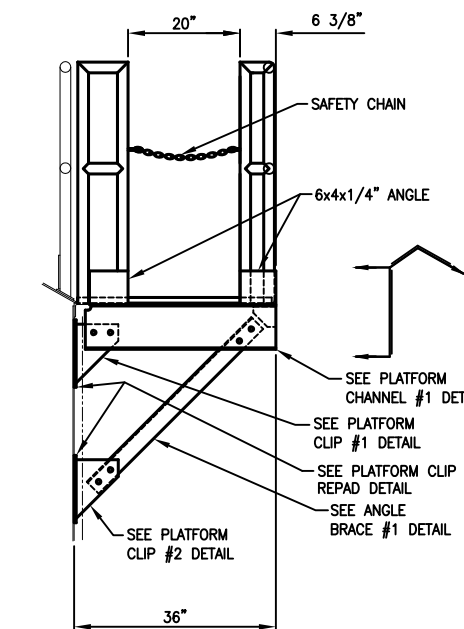
**PLATFORM CLIP #1 DETAIL**

SCALE: 4X  
(7) REQ'D



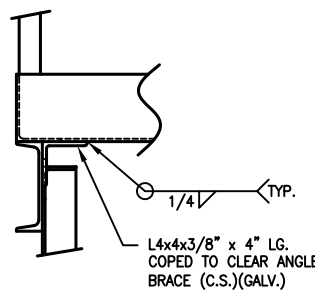
**PLATFORM CLIP #2 DETAIL**

SCALE: 4X  
(7) REQ'D



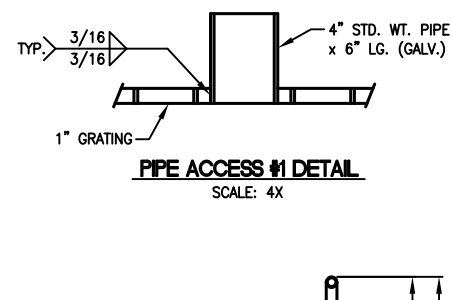
**SECTION C-C**

SCALE: 1.5X



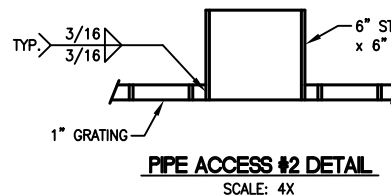
**PIPE ACCESS #1 DETAIL**

SCALE: 4X



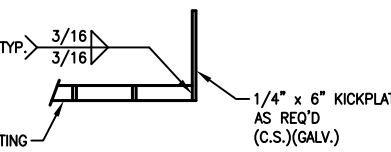
**SECTION D-D**

SCALE: 1.5X  
PLATFORM SUPPORT DETAIL  
TYP. (4) PLACES



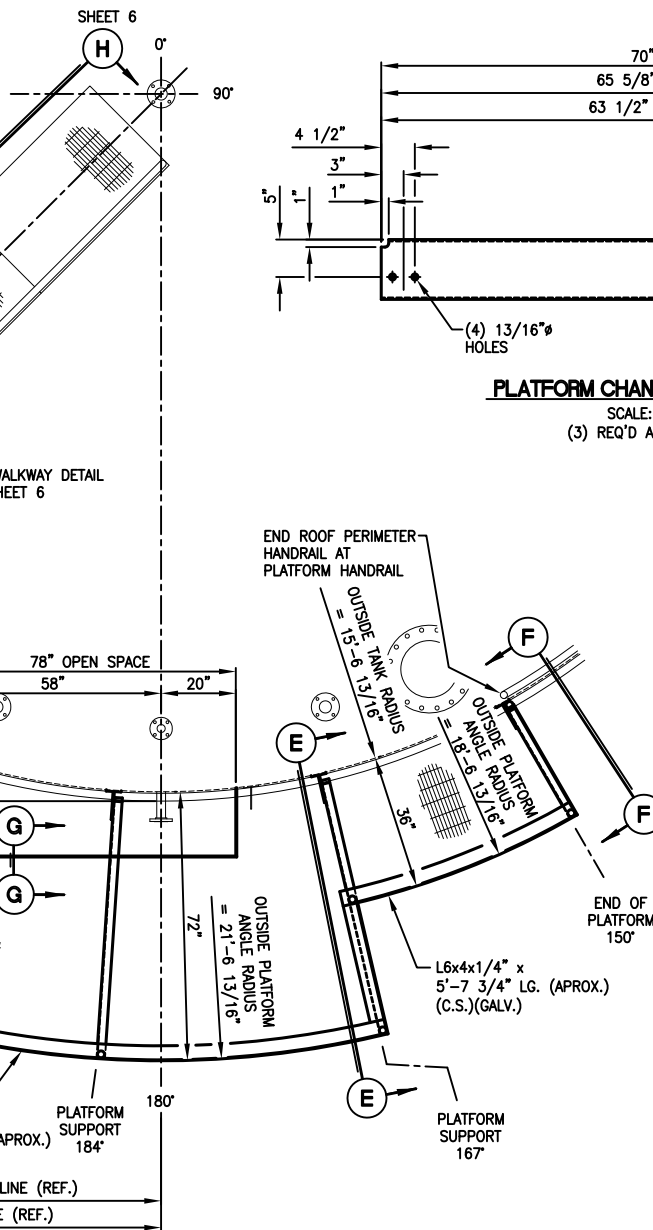
**PIPE ACCESS #2 DETAIL**

SCALE: 4X

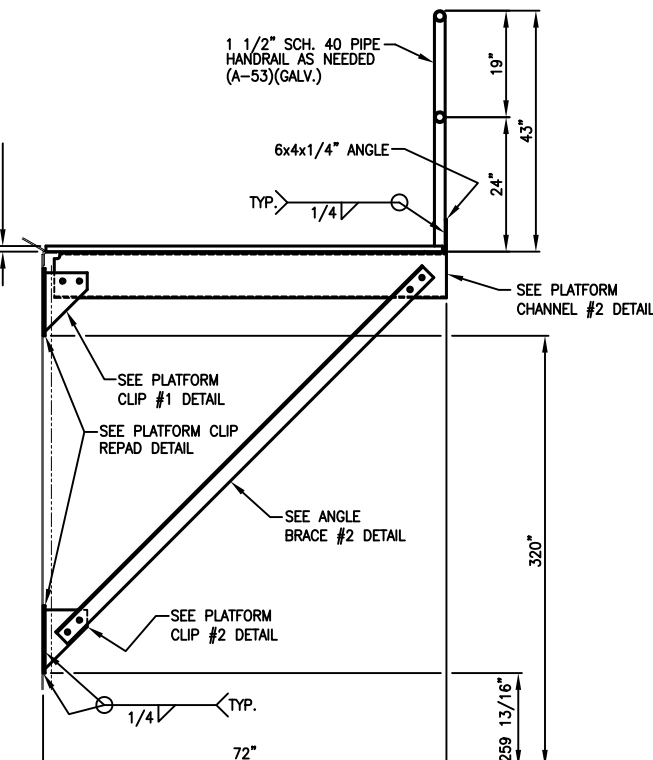


**SECTION G-G**

SCALE: 4X

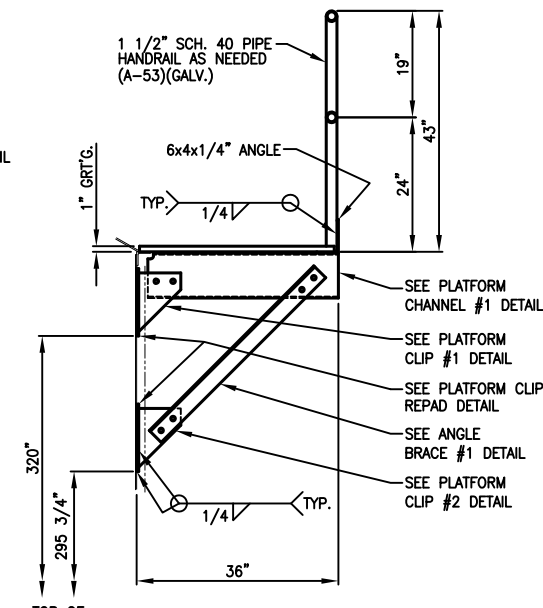


**PLATFORM ORIENTATION VIEW**



**SECTION E-E**

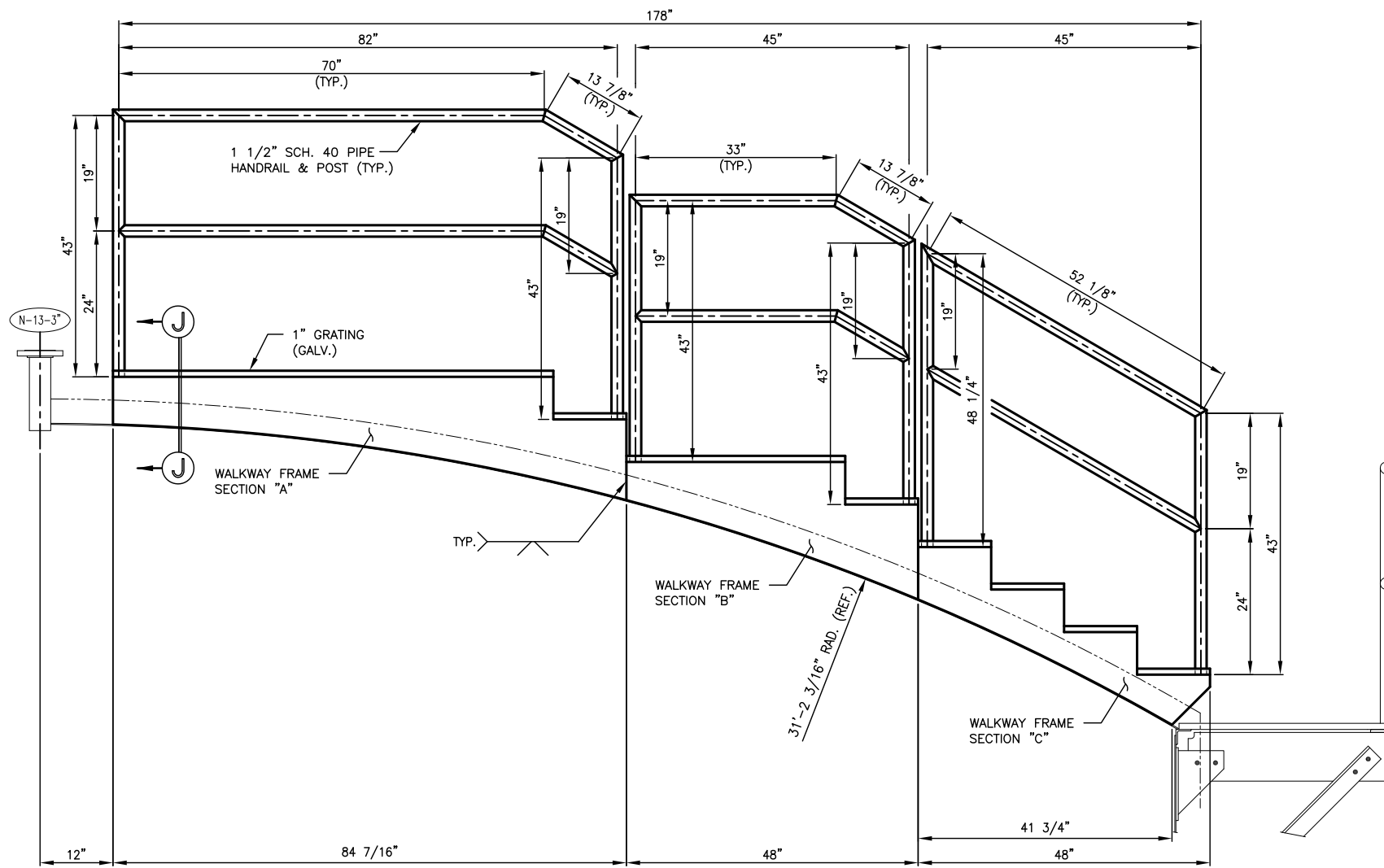
SCALE: 1.5X  
PLATFORM SUPPORT DETAIL  
TYP. (3) PLACES



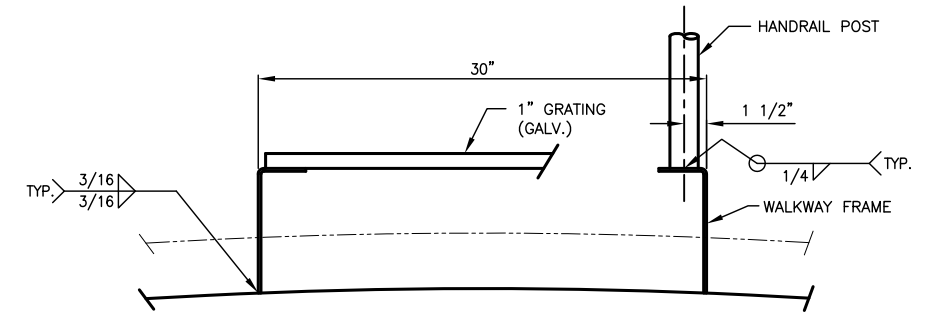
**SECTION F-F**

SCALE: 1.5X

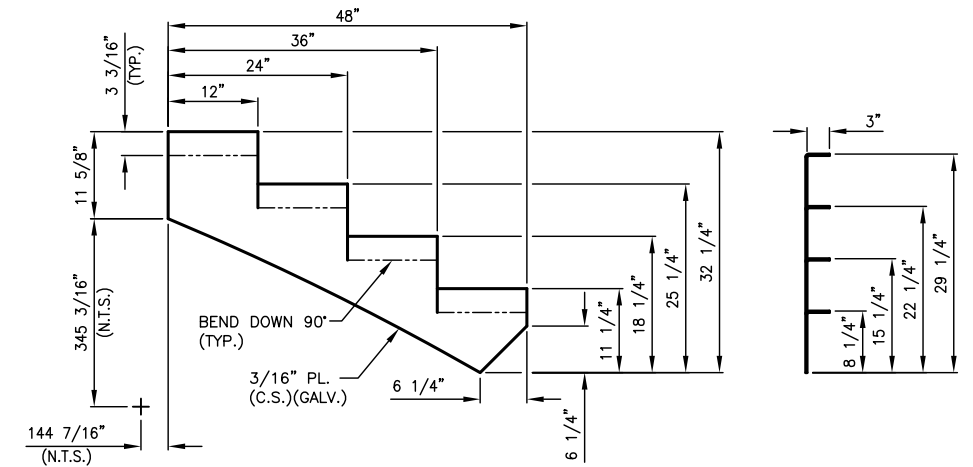
**ALL C.S. ITEMS TO BE HOT DIP GALV.**



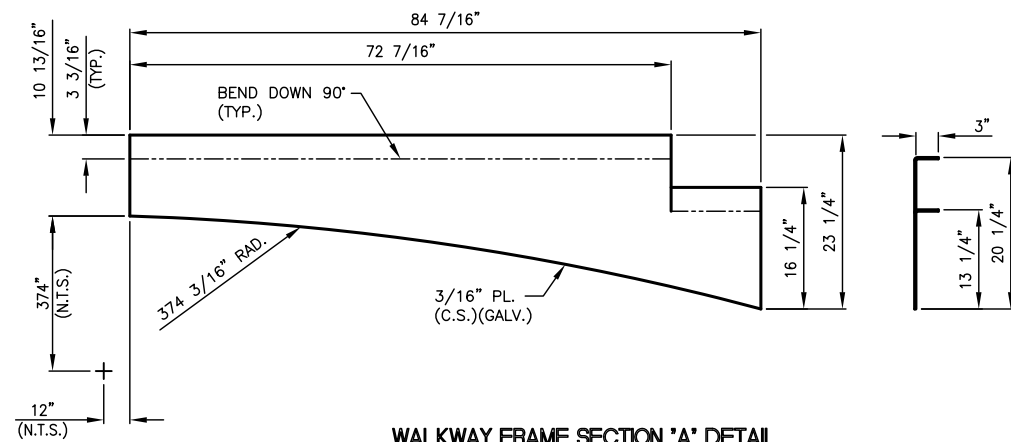
**SECTION H-H**  
WALKWAY DETAIL



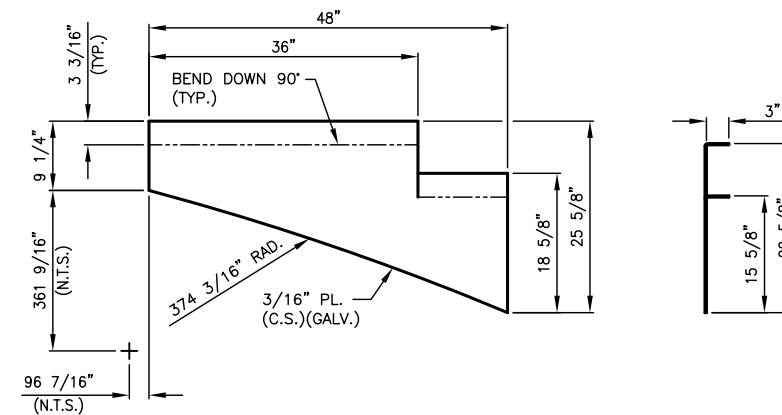
**SECTION J-J**  
SCALE: 2X



**WALKWAY FRAME SECTION 'C' DETAIL**  
(1) REQ'D AS SHOWN  
(1) REQ'D OPP. HAND

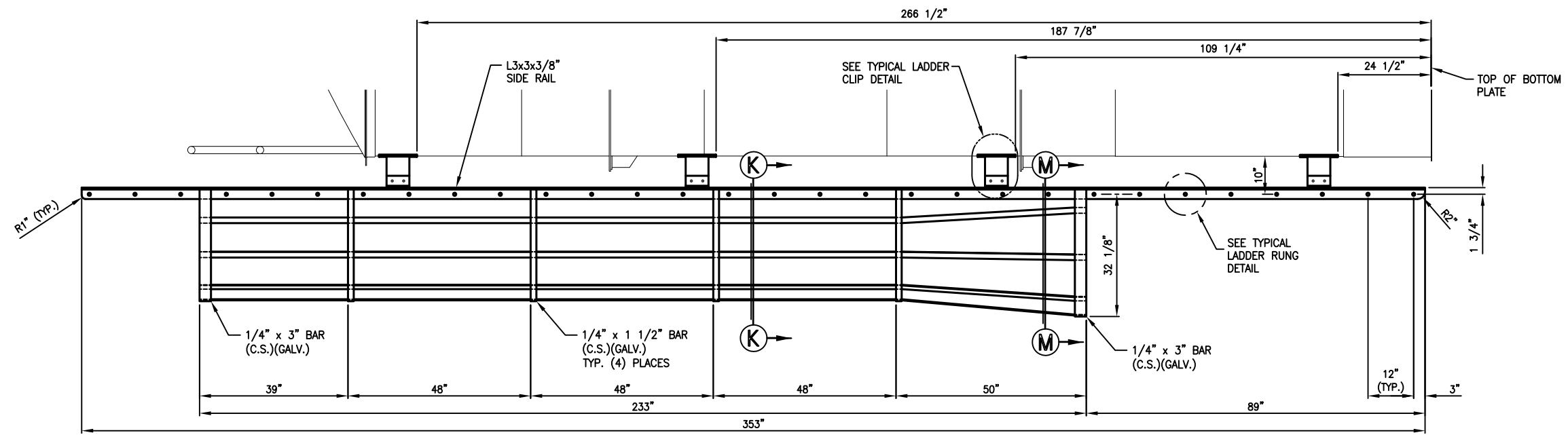


**WALKWAY FRAME SECTION 'A' DETAIL**  
(1) REQ'D AS SHOWN  
(1) REQ'D OPP. HAND

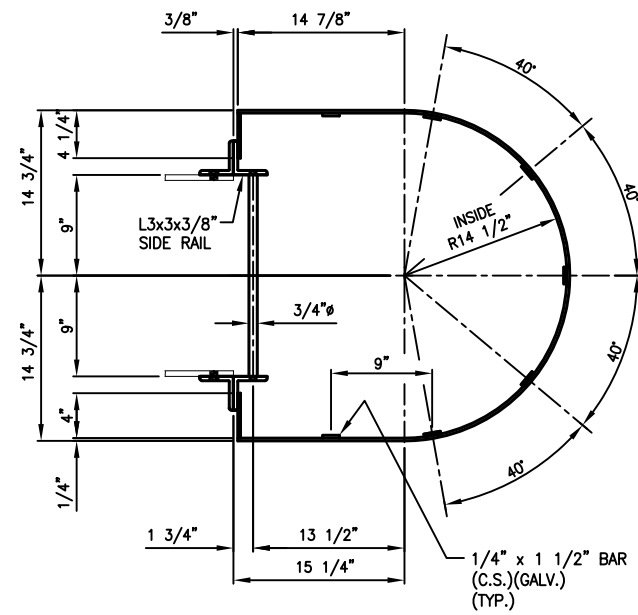


**WALKWAY FRAME SECTION 'B' DETAIL**  
(1) REQ'D AS SHOWN  
(1) REQ'D OPP. HAND

**ALL C.S. ITEMS TO BE HOT DIP GALV.**

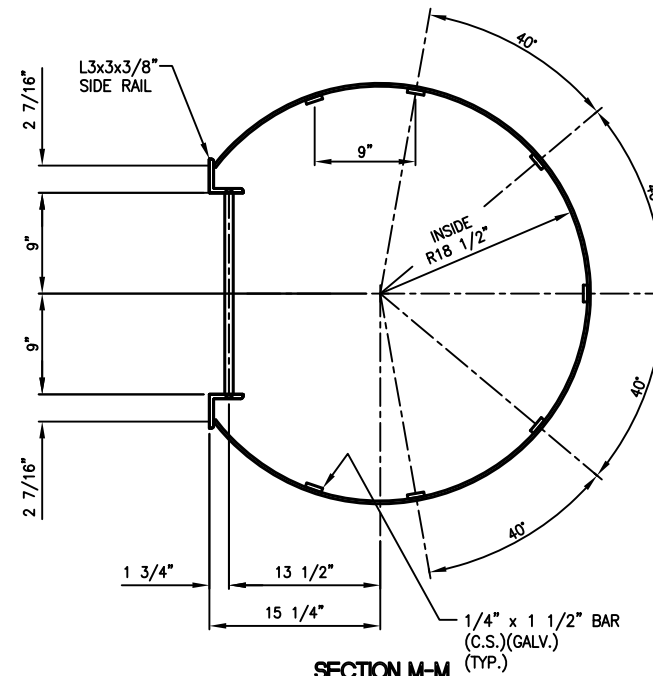


LADDER DETAIL



SECTION K-K

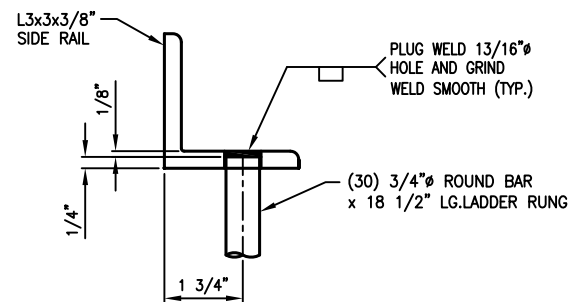
SCALE: 2X  
 (5) REQ'D AS SHOWN



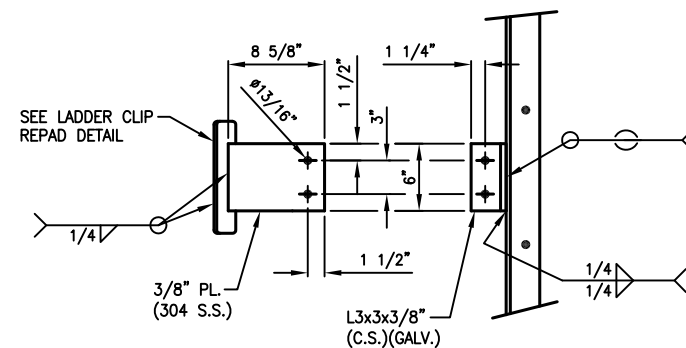
SECTION M-M

SCALE: 2X

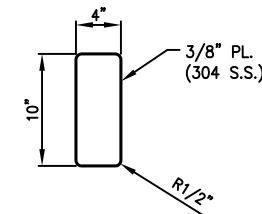
ALL C.S. ITEMS TO BE HOT DIP GALV.



TYPICAL LADDER RUNG DETAIL



TYPICAL LADDER CLIP DETAIL



LADDER CLIP REPAD DETAIL

SCALE: 2X  
 (8) REQ'D