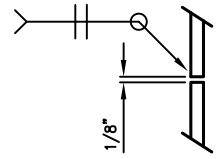
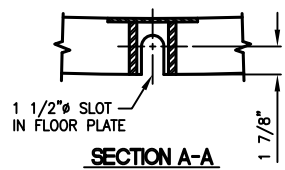


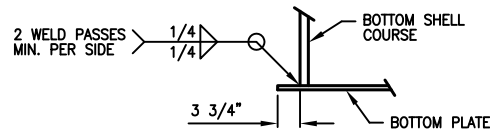
TOP ANGLE DETAIL



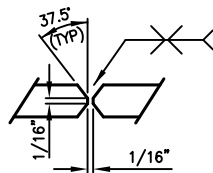
Cx DETAIL



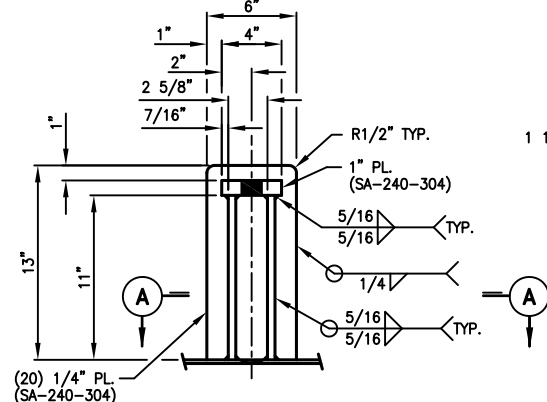
SECTION A-A



BOTTOM PLATE WELD DETAIL

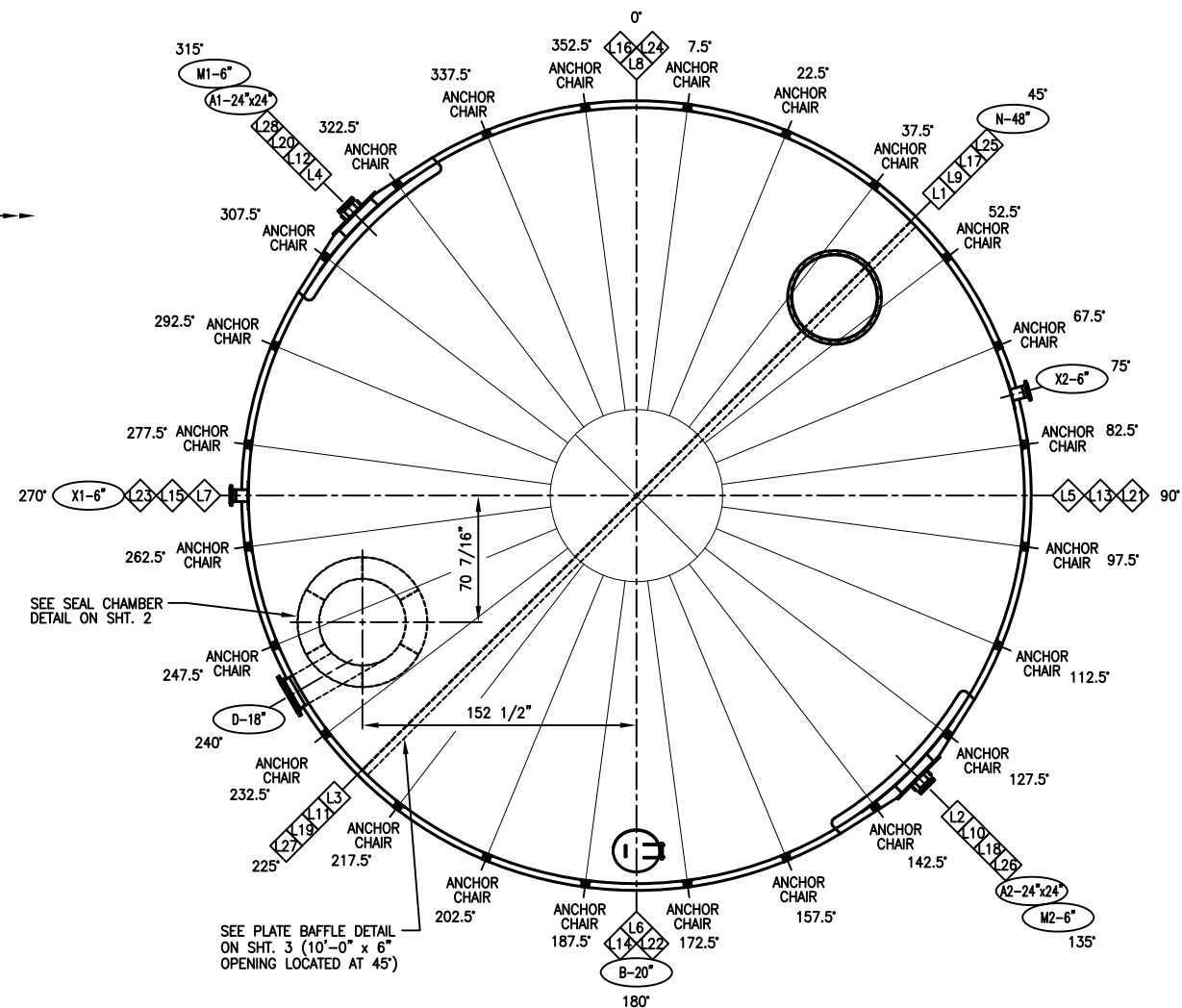
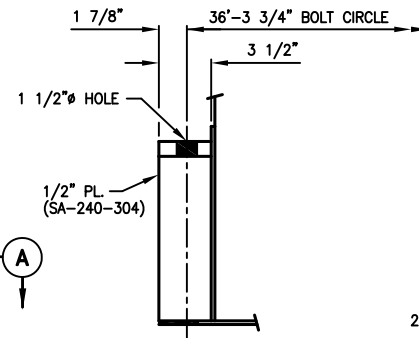


Lx DETAIL



ANCHOR CHAIR DETAIL
SCALE: 8x
(24 REQ'D)

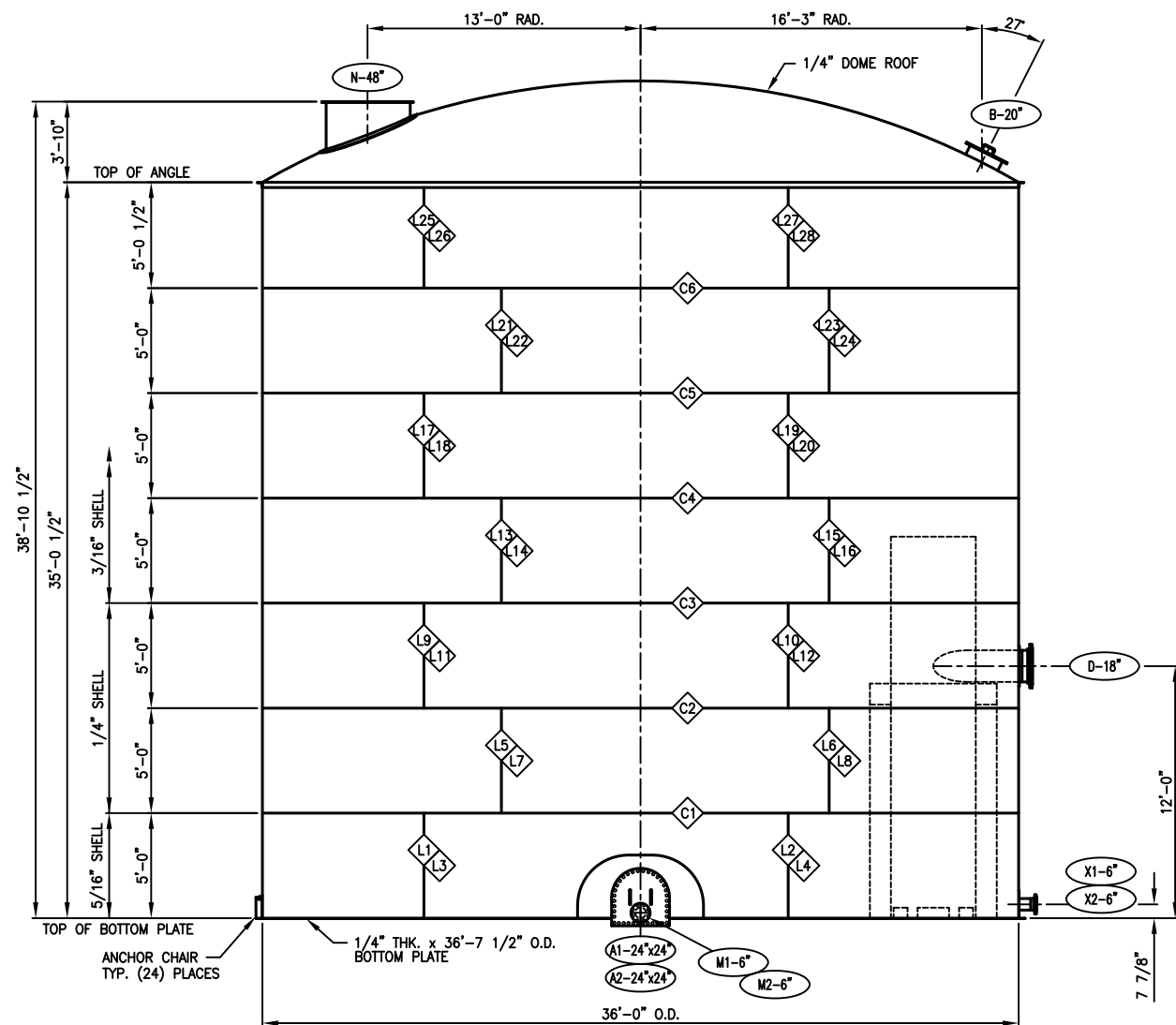
NOTE: CHAIRS LOCATED NEAR MANWAYS
A1 & A2 WILL UTILIZE THE MANWAY
REPAD AND WILL NOT REQUIRE REPADS



ORIENTATION VIEW

SEE SEAL CHAMBER
DETAIL ON SHT. 2

SEE PLATE BAFFLE DETAIL
ON SHT. 3 (10'-0" x 6"
OPENING LOCATED AT 45°)



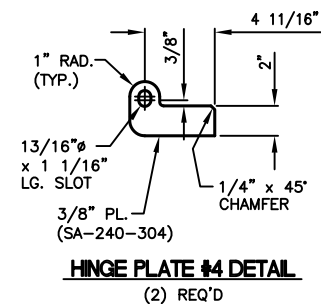
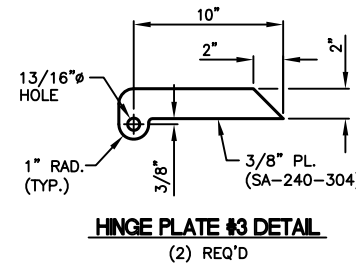
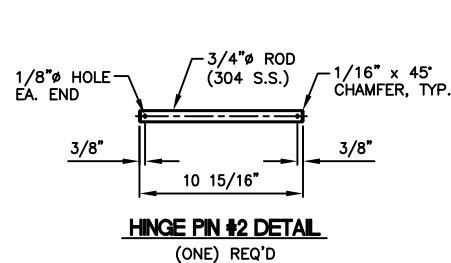
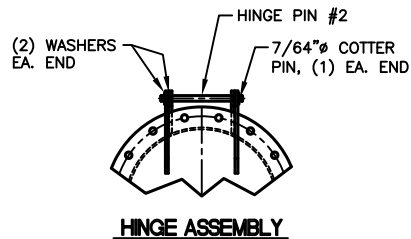
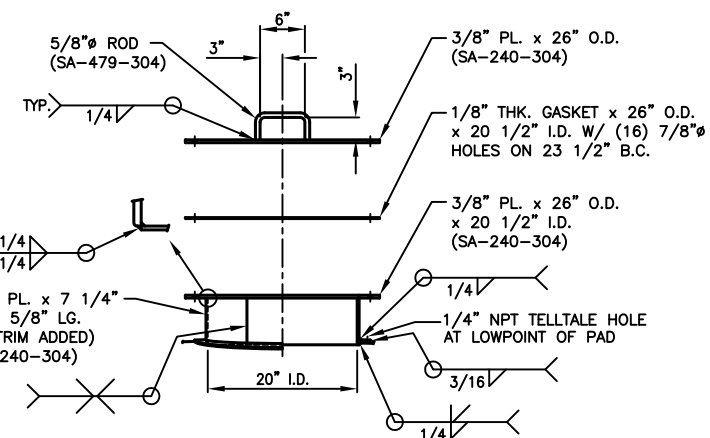
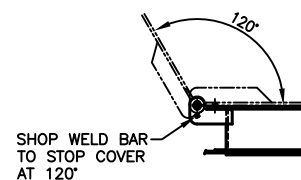
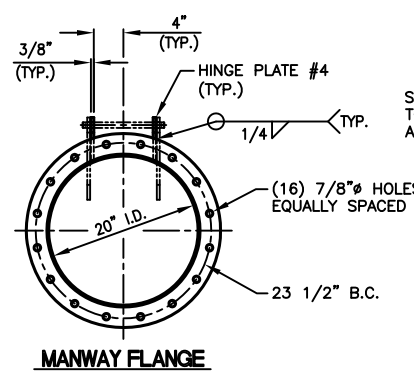
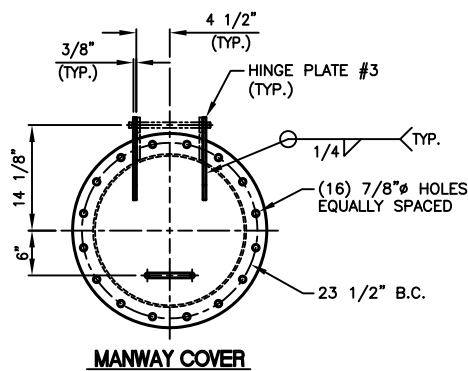
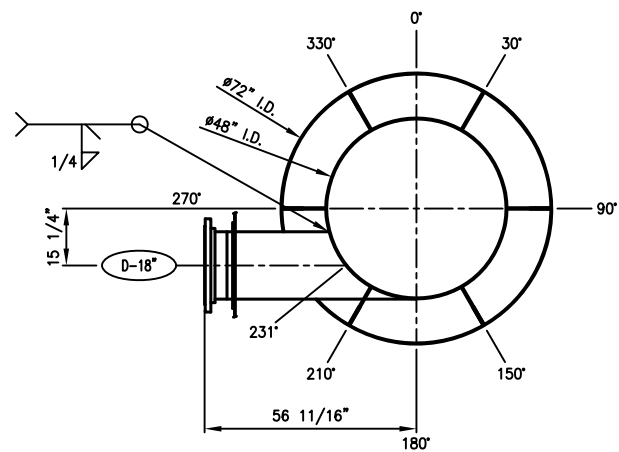
ELEVATION VIEW

GENERAL NOTES:

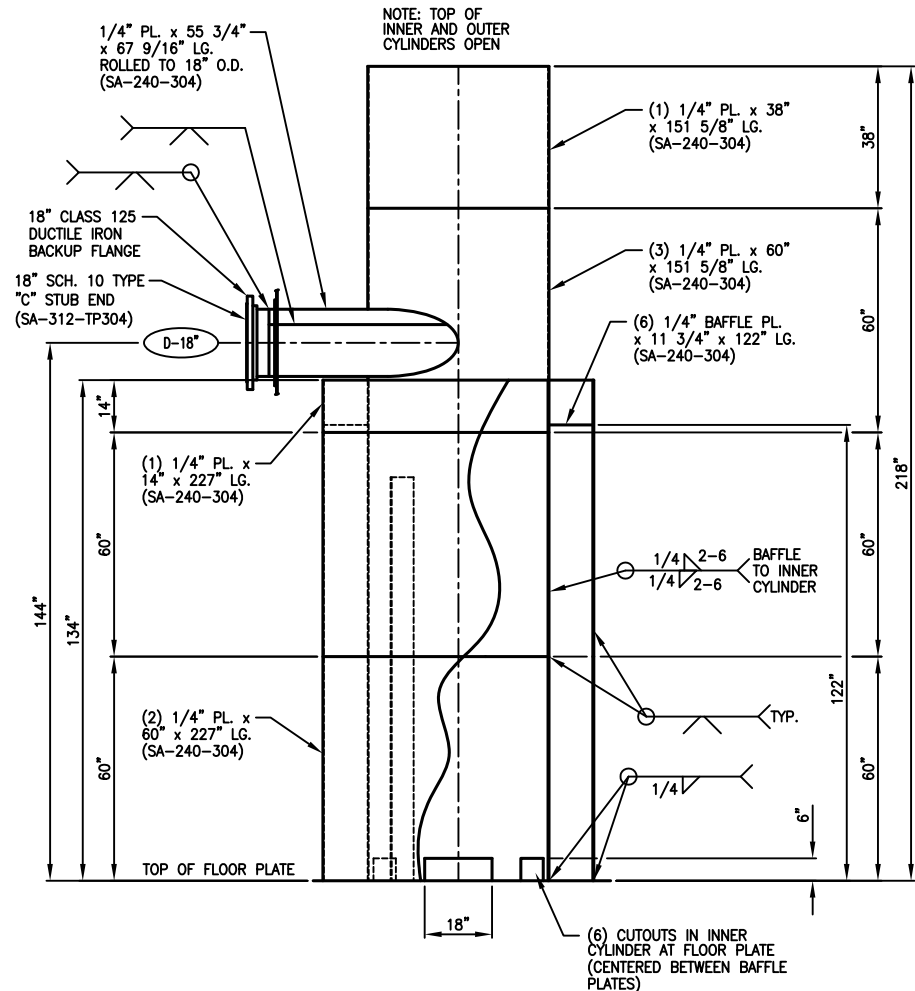
1. THIS VESSEL IS DESIGNED AND CONSTRUCTED PER API 650, 11TH EDITION.
2. ALL NOZZLE BOLT HOLES ARE TO STRADDLE THE MAJOR VESSEL CENTERLINES UNLESS SPECIFICALLY NOTED OTHERWISE.
3. ALL NOZZLE GASKET SURFACES REQUIRE A SERRATED SURFACE FINISH OF 125 TO 250 RMS.
4. SCRIBING OR CENTER PUNCHING OF WORKLINES IS PROHIBITED.
5. BREAK ALL SHARP EDGES.

THIS VESSEL CONFORMS TO API 650, 11TH EDITION AND UNDER NO CIRCUMSTANCES SHALL THE SAFETY DEVICES BE SET AT GREATER THAN THE MAXIMUM ALLOWABLE WORKING PRESSURE.

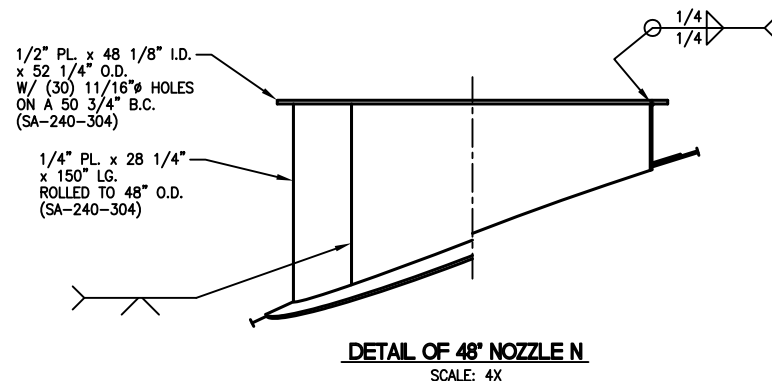
PRESSURE VESSEL DATA			
	VESSEL	JACKET	COIL
MAWP (PSIG) @ DESIGN TEMP (°F)	1.8/-0.025 @ 200	-	-
MDMT (° F) @ MAWP (PSIG)	-20 @ 1.8/-0.025	-	-
HYDROSTATIC TEST PRESSURE (PSIG)	2.25	-	-
CORROSION ALLOWANCE (IN.)	.063"	-	-
STRESS RELIEF	NONE	-	-
EMPTY/FULL WEIGHT OF SG 1.0	66,800#/2,395,000#	-	-
FULL VOLUME (GALLONS)	265,860	-	-
WIND DESIGN/SPEED	120 MPH	-	-
SEISMIC DESIGN	NONE	-	-
GENERAL DATA			
HEAD PLATE MAT'L, ASME	SA-240-304	-	-
SHELL PLATE MAT'L, ASME	SA-240-304	-	-
LAP JOINT STUB END, ASME	SA-403-WP304	-	-
BOLT MAT'L, ASME	SA-193-Gr. 8	-	-
NUT MAT'L, ASME	SA-194-Gr. 8	-	-
SERVICE GASKET MAT'L	-	-	-



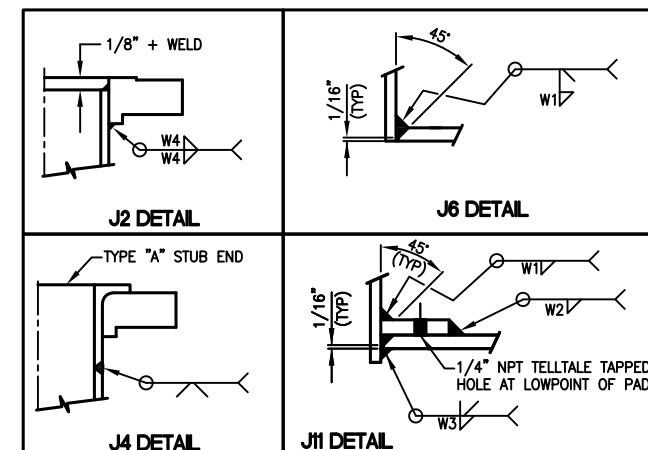
DETAIL OF 20" ROOF MANWAY B



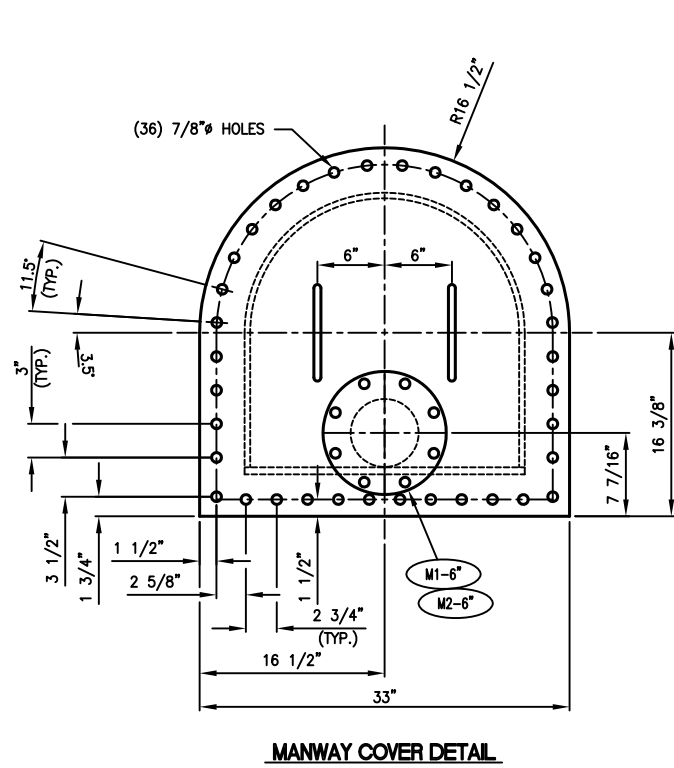
DETAIL OF 18" NOZZLE D & SEAL CHAMBER
SCALE: 2X



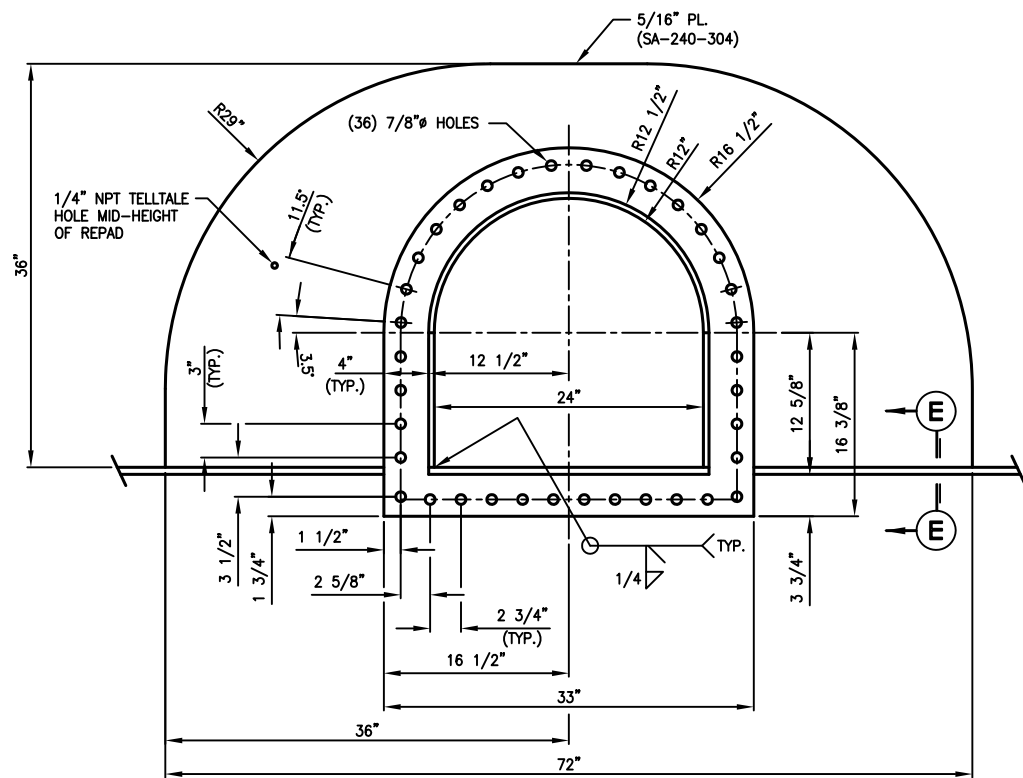
DETAIL OF 48" NOZZLE N
SCALE: 4X



MARK	QUAN	SIZE	MATERIAL	RATING	TYPE	MATERIAL	TH'KN	LENGTH	MATERIAL	TH'KN X WIDTH	MATERIAL	HH BORE	#BOLTS	#STUDS	DESCRIPTION	#NUTS	#SHIP	#SERV.	FLANGE	NECK	W1	W2	W3	W4	D1	EXTERNAL	INTERNAL	MARK	COMMENTS	
DRAIN	X1, X2	2	6"	SA-105	150#	LJSE	SA-312-TP304	SCH. 40	7 3/8"	SA-240-304	1/4" x 1 1/2"	-	-	-	-	-	-	-	J4	J11	1/4"	1/4"	1/4"	-	-	10 3/8"	1/4"	X1, X2	-	
FOAM BREAK	N	1	48"	SA-240-304	SEE DETAIL	SA-240-304	SEE DETAIL	SA-240-304	SEE DETAIL	SA-240-304	1/4" x 4"	-	-	-	-	-	-	-	J4	DET.	1/4"	1/4"	1/4"	-	-	SEE ELEV.	1/4"	N	-	
-	M1, M2	2	6"	SA-182-F304	150#	RFSO	SA-312-TP304	SCH. 40	6 1/8"	-	-	SA-182-F304	-	-	8	3/4" x 3 3/4"	16	-	1	J6	J2	1/4"	-	-	5/16"	6"	FLUSH	M1, M2	-	
INLET	D	1	18"	SA-105	SEE DETAIL	SA-240-304	SEE DETAIL	SA-240-304	SEE DETAIL	SA-240-304	1/2" x 2 1/2"	-	-	-	-	-	-	-	DET.	J11	1/4"	3/8"	1/4"	-	-	8"	DET.	D	-	
MANWAY	B	1	20"	SA-240-304	SEE DETAIL	SA-240-304	SEE DETAIL	SA-240-304	SEE DETAIL	SA-240-304	1/4" x 1 1/2"	-	-	16	-	3/4" x 2 3/4"	16	-	1	DET.	J11	1/4"	1/4"	1/4"	-	-	6"	1/4"	B	-
MANWAY	A1, A2	2	24x24	SA-240-304	SEE DETAIL	SA-240-304	SEE DETAIL	SA-240-304	SEE DETAIL	SA-240-304	SEE DETAIL	-	-	36	-	3/4" x 3"	36	-	1	DET.	DET.	-	-	-	-	DET.	1/4"	A1, A2	SEE DETAIL ON SHEET 3	

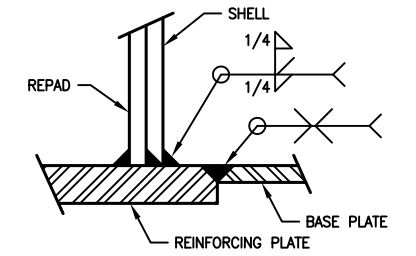
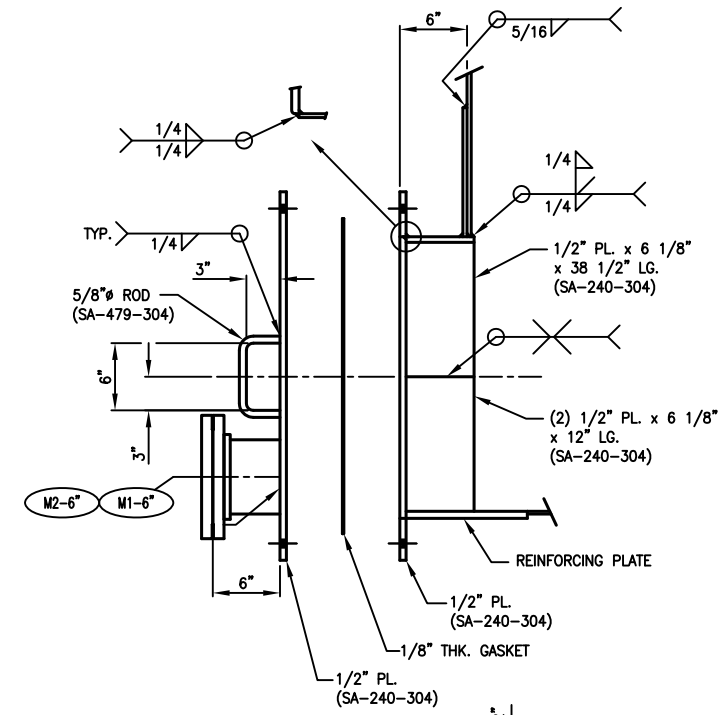


MANWAY COVER DETAIL

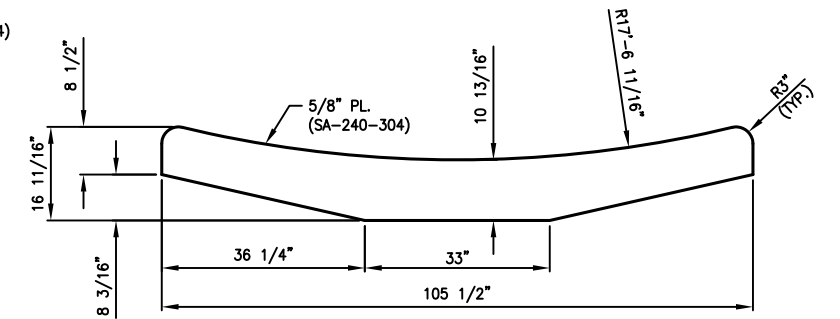


MANWAY FLANGE

DETAIL OF 24" x 24" SHELL MANWAYS A1 & A2

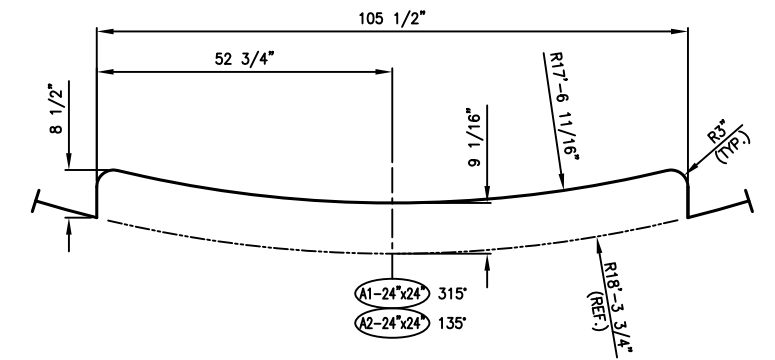


SECTION E-E



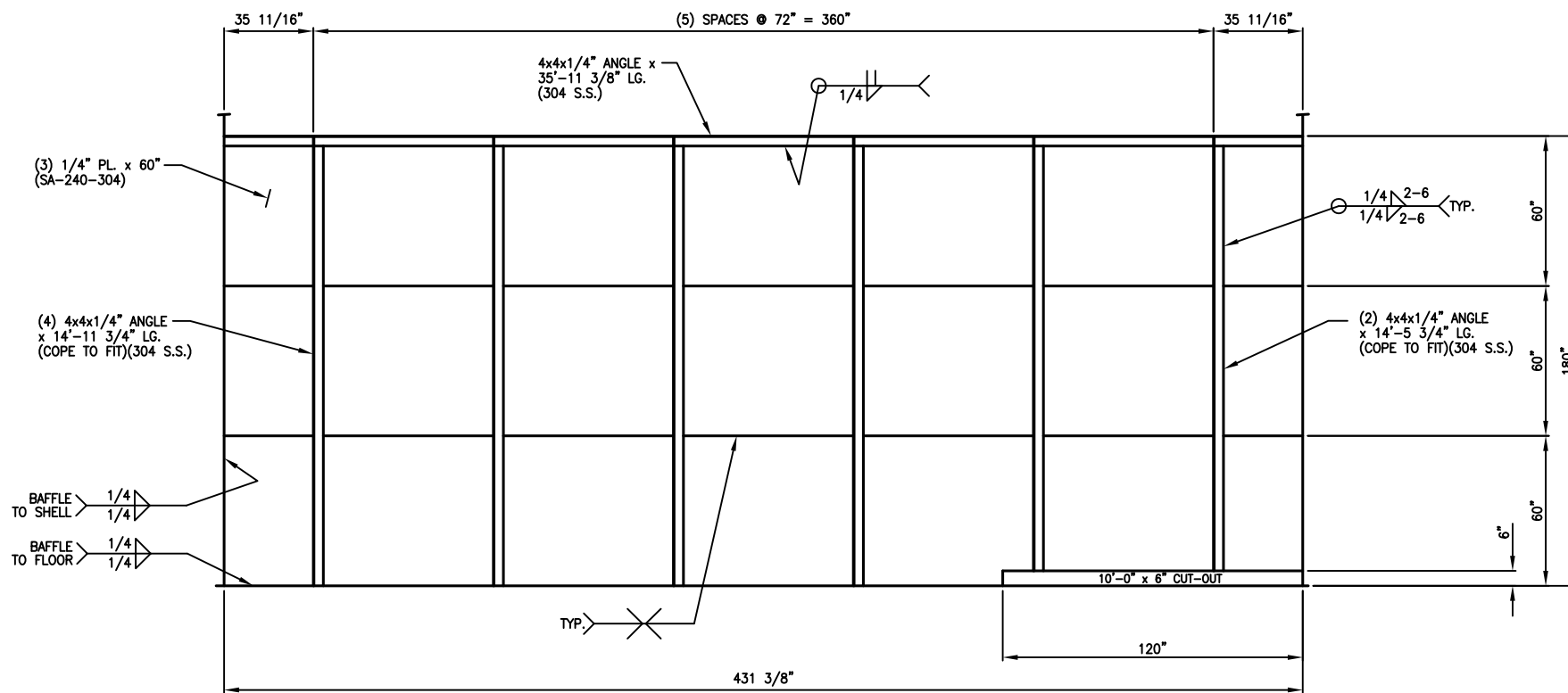
REINFORCING PLATE DETAIL

SCALE: 3X



BASE PLATE CUTOUT DETAIL

SCALE: 3X



BAFFLE PLATE DETAIL

SCALE: 1.5X