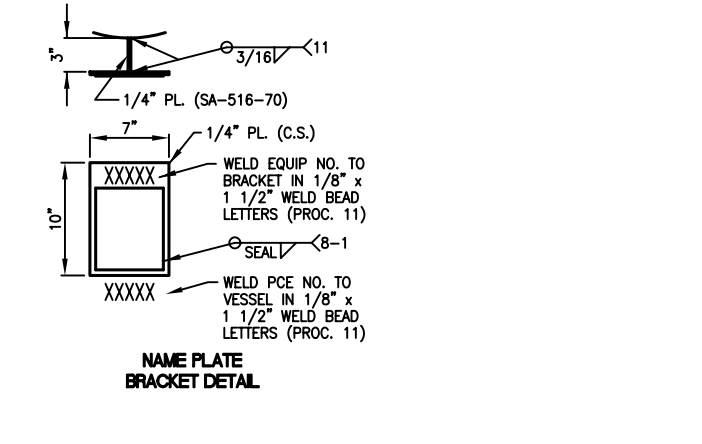
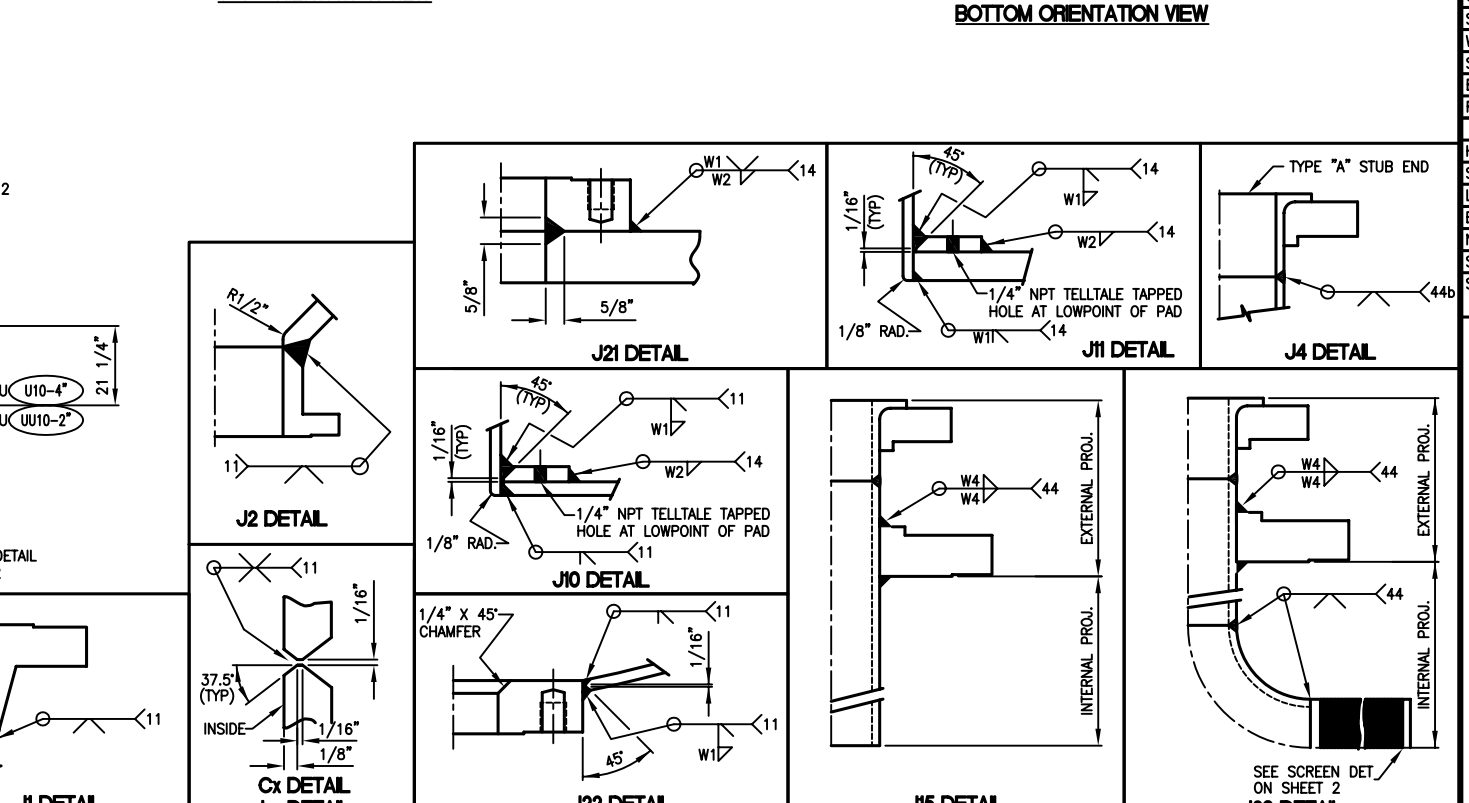


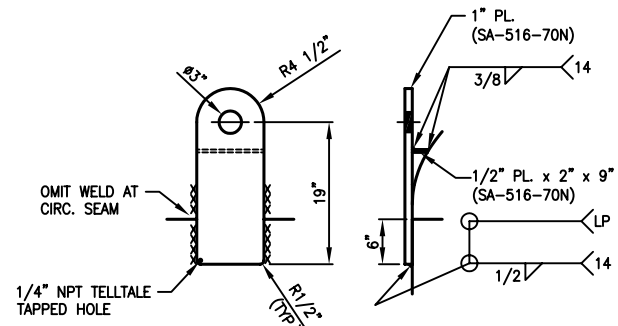
- GENERAL NOTES:
 1. THIS VESSEL IS DESIGNED, CONSTRUCTED, AND CODE STAMPED PER ASME SECT. VIII, DIV. 1, 2007 EDITION.
 2. ALL NOZZLE BOLT HOLES ARE TO STRADDLE THE MAJOR VESSEL CENTERLINES UNLESS SPECIFICALLY NOTED OTHERWISE.
 3. ALL NOZZLE GASKET SURFACES REQUIRE A SERRATED SURFACE FINISH OF 125 TO 250 RMS.
 4. SCRIBING OR CENTER PUNCHING OF WORK LINES IS PROHIBITED.
 5. BREAK ALL SHARP EDGES.
 6. ALL C.S. IS TO BE SA-36(MIN) UNLESS NOTED OTHERWISE.

THIS VESSEL CONFORMS TO THE LATEST ASME UNFIRED PRESSURE VESSEL CODE AND UNDER NO CIRCUMSTANCES SHALL THE SAFETY DEVICES BE SET AT GREATER THAN THE MAXIMUM ALLOWABLE WORKING PRESSURE.

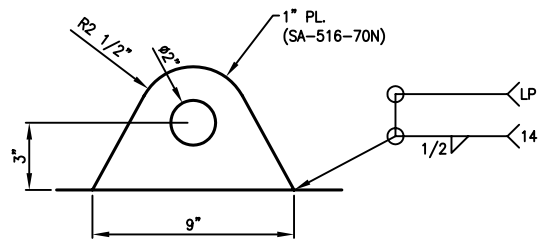
PRESSURE VESSEL DATA			
	VESSEL	JACKET	COIL
MAMP (PSIG) @ DESIGN TEMP (°F)	140/FV @ 500	-	-
MDMT (°F) @ MAMP (PSIG)	-20 @ 140/FV	-	-
HYDROSTATIC TEST PRESSURE (PSIG)	198	-	-
CORROSION ALLOWANCE (IN.)	.063	-	-
RADIOGRAPHY/MEETS UW-11(a)(5)(b)	RT-4/YES	-	-
STRESS RELIEF	NONE	-	-
STRENGTH LIMITING VESSEL PART	SHELL	-	-
WIND DESIGN	-	-	-
SEISMIC DESIGN	-	-	-
EMPTY/FULL WEIGHT OF SG 1.15	16,925# / 86,285#	-	-
FULL VOLUME (GALLONS)	7,267	-	-
GENERAL DATA			
HEAD PLATE MAT'L, ASME	SA-516-70N	-	-
SHELL PLATE MAT'L, ASME	SA-516-70N	-	-
LJ STUB ENDS & FITTINGS, ASME	SB-366-WPH10276	-	-
BOLT MAT'L, ASME	SA-193-B7 (XYLAN 1014 FLUOROPOLYMER COATED)	-	-
NUT MAT'L, ASME	SA-194-2H (XYLAN 1014 FLUOROPOLYMER COATED)	-	-
SHIPPING GASKET MAT'L	-	-	-
SERVICE GASKET MAT'L	GORE UNIVERSAL PIPE GASKET STYLE 800	-	-



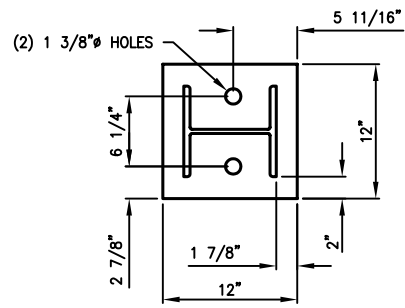
SPARE	V2	1	6"	SA-105	150#	RFWN	SA-106-B	SCH. 80	9 13/16"	SA-516-70N	3/8" x 1 1/2"	SA-105	-	-	8	3/4" x 3 3/4"	16	-	2	J1	J10	3/8"	3/8"	-	-	-	SEE ELEV.	FLUSH	V2	-						
	V1	1	4"	SA-105	150#	RFWN	SA-106-B	SCH. 80	9 3/4"	SA-516-70	1/4" x 1 1/2"	-	-	-	-	-	-	-	2	J1	J10	1/4"	1/4"	-	-	-	SEE ELEV.	FLUSH	V1	-						
	U1-U10	10	2"	SA-105	150#	LJSE	SB-622-N10276	SCH. 40	4 15/16"	-	-	-	-	-	-	-	-	-	2	J4	J20	-	-	-	1/4"	-	6"	4 3/16"	U1-U10	W/90° LR ELBOW & TYPE A LJSE						
	U1-U10	10	4"	SA-105	150#	RF STUDDING OUTLET	-	-	-	-	-	SB-564-N10276	4" x 2"	8	-	SEE COMMENTS	-	-	2	-	J22	3/8"	-	-	-	-	1"	FLUSH	U1-U10	5/8" x 2" HEAVY HEX BOLTS						
	S1-S2	2	4"	SA-105	150#	RFWN	SA-106-B	SCH. 80	3 3/16"	SA-516-70	1/4" x 1 1/2"	SA-105	-	-	4	5/8" x 3 1/2"	8	-	2	J1	J10	3/8"	1/4"	-	-	-	5 1/2"	FLUSH	S1-S2	-						
	R	1	4"	SA-105	150#	RFWN	SA-106-B	SCH. 80	9 3/4"	SA-516-70N	1/2" x 2"	-	-	-	-	-	-	-	2	J1	J10	5/16"	5/16"	-	-	-	SEE ELEV.	FLUSH	R	-						
	M2	1	24"	SA-105	150#	RFWN	SA-106-B	SCH. XH	3 3/4"	SA-516-70N	1/2" x 5"	SA-105	-	20	-	SEE COMMENTS	20	-	2	J1	J10	3/8"	5/16"	-	-	-	SEE ELEV.	FLUSH	M2	1 1/4" x 5 3/4" HEAVY HEX BOLTS						
	M1	1	24"	SA-105	150#	RFWN	SA-106-B	SCH. XH	4 5/8"	SA-516-70N	3/4" x 4"	SA-105	-	20	-	SEE COMMENTS	20	-	2	J1	J10	3/8"	3/8"	-	-	-	8 1/2"	FLUSH	M1	1 1/4" x 5 3/4" HEAVY HEX BOLTS						
	L	1	4"	SA-105	150#	RFWN	SA-106-B	SCH. 80	9 3/4"	SA-516-70	1/4" x 1 1/2"	-	-	-	-	-	-	-	2	J1	J10	1/4"	1/4"	-	-	-	SEE ELEV.	FLUSH	L	-						
	C2	1	4"	SA-105	150#	RFWN	SA-106-B	SCH. 80	9 3/4"	SA-516-70	1/4" x 1 1/2"	SA-105	-	-	8	5/8" x 3 1/2"	16	-	2	J1	J10	1/4"	1/4"	-	-	-	SEE ELEV.	FLUSH	C2	-						
	C1	1	4"	SA-105	150#	RFWN	SA-106-B	SCH. 80	9 3/4"	SA-516-70	1/4" x 1 1/2"	-	-	-	-	-	-	-	2	J1	J10	1/4"	1/4"	-	-	-	SEE ELEV.	FLUSH	C1	-						
	B	1	4"	SA-105	150#	LJSE	SB-619-N10276	SCH. 40	8 3/16"	-	-	-	-	-	-	-	-	-	2	J4	J15	-	-	-	1/4"	-	6"	5 9/16"	B	W/TYP A LJSE						
	BB	1	6"	SA-105	150#	RFLWN	SA-105	.88"	4"	-	-	-	-	-	-	-	-	-	2	J2	-	-	-	-	-	-	SEE ELEV.	FLUSH	BB	-						
	A3	1	6"	SA-105	150#	RFWN	SA-106-B	SCH. 80	9 13/16"	SA-516-70N	3/8" x 1 1/2"	-	-	-	-	-	-	-	2	J1	J10	3/8"	3/8"	-	-	-	SEE ELEV.	FLUSH	A3	-						
	A2	1	4"	SA-105	150#	STUDDING	OUTLET	-	-	-	-	-	-	-	-	-	-	-	2	-	J21	5/8"	3/8"	-	-	-	-	-	-	A2	-					
	A1	1	4"	SA-105	150#	RFWN	SA-106-B	SCH. 80	9 3/4"	SA-516-70	1/4" x 1 1/2"	-	-	-	-	-	-	-	2	J1	J10	1/4"	1/4"	-	-	-	SEE ELEV.	FLUSH	A1	-						
	MARK	QUAN	SIZE	MATERIAL	RATING	TYPE	MATERIAL	TH'KN	LENGTH	MATERIAL	TH'KN x WIDTH	MATERIAL	HH	BORE	#BOLTS	#STUDS	DESCRIPTION	#NUTS	#SHIP	#SERV.	FLANGE	NECK	W1	W2	W3	W4	L1	EXTERNAL	INTERNAL	MARK	COMMENTS					
	FLANGE									REPAD																										



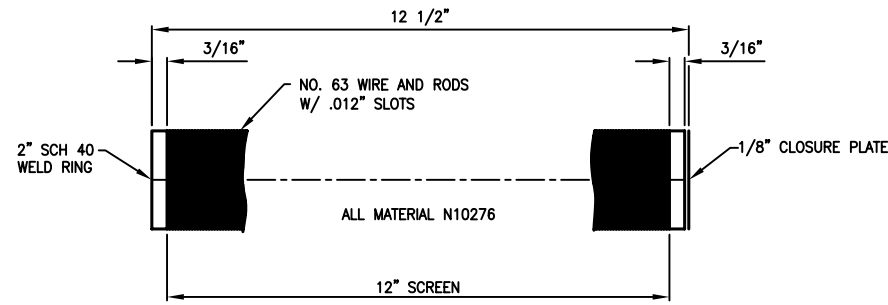
LIFT LUG DETAIL
SCALE: 2x
(2) REQUIRED



TILING LUG DETAIL
SCALE: 2x
(1) REQUIRED

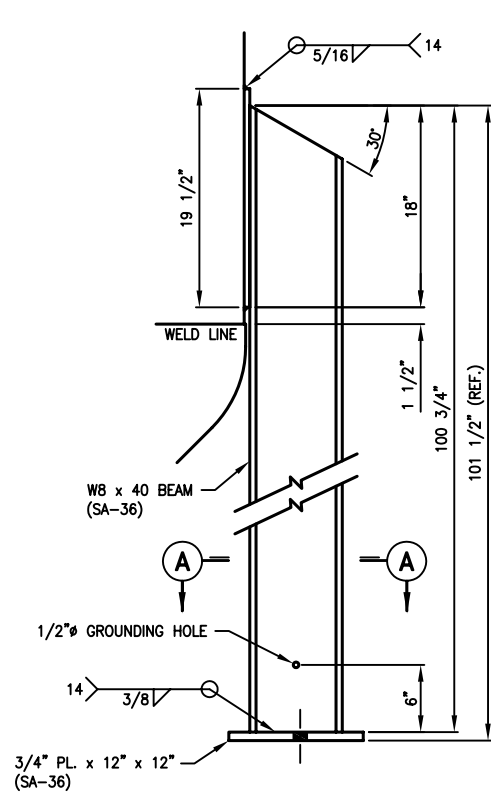


SECTION A-A



JOHNSON SCREEN DETAIL
SCALE: NONE
(10) REQUIRED PER UNIT

NOTE: BOX THE ASSEMBLED SCREEN NOZZLES FOR ALL UNITS IN ONE BOX. SHIP ASSEMBLED SCREENS WITH LAST VESSEL SHIPPED.



SUPPORT LEG DETAIL
SCALE: 3x
(4) REQUIRED

