

UPPER SECTION ELEVATION VIEW

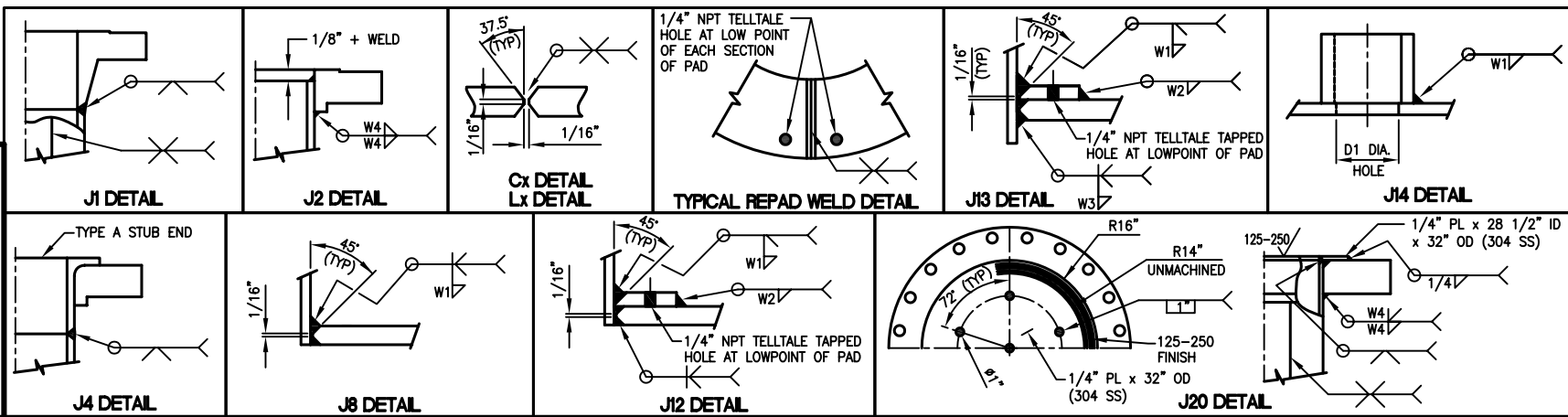
SECTION JOINT WELD DETAIL

UPPER SECTION ORIENTATION VIEW

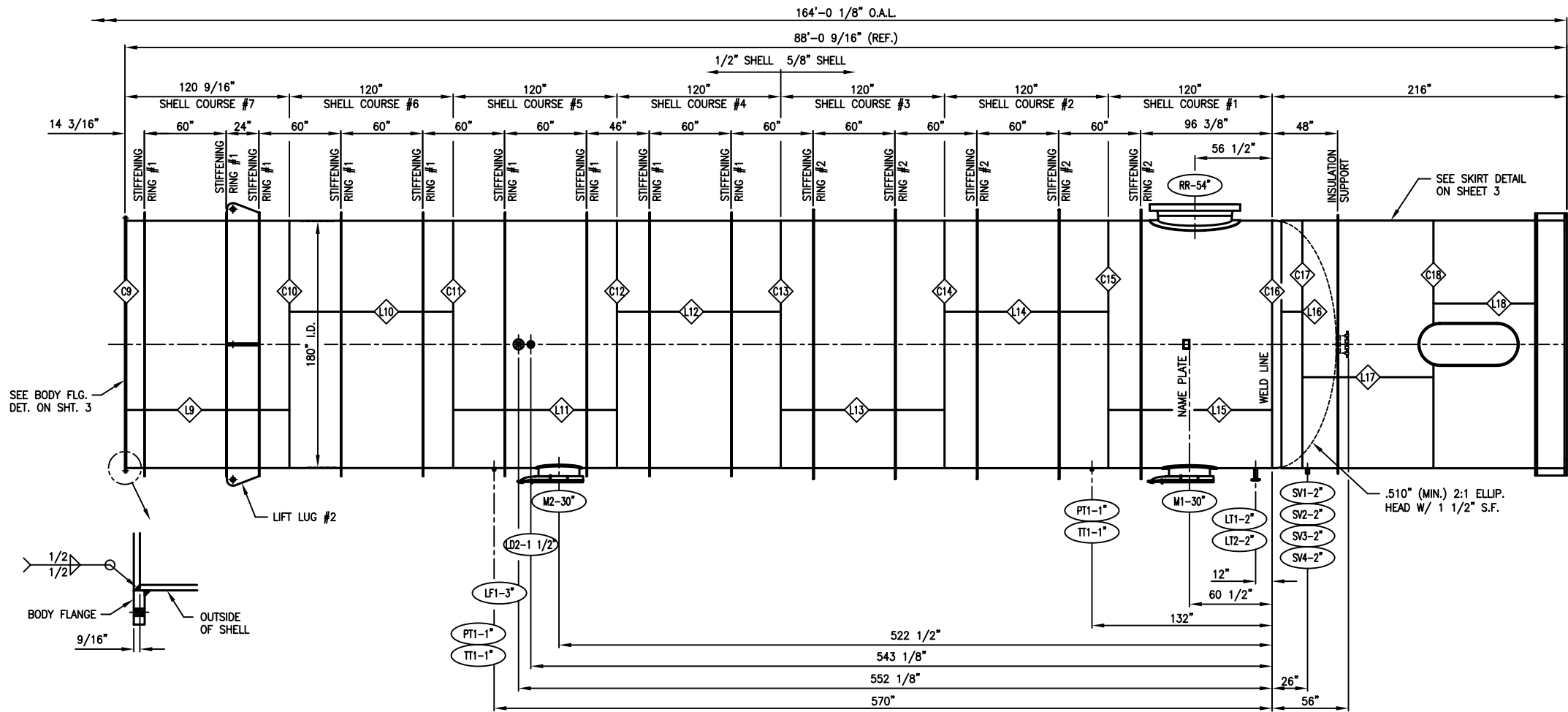
THIS VESSEL CONFORMS TO THE LATEST ASME UNFIRE PRESSURE VESSEL CODE AND UNDER NO CIRCUMSTANCES SHALL THE SAFETY DEVICES BE SET AT GREATER THAN THE MAXIMUM ALLOWABLE WORKING PRESSURE.

PRESSURE VESSEL DATA			
	VESSEL	JACKET	COIL
MAWP (PSIG) @ DESIGN TEMP (°F)	15/FV @ 500	-	-
MDMT (°F) @ MAWP (PSIG)	-20 @ 15/FV	-	-
HYDROSTATIC TEST PRESSURE (PSIG)	22	-	-
CORROSION ALLOWANCE (IN.)	NONE	-	-
RADIOGRAPHY/MEETS UW-11(a)(5)(b)	SPOT/NO	-	-
STRESS RELIEF	NONE	-	-
STRENGTH LIMITING VESSEL PART	DESIGN	-	-
EMPTY/FULL WEIGHT OF SG 1.05	236,855# / 1,960,905#	-	-
FULL VOLUME (GALLONS)	194,158	-	-
WIND DESIGN/SPEED	IBC 2003 - 90 MPH	-	-
SEISMIC DESIGN	IBC 2003	-	-
GENERAL DATA			
HEAD PLATE MAT'L, ASME	SA-240-304	-	-
SHELL PLATE MAT'L, ASME	SA-240-304	-	-
TUBE SHEET MAT'L, ASME	-	-	-
BOLT MAT'L, ASME	SA-193-B7	-	-
NUT MAT'L, ASME	SA-194-2H	-	-
SHIPPING GASKET MAT'L	-	-	-
SERVICE GASKET MAT'L	GORE UNIVERSAL PIPE GASKET STYLE 800	-	-

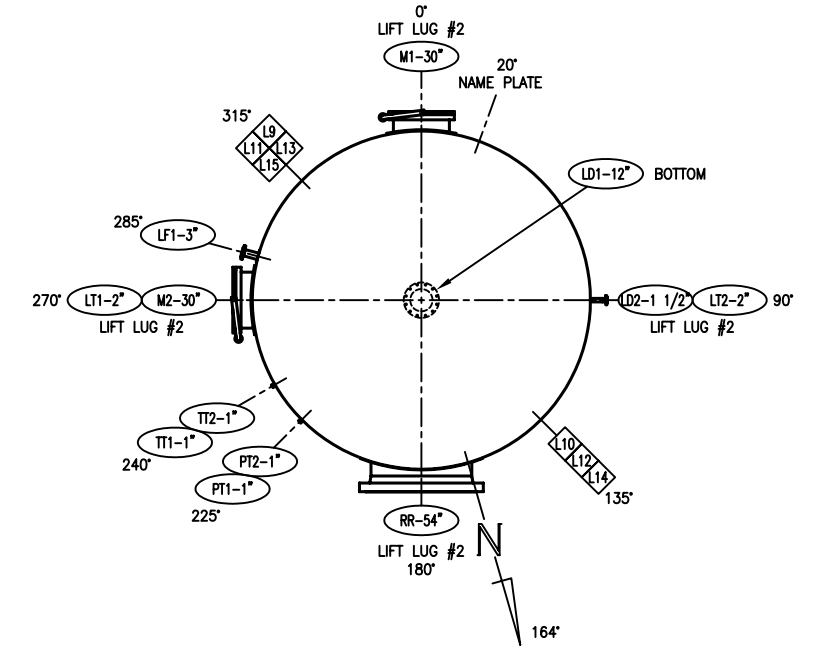
- GENERAL NOTES:
- THIS VESSEL IS DESIGNED, CONSTRUCTED, AND CODE STAMPED PER ASME SECT. VIII, DIV. 1, 2004 EDITION, 2006 ADDENDA.
 - ALL NOZZLE BOLT HOLES ARE TO STRADDLE THE MAJOR VESSEL CENTERLINES UNLESS SPECIFICALLY NOTED OTHERWISE.
 - ALL NOZZLE GASKET SURFACES REQUIRE A SERRATED SURFACE FINISH OF 125 TO 250 RMS.
 - SCRIBING OR CENTER PUNCHING OF WORKLINES IS PROHIBITED.
 - BREAK ALL SHARP EDGES.
 - ALL C.S. IS TO BE SA-36 (MIN.) UNLESS NOTED OTHERWISE.
 - BLAST AND PRIME ALL EXTERIOR C.S. SURFACES WITH ONE COAT OF STD. SHOP PRIMER.
 - COMPRESSED AIR/SOAP SUDS TEST EACH REINFORCING PAD AND PLUG ALL 1/4" NPT TELLTALE HOLES WITH CORNING 732 RTV PRIOR TO SHIPPING.



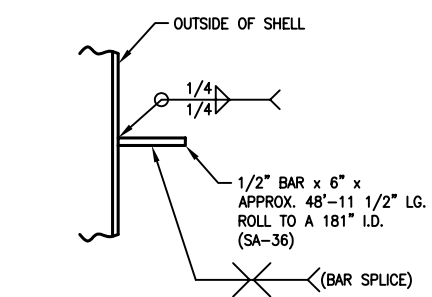
MARK	QUAN	SIZE	MATERIAL	RATING	TYPE	MATERIAL	TH'KN	LENGTH	MATERIAL	TH'KN X WIDTH	HH BORE	# BOLTS	# STUDS	DESCRIPTION	# NUTS	# SHIP	# SERV.	FLANGE	NECK	W1	W2	W3	W4	D1	EXTERNAL	INTERNAL	MARK	COMMENTS		
VAPOR	VD	1	54"	SA-182-F304	150#	RFWN	SA-240-304	SEE COMMENT	SA-516-70	1/2" x 13"	-	-	-	-	-	-	-	-	J1	J12	3/8"	3/8"	-	-	-	SEE ELEV.	FLUSH	VD	3/4" PL. x 4 1/2" x 167 1/4"	
TEMP	TT1-TT5	5	1"	SA-182-F304	3000#	FULL CPLG	-	-	-	-	-	-	-	-	-	-	-	-	-	J8	1/4"	-	-	-	-	-	FLUSH	TT1-TT5	-	
SKIRT VENT	SV1-SV4	4	2"	-	-	-	SA-106-B	SCH. 80	4"	-	-	-	-	-	-	-	-	-	-	J14	1/4"	-	-	-	1 7/8"	4"	-	SV1-SV4	-	
RETURN	RR	1	54"	SA-182-F304	150#	RFWN	SA-240-304	SEE COMMENT	SA-516-70	3/8" x 6"	-	-	-	-	-	-	-	-	-	J1	J12	3/8"	5/16"	-	-	12"	FLUSH	RR	3/4" PL. x 8 1/2" x 167 1/4"	
-	RF1	1	4"	SA-182-F304	150#	RFSO	-	-	-	-	-	-	-	-	-	-	-	-	-	J2	-	-	-	-	-	6"	RF1	-		
FEED	RF	1	4"	SA-105	150#	LJSE	SA-312-TP304	STD. WT.	12 1/8"	SA-516-70	3/16" x 1 1/2"	-	-	-	-	-	-	-	-	J4	J13	3/16"	3/16"	3/16"	-	-	9"	5 5/8"	RF	W/ 4" STD. WT. TYPE A S.E. (SA-403-304)
PRESSURE	PT1-PT5	5	1"	SA-182-F304	3000#	FULL CPLG	-	-	-	-	-	-	-	-	-	-	-	-	-	J8	1/4"	-	-	-	-	-	FLUSH	PT1-PT5	-	
MANWAY	M2-M5	4	30"	SA-516-70N	SEE DETAIL PG. 3	SA-240-304	SEE COMMENT	SA-516-70	3/8" x 2"	SA-516-70N	SEE DET.	-	24	7/8" x 7 1/4"	48	-	1	J20	J12	3/8"	5/16"	-	3/8"	-	9"	FLUSH	M2-M5	3/4" PL. x 10 3/4" x 93 1/16"		
MANWAY	M1	1	30"	SA-516-70N	SEE DETAIL PG. 3	SA-240-304	SEE COMMENT	SA-516-70	3/8" x 3 1/2"	SA-516-70N	SEE DET.	-	24	7/8" x 7 1/4"	48	-	1	J20	J12	3/8"	5/16"	-	3/8"	-	9"	FLUSH	M1	3/4" PL. x 10 3/4" x 93 1/16"		
DRAW	LT1, LT2	2	2"	SA-105	150#	LJSE	SA-312-TP304	STD. WT.	7 1/4"	-	-	-	-	-	-	-	-	-	-	J4	J8	3/16"	-	-	-	9"	FLUSH	LT1, LT2	W/ 2" STD. WT. TYPE A S.E. (SA-403-304)	
LEVEL	LF1-LF3	3	3"	SA-105	150#	LJSE	SA-312-TP304	STD. WT.	7 1/4"	SA-516-70	3/16" x 1 1/2"	-	-	-	-	-	-	-	-	J4	J12	3/16"	3/16"	-	-	9"	FLUSH	LF1-LF3	W/ 3" STD. WT. TYPE A S.E. (SA-403-304)	
LQ. DRAW	LD2-LD4	3	1.5"	SA-105	150#	LJSE	SA-312-TP304	STD. WT.	7 3/4"	-	-	-	-	-	-	-	-	-	-	J4	J8	3/16"	-	-	-	9"	FLUSH	LD2-LD4	W/ 1 1/2" STD. WT. TYPE A S.E. (SA-403-304)	
LQ. DRAW	LD1	1	12"	SA-105	150#	LJSE	SA-312-TP304	STD. WT.	4 5/8"	SA-516-70	3/8" x 3"	-	-	-	-	-	-	-	-	J4	J12	3/8"	5/16"	-	-	SEE ELEV.	FLUSH	LD1	W/ 12" STD. WT. TYPE A S.E. (SA-403-304)	
-	FF1	1	3"	SA-182-F304	150#	RFSO	-	-	-	-	-	-	-	-	-	-	-	-	-	J2	-	-	-	-	-	6"	FF1	-		
FEED	FF	1	3"	SA-105	150#	LJSE	SA-312-TP304	STD. WT.	12 5/8"	SA-516-70	3/16" x 1 1/2"	-	-	-	-	-	-	-	-	J4	J13	3/16"	3/16"	3/16"	-	9"	5 5/8"	FF	W/ 3" STD. WT. TYPE A S.E. (SA-403-304)	



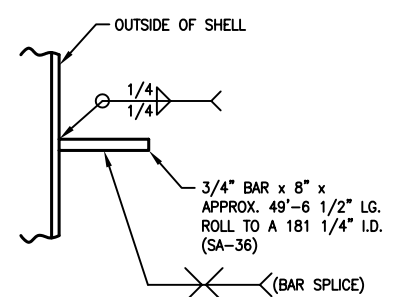
LOWER SECTION ELEVATION VIEW



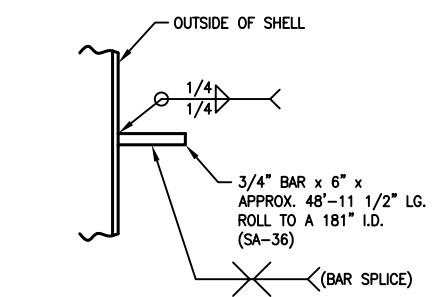
LOWER SECTION ORIENTATION VIEW



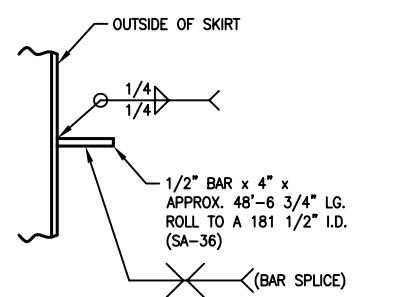
STIFFENING RING #1 DETAIL
(23 REQ'D)



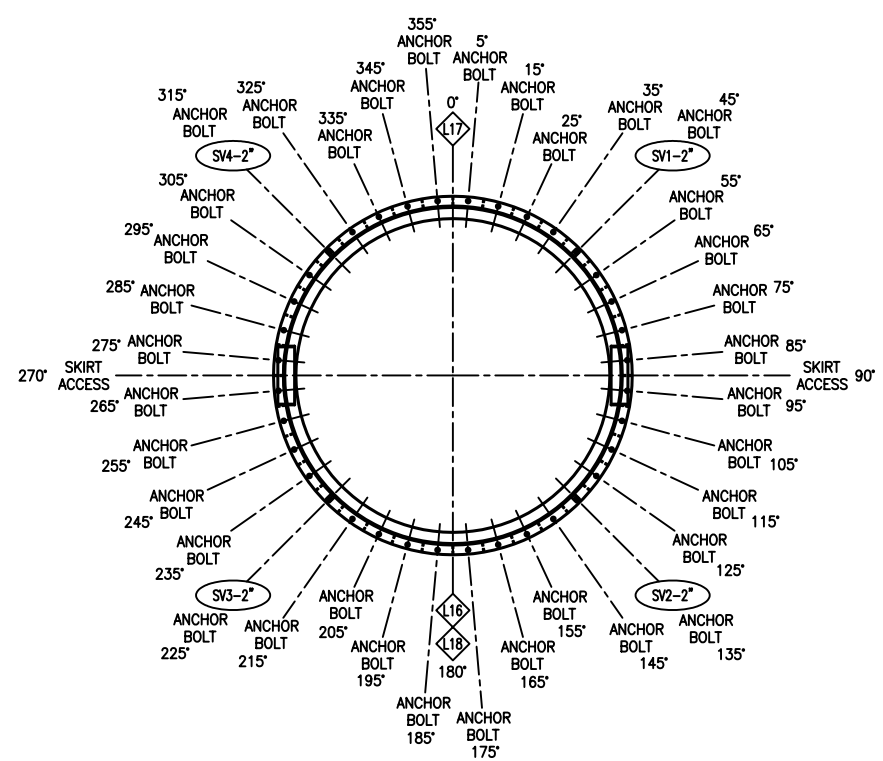
STIFFENING RING #2 DETAIL
(5 REQ'D)



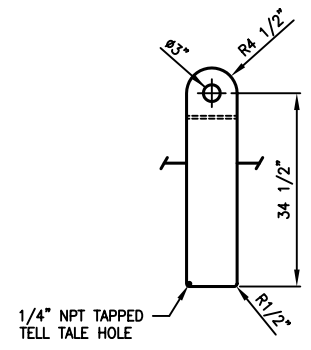
STIFFENING RING #3 DETAIL
(1 REQ'D)



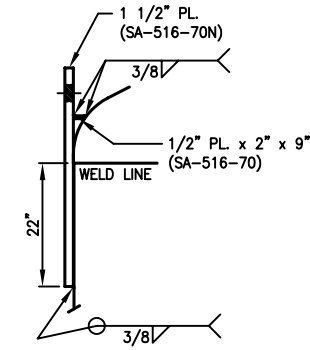
INSULATION SUPPORT DETAIL
(1 REQ'D)



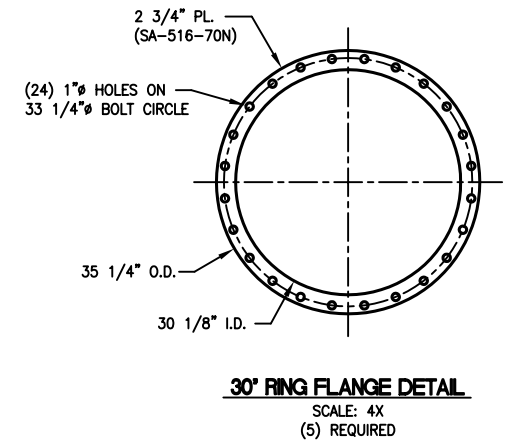
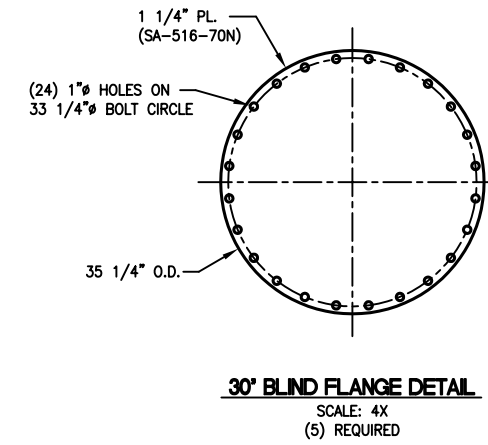
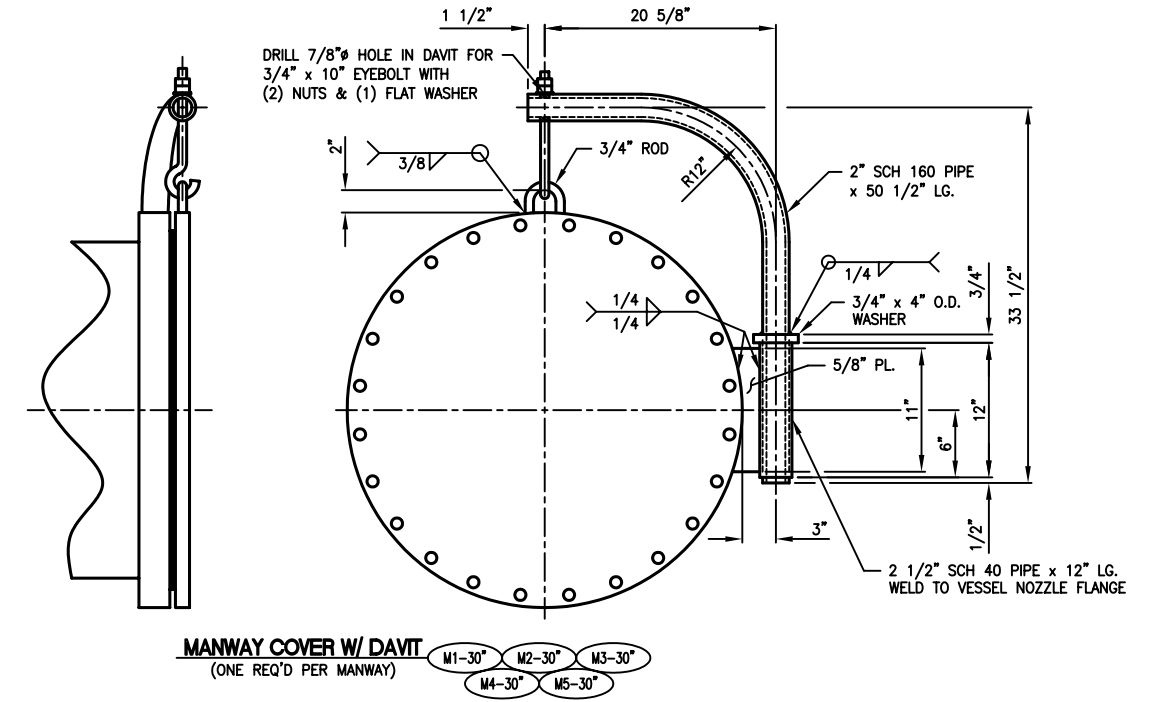
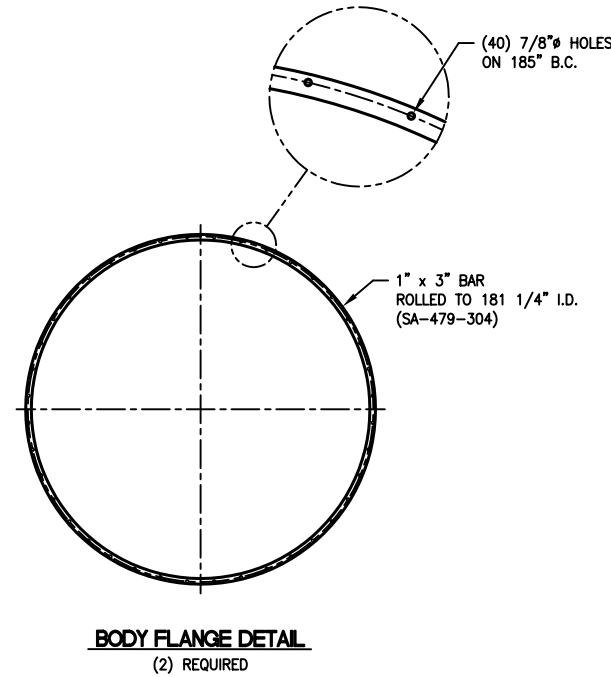
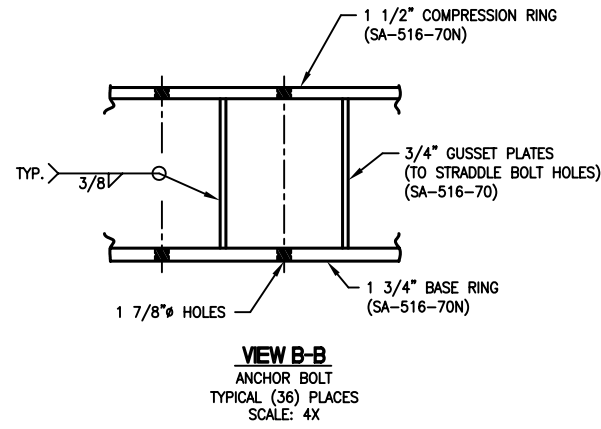
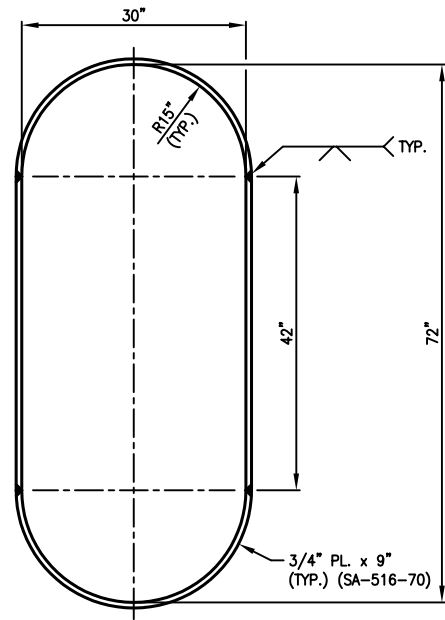
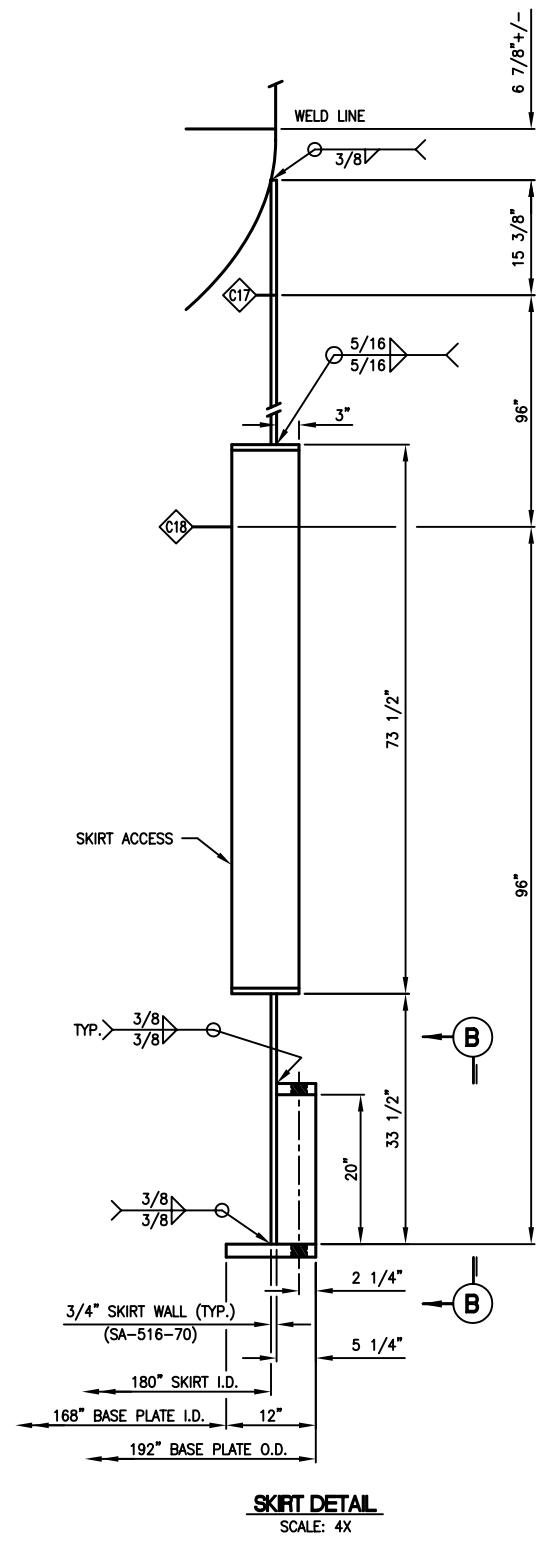
SKIRT ORIENTATION VIEW

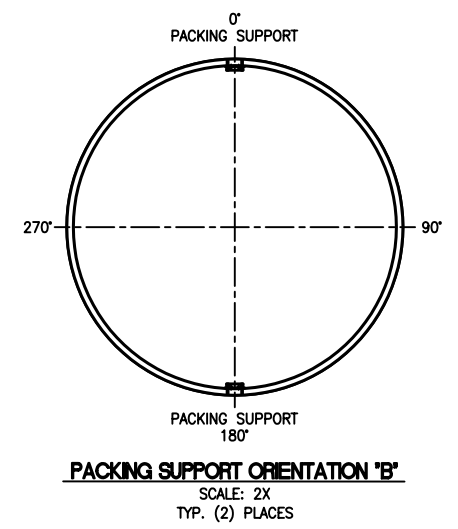
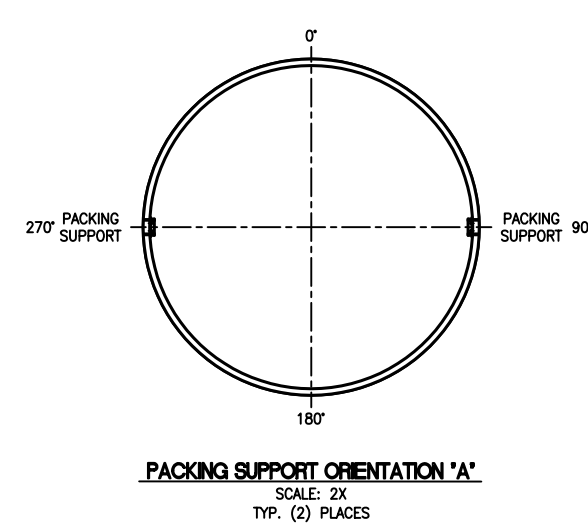
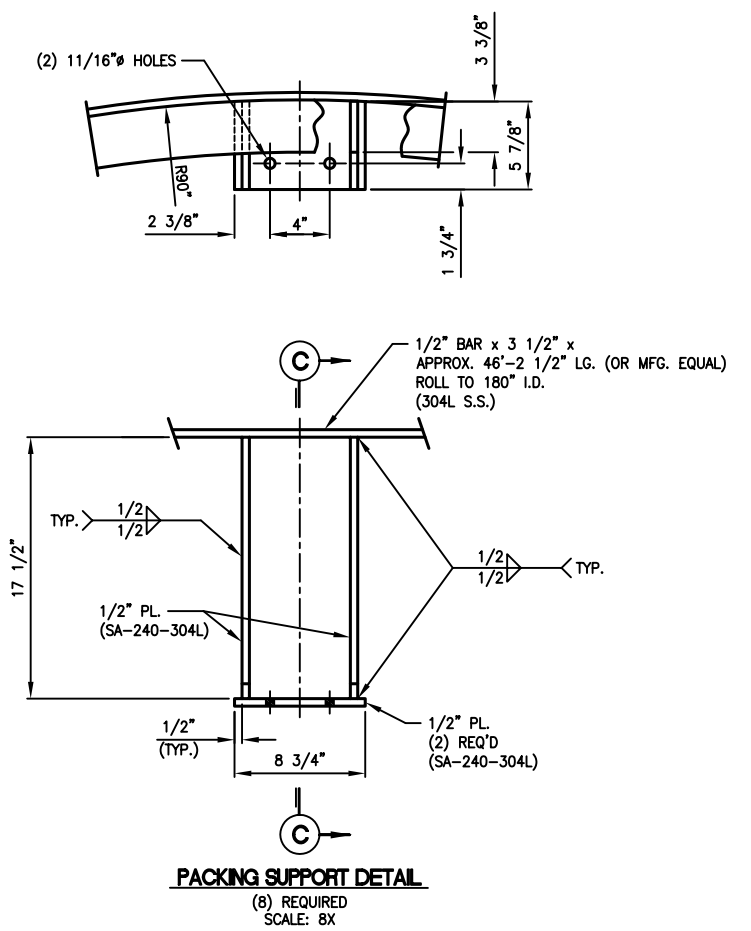
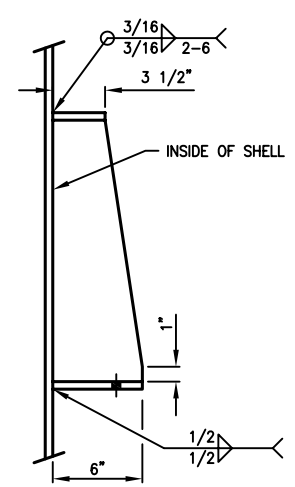
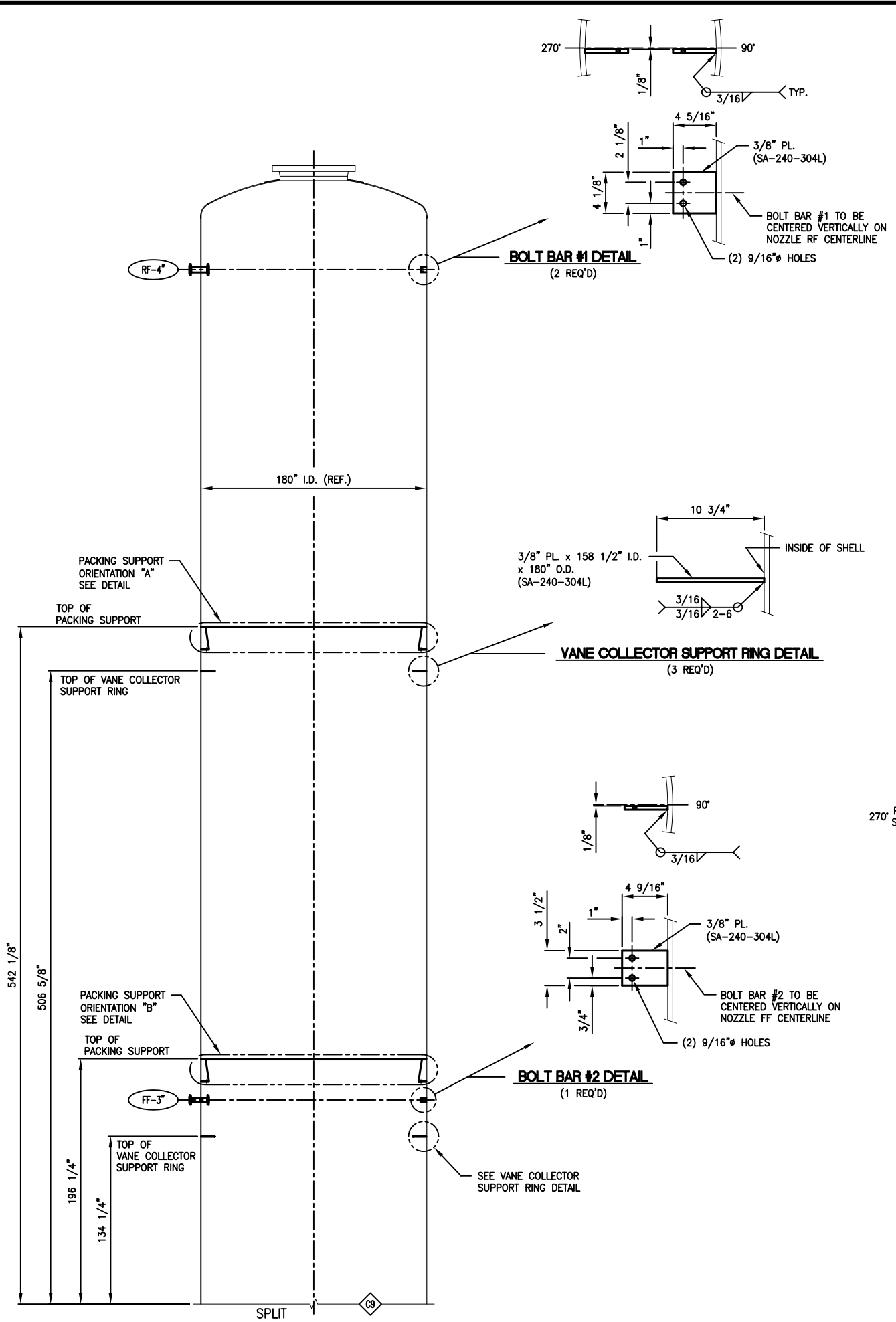


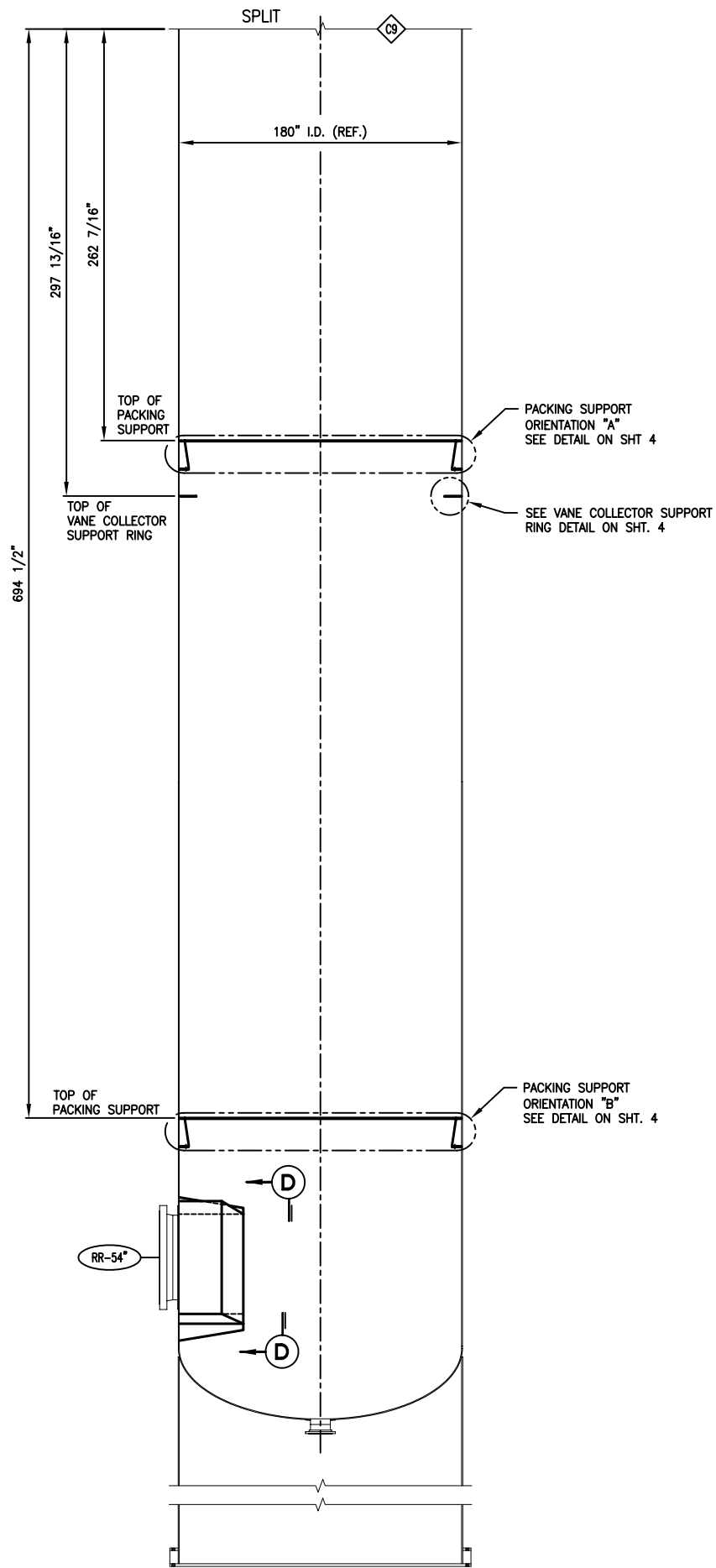
LIFT LUG #1 DETAIL
SCALE: 3X
(2) REQUIRED



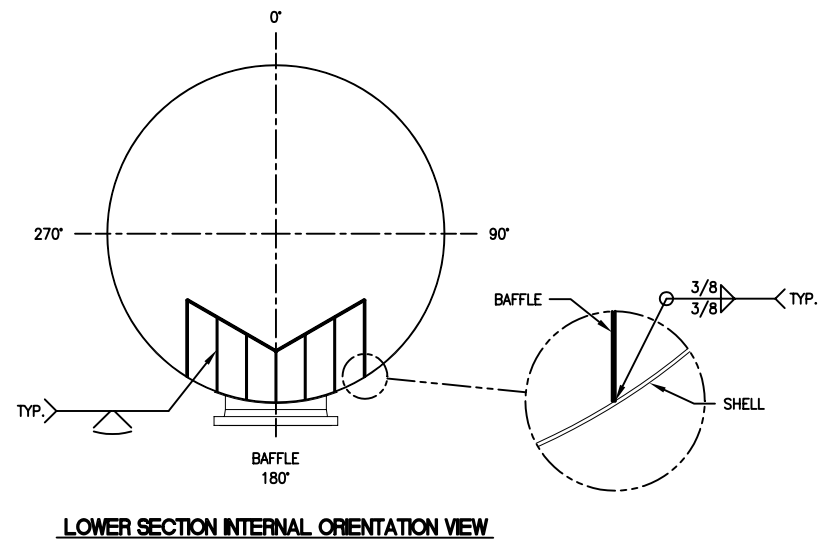
LIFT LUG #2 DETAIL
SCALE: 4X
(6) REQUIRED



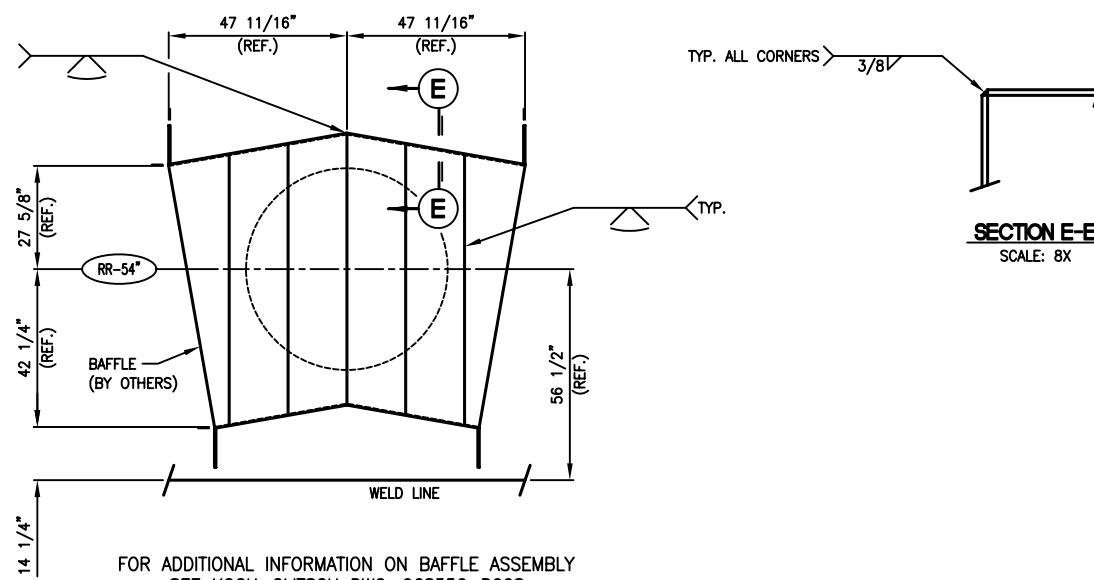




LOWER SECTION INTERNAL ELEVATION VIEW



LOWER SECTION INTERNAL ORIENTATION VIEW



FOR ADDITIONAL INFORMATION ON BAFFLE ASSEMBLY
SEE KOCH-GLITSCH DWG. 968556-D008

VIEW D-D
SCALE: 2X

SECTION E-E
SCALE: 8X

SEE DETAILED VIEW OF P2 TO COLUMN ROOF LADDER ON SHEET 7

SEE ROOF PERIMETER HANDRAIL DETAIL ON SHEET 7

SEE DETAILED VIEW OF P1 TO P2 LADDER ON SHEET 8

TOP OF SECOND PLATFORM (P2)

SEE DETAILED VIEW OF ROOF TO P1 LADDER ON SHEET 8

TOP OF LOWER PLATFORM (P1)

61'-4 5/8"

SEE TYPICAL SECTION VIEW OF PLATFORM ON SHEET 7

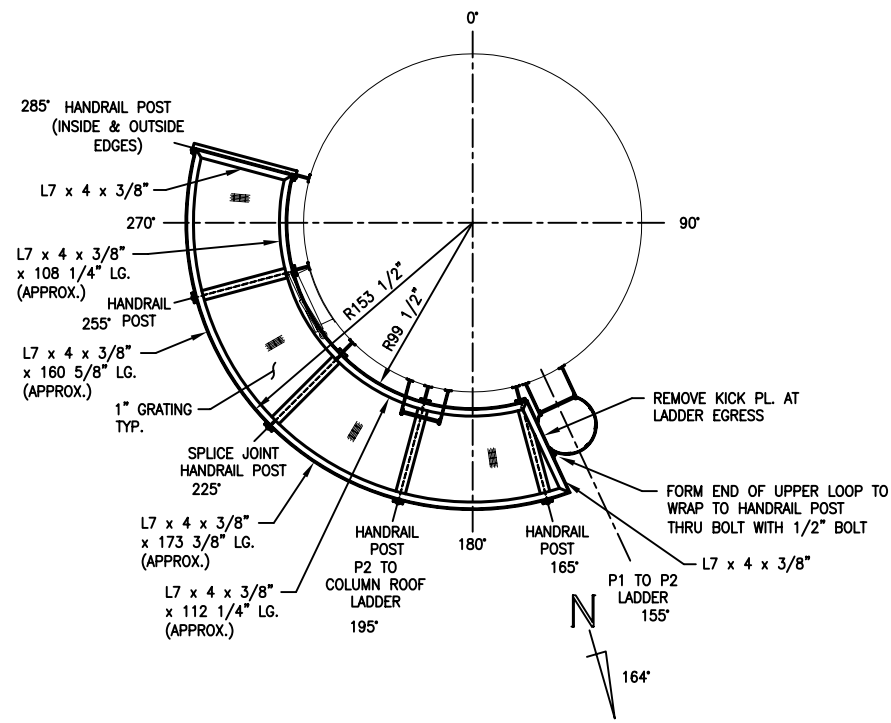
31'-4 5/8"

TOP OF ROOF

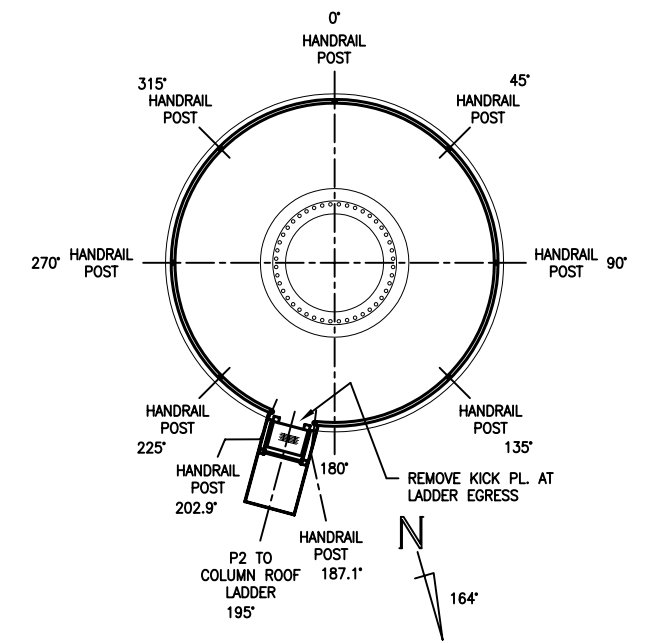
6'-2 7/16" (REF.)

FACE OF BODY FLANGE

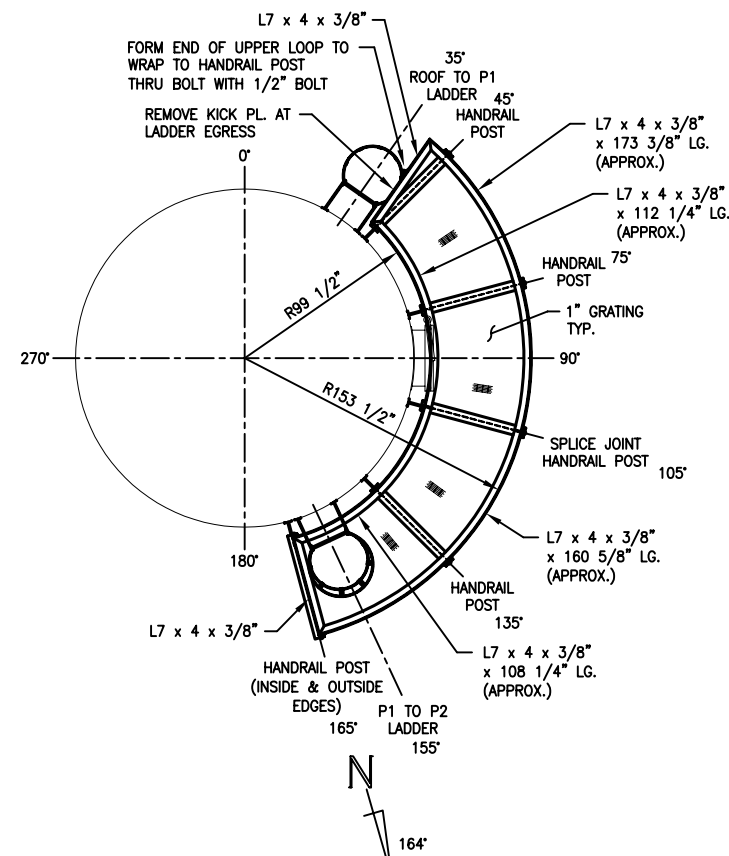
ELEVATION VIEW OF PLATFORMS & LADDERS



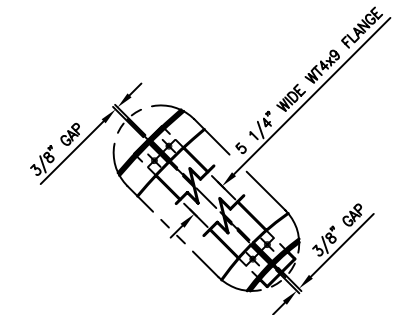
PLAN VIEW AT SECOND PLATFORM (P2)



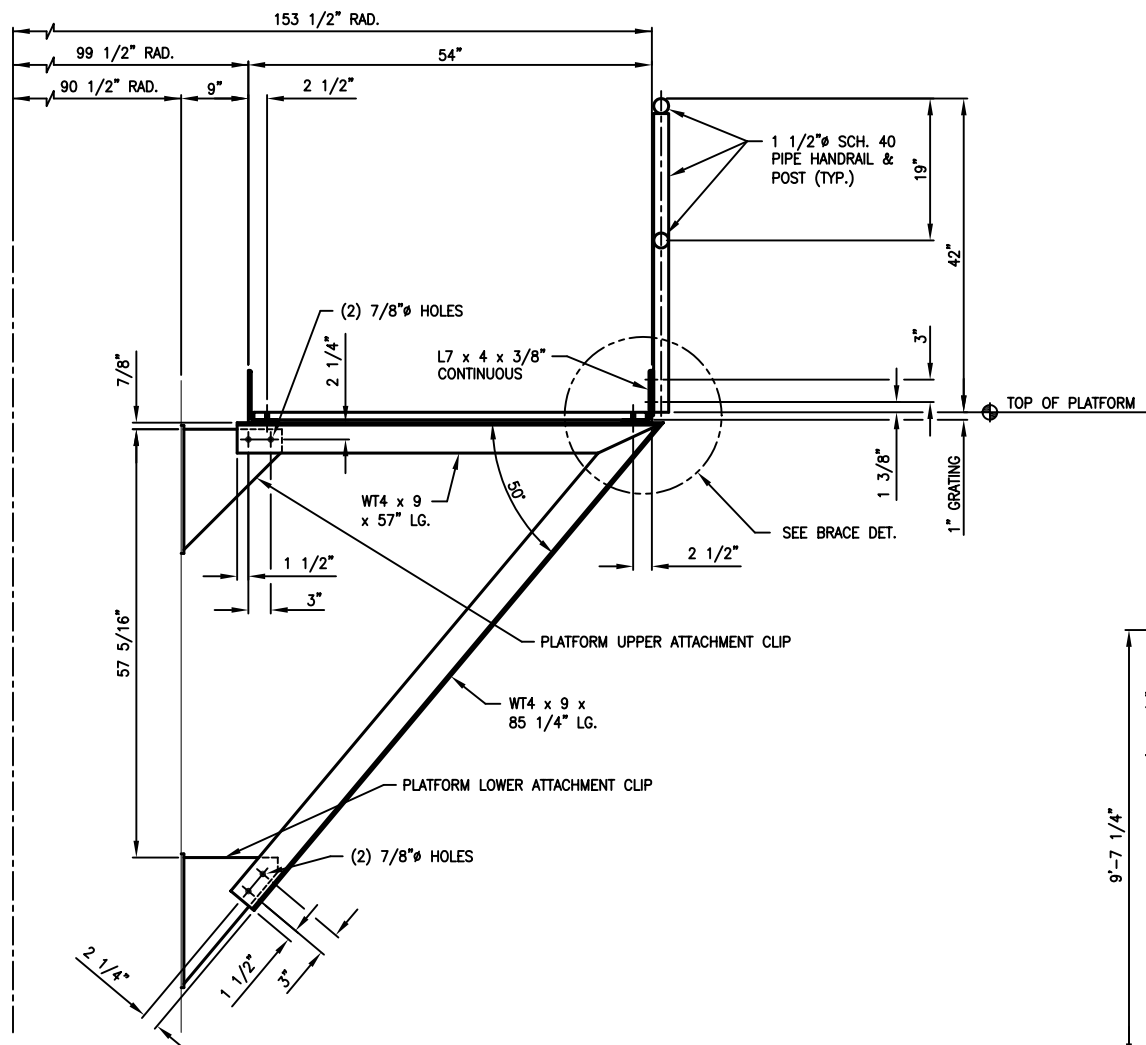
PLAN VIEW AT COLUMN ROOF



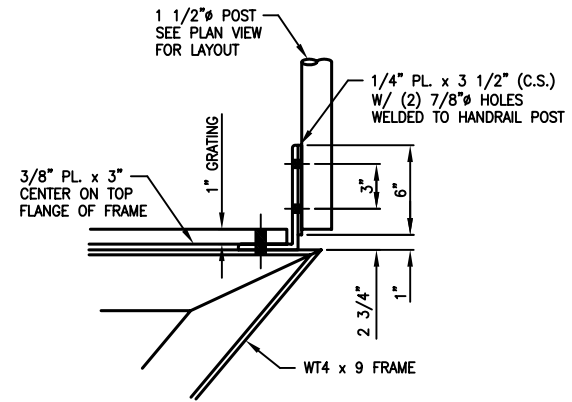
PLAN VIEW AT LOWER PLATFORM (P1)



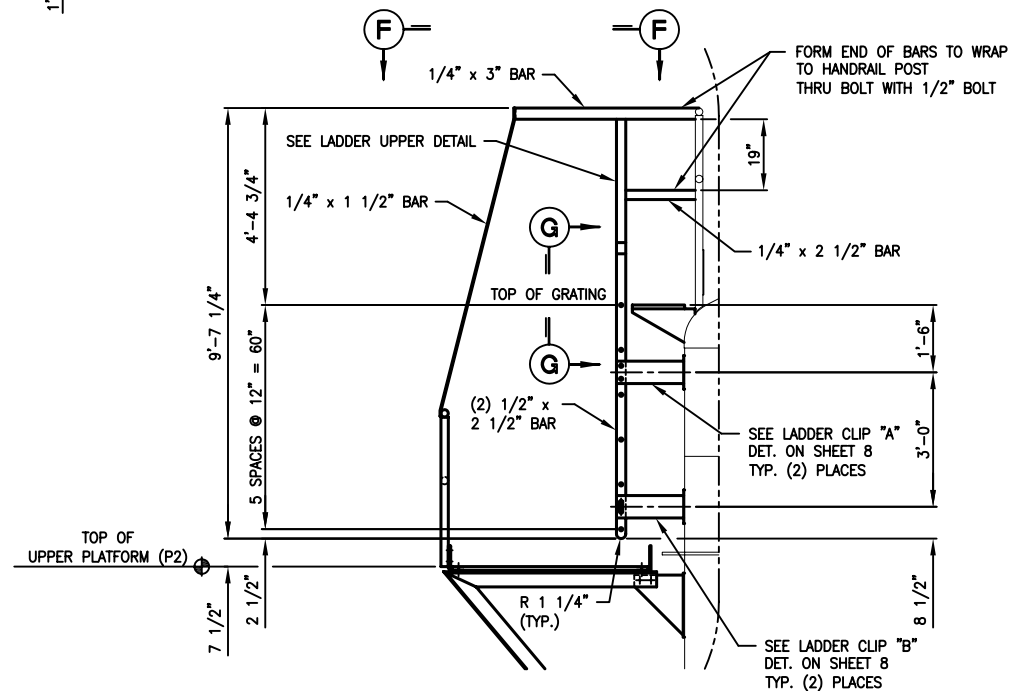
SPLICE JOINT DETAIL



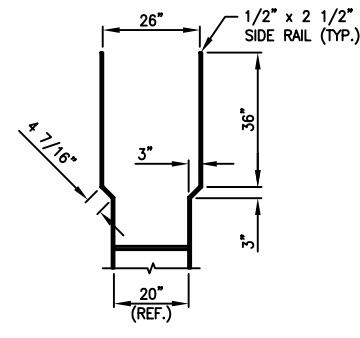
TYPICAL SECTION VIEW OF PLATFORM
SCALE: 4X



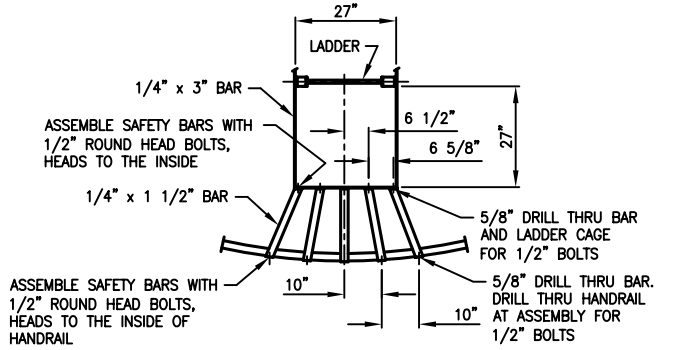
TYPICAL BRACE DETAIL



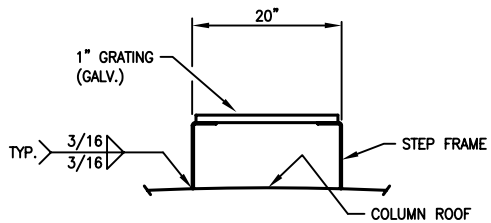
DETAILED VIEW OF P2 TO COLUMN ROOF LADDER
SCALE: 2X



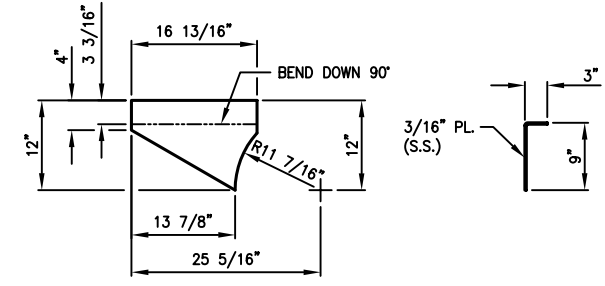
LADDER UPPER DETAIL
SCALE: 2X



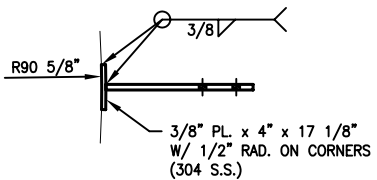
VIEW F-F



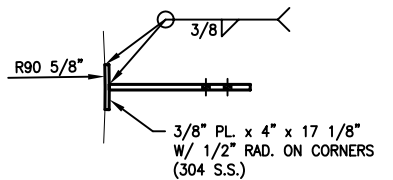
VIEW G-G
SCALE: 4X



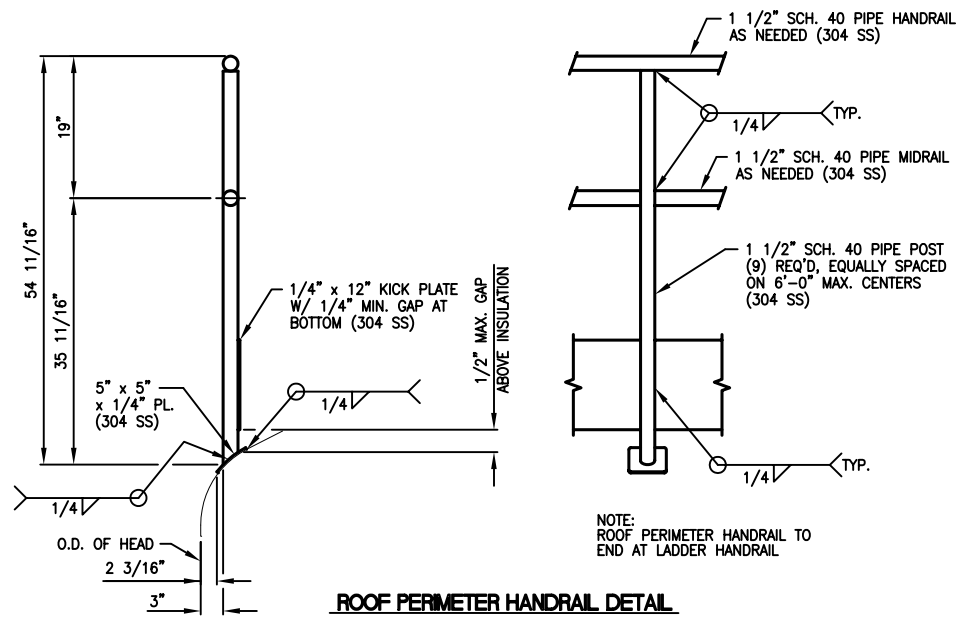
STEP FRAME DETAIL
SCALE: 4X
(1) REQ'D AS SHOWN
(1) REQ'D OPP. HAND



PLATFORM UPPER ATTACH CLIP DETAIL
SCALE: 6X
(10) REQUIRED



PLATFORM LOWER ATTACH CLIP DETAIL
SCALE: 6X
(10) REQUIRED



ROOF PERIMETER HANDRAIL DETAIL
SCALE: 4X

NOTE: ROOF PERIMETER HANDRAIL TO END AT LADDER HANDRAIL

